



信诚通陶机五金
AWA INDUSTRIAL

信诚通机电，让天下没有难买的配件！

Make it easy to find all spare parts of
ceramic industrial



官网



微信二维码



电子画册

抛磨车间
Polishing & squaring workshop

釉线
Glazing line

窑炉
Kiln

压机
Press

原料车间
Raw material workshop

煤气站
Gas station

佛山市信诚通机电有限公司

FSHAN AWA INDUSTRIAL CO.,LTD

公司地址：广东省佛山市禅城区南庄镇季华西路 68 号陶瓷总部基地陶配中心 B 区 305A

Address: B305A, Ceramic Distribution Center, Ceramic Headquarters Base, No.68. Jihua westRoad Foshan, Guangdong, China

仓库地址：广东省佛山市禅城区南庄镇南三新村仓库东侧 1 号厂房

Warehouse add : No.1 East Nansan New Village Nanzhuang Town Chancheng Foshan, Guangdong, China

(E-mail): sales1@foshan-awa.com

(Website): http://www.fsawa.com

(Tel): +86-139 2456 1709 +86-139 2598 8187 +86-186 8821 3122

陶瓷机械及配件一站式服务商

A ONE-STOP SERVICE PROVIDER FOR CERAMIC
MACHINERY AND ACCESSORIES

佛山市信诚通机电有限公司

FOSHAN AWA INDUSTRIAL CO.,LTD

FOUND
始创 二十世纪初
EARLY 20TH CENTURY



信诚通机电，让天下没有难买的配件！

Make it easy to find all spare parts of ceramic industrial



About us

关于信诚通



客户分布图
Customer Distribution Map

佛山市信诚通机电有限公司成立于2011年，公司位于中国陶瓷之都--佛山，公司专业供应陶瓷机械设备和整厂配件，产品种类齐全，质量可靠，服务周到。

本公司致力于陶瓷配件行业多年，拥有一支高素质，经验丰富的团队，提供从报价，采购，质检，包装，出口发货，售后等一条龙服务。公司还独立拥有超1500平方米的大型仓库，是目前国内实力最雄厚出口型公司之一。客户遍及越南，印度，印尼，马来西亚，土耳其，孟加拉，伊朗，泰国，沙特，巴西，哥伦比亚等国家。

公司秉承“汇聚资源，打造陶机配件的超级平台，让天下没有难买的配件！”的愿景，解决客户买配件难的苦恼，不断打造自身实力，力争成为国内配套最完善，综合实力最雄厚的龙头出口型企业，为客户创造价值。

Foshan AWA industrial Co., Ltd. was founded in 2011, It is located in the ceramics capital of China - Foshan, We specializing in the supply of ceramic mechanical equipment and provide all ceramic machinery accessories with reliable quality and good service.

The company has a number of years engaged in spare parts of ceramic industrial by the composition of the high-quality, experienced technical team, Provide one-stop service from quotation, procurement, quality inspection, packaging, export delivery and after-sales. At the same time, We also has a large warehouse more than 1500 square meters, which is one of the most powerful export companies in China. Our products are mainly exported to Vietnam, India, Indonesia, Malaysia, Turkey, Bangladesh, Iran, Thailand, Saudi Arabia, Brazil, Columbia and other Countries.

Since its establishment, we adhering to "Gather resources, Create a super platform. Make it easy to find all spare parts of ceramic industrial" as the goal, solve the trouble of customers to buy spare parts. We constantly build our own strength, and strive to become "the most complete supporting facilities and the most comprehensive strength of the leading export-oriented enterprises" to create value for customers, return new and old customers trust and expectation.

All spare parts, Just go to Mr. Aiwa, So easy !!!

Look forward to cooperating with you !!!

SPECIALITY TEAM

专业团队

CORPORATE CULTURE

企业文化



M A H O O R



致力为客户创造价值

解决客户买配件难的苦恼

Committed to creating value for customers, solve the trouble of customers to buy spare parts.

企业愿景

CORPORATE VISION

汇聚资源，打造陶机配件的超级平台，
让天下没有难买的配件。

Gather resources, Create a super platform. Make it easy to find all spare parts of ceramic industrial

企业使命

CORPORATE MISSION

做一家有良心，有温度，有实力的企业。
成就他人，实现自我。

Be a conscientious, warm, and capable enterprise. Achieve others and realize oneself.

企业价值观

CORPORATE VALUES

合力共生，互利共赢，诚信通天下。

Coexistence through joint efforts, mutual benefit and win-win situation, integrity and global cooperation.

抛光磨边打包配件 Polishing, squaring and packing spare parts



抛光磨头
Polishing head



磨头座
Head base



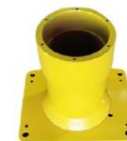
防水罩
Waterproof cover



上部总成
Head upper section assembly



大带轮
Big belt wheel



轴承座
Bearing base



凸轮
Cam



轴
Shaft



旋转轴套
Shaft sleeve



主轴
Main shaft



传动套组件
Drive sleeve assembly



进水法兰管
Water inlet flange pipe



压盖
Press cover



从动齿轮
Driven gear



主动齿轮
Drive gear



中间齿轮
Mid gear



连接套
Connecting sleeve



固定筒
Chamber



小带轮
Small belt wheel



打蜡盘
Waxing dish



联轴器
Shaft coupling



摆杆轴
Swing rod shaft



中间轴
Middle shaft



轴承座套
Bearing base sleeve



固定盖
Fixing cover



主动摆杆
Drive swing rod



被动摆杆
Driven swing rod



磨块座
Abrasive base



碳刷组件
Carbon brush assembly



吸水辊棒
Sponge roller



陶瓷底板
Ceramic plate



上端盖
Upper end cover



推砖装置
Tile push device



主传动装置
Main drive device



齿轮
Gear



磨边头
Squaring head



干磨电机总成
Dry squaring motor assembly



倒角头
Chamfering head



下活动轮装置
Lower movable wheel assembly



托轮装置
Riding wheel assembly



同步带轮
Timing belt wheel



上倒角
Upper chamfering head



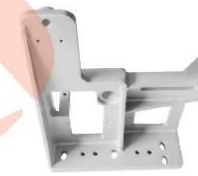
下倒角
Lower chamfering head



翻板总成
Tilting plate assembly



传动支承座
Support base



支承板
Support base plate



陶瓷托槽
Ceramic support



磨头轴
Squaring head shaft



支撑座
Support base



调节蜗轮、蜗杆
Adjusting worm rod and wheel



连接套、齿轮
Connecting sleeve and gear



砂轮夹盘
Abrasive wheel adaptor



防尘罩
Dust cover



PU 压轮
PU press wheel

抛光磨边打包配件

Polishing, squaring and packing spare parts



机芯单元
Movement unit



预送带机构
Belt feeding mechanism



捆紧力调节装置
Binding force adjustment device



卡带块垫板
Plate



导板
Guide plate



导板左轨
Left rail of guide plate



中顶刀组合
Knife assembly



顶体
Top plate



卡带块
Cassette block



导板右轨
Right rail of guide plate



导板
Guide plate



带槽
Support



加热片
Heating section



加热片与滑板组合
Welding knife set



加热线
Heated wire



主轴部件
Main shaft assembly



凸轮
Cam



摆动机构
Tilting mechanism

一键开启智能化打包

ONE CLICK ACTIVATION OF INTELLIGENT PACKAGING

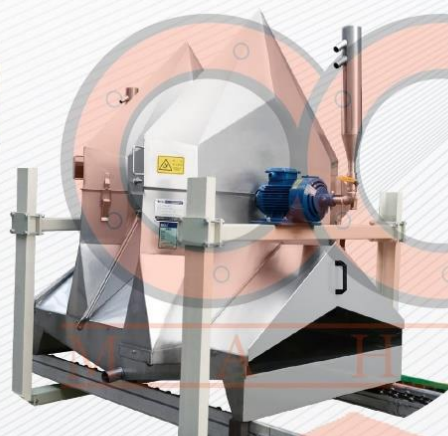


釉线设备及配件

Glazing line machinery and spare parts



圆顶干粒釉柜
Spraying cabin



双峰打点机
Double disc



四立柱吊篮储坯机
Compensator (4-Pillar)



吊篮式储坯机
Compensator



轻型直线淋釉机
Super surface glazing machine



磨刮胶机
Scraper sharpener



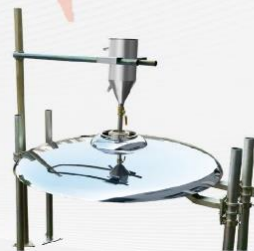
干式磨边机
Edge cleaning machine



大流量水刀式喷釉机主机
Large flow special airless machine



圆振筛
Round vibrating sieve



钟罩淋釉器
Glaze bell



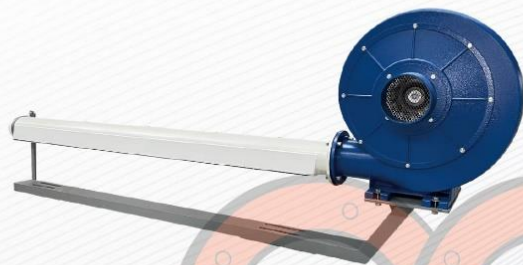
平皮带调头机
PVC belt U-turn machine

釉线设备及配件

Glazing line machinery and spare parts



搅拌抽釉桶
Agitator tank



管式吸尘机
Blowing unit (pipe type)



贴膜机
Medium plate filming machine



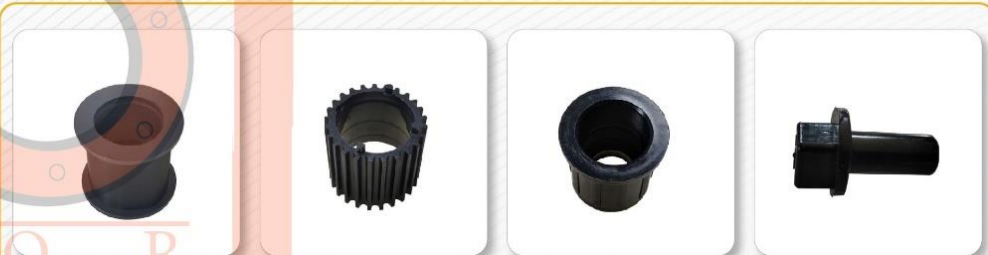
底釉机
Under glaze machine



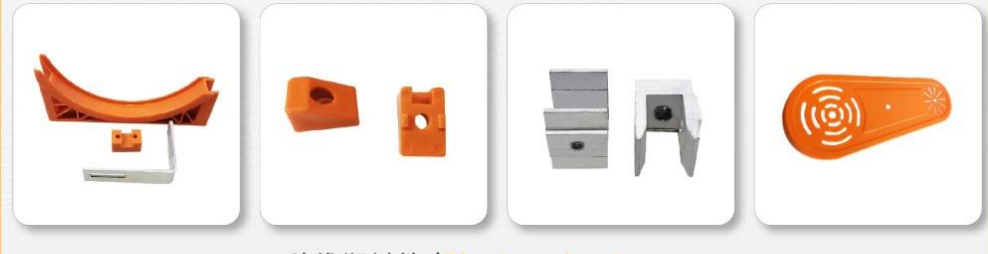
转弯机 (锥棒式)
Curve unit (tapered roller)



皮带轮 / Pulley



辊棒配件 / Spare parts for the roller



釉线塑料件 / Glazing plastic parts

喷墨印花机配件

Inkjet printing machine spare parts



墨泵 & 循环泵
Ink pump and circulating pump

M A H G O R



过滤器 / Filter



喷头 / Inkjet head



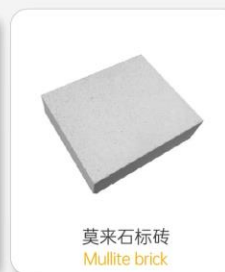
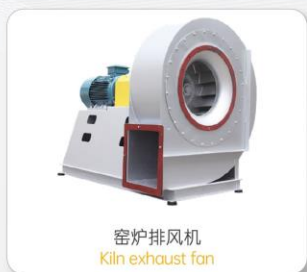
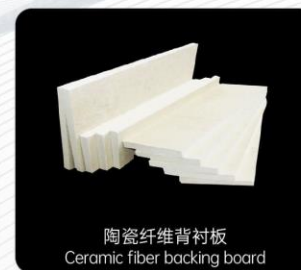
板卡 / Card

磨具

Tools



窑炉系统配件 Kiln system spare parts



窑炉系统配件 Kiln system spare parts



陶瓷辊棒
Ceramic roller



碳化硅滚棒
Silicon carbide roller



调压阀
Pressure regulating valve



执行器 + 阀门
Actuator and valve



电动执行器
Actuator



铝蝶阀
Aluminum valve



碳化硅方管
Silicon carbide beam



碳化硅冷风管
Silicon carbide cooling pipe



电磁阀
Solenoid valve



点火器
Igniter



双金属温度计
Bimetallic thermometer



热电偶
Thermocouple



碳化硅烧嘴
Silicon carbide burner



喷枪
Spray gun



电极
Electrode



烧嘴旋风片
Burner cyclone



压力变送器
Pressure sensor



压力变送器
Pressure sensor



双金属温度计
Bimetallic thermometer



压力表
Pressure gauge



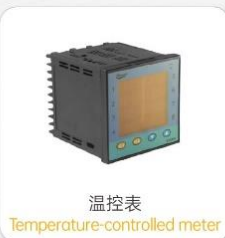
控制器
Controller



点火器
Igniter



温控表
Temperature-controlled meter



温控表
Temperature-controlled meter



传感器
Sensor



电接点压力表
Electric-contact pressure gauge



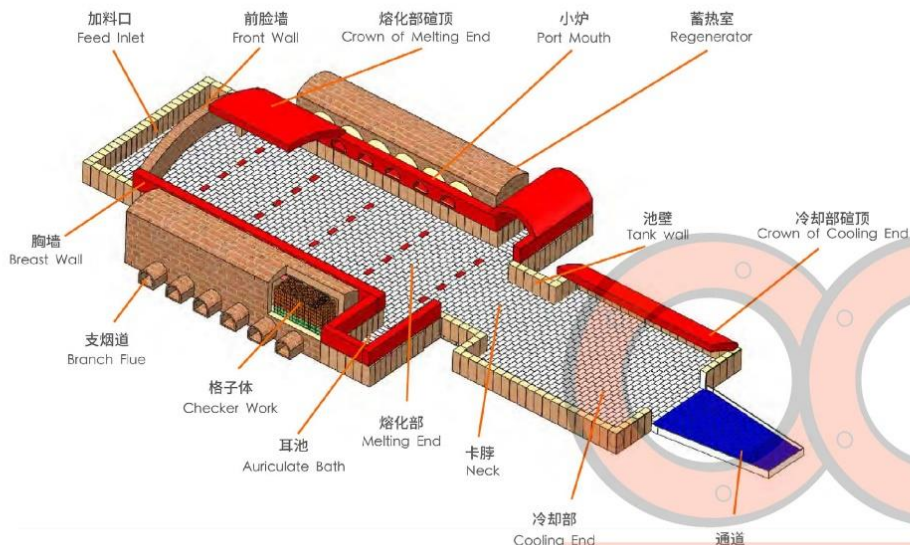
接近开关
Proximity switch



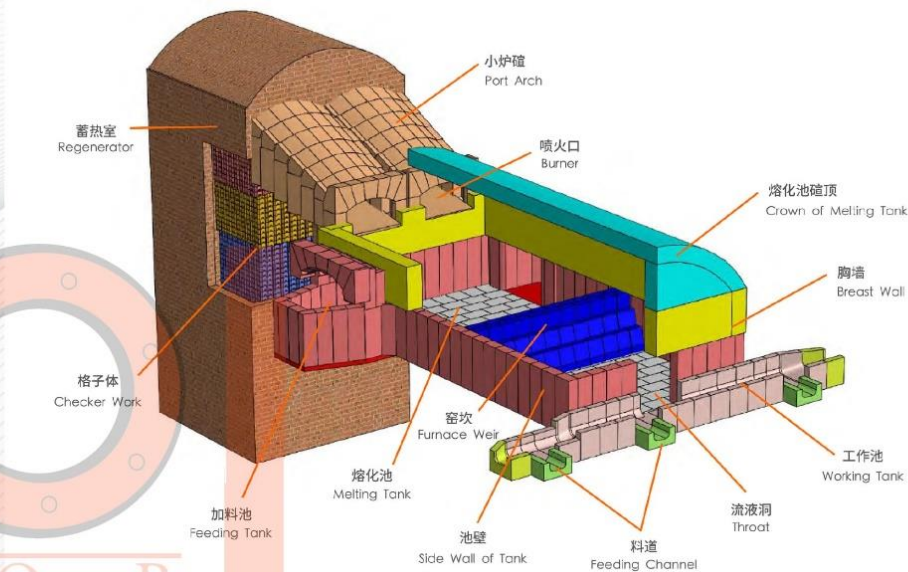
开关
Switch

耐火材料

Refractories



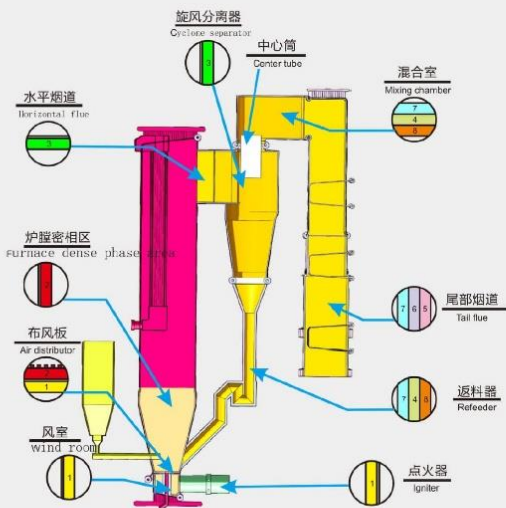
浮法玻璃窑炉
Float Glass Furnace



马蹄焰窑
Horseshoe Fire Kiln

M A H O O R

CFB 锅统耐火材料配示图 / Refractories conformation scheme for cfb boiler



- 1 抗热震浇注料 / 可塑料
Thermal shock castables / plastic refractories
- 2 耐磨耐火浇注料 / 可塑料
Wear-resistant castables / plastic refractories
- 3 钢纤维耐磨浇注料
Steel fiber reinforced wear-resistant castables
- 4 轻质保温浇注料
Light weight insulating castables
- 5 粘土砖
Fireclay Bricks
- 6 硅藻土保温砖
Diatomite insulating bricks
- 7 硅酸铝纤维毯
Aluminum silicate fiber blanket
- 8 高铝耐磨浇注料
High alumina wear-resistant castables



压机配件

Press spare parts



板式换热器
Plate heat exchanger



M A H O O



布料机
Secondary fabric machine



泵
pump



插装阀
Cartridge valve



顶出装置
Ejector



压力变送器
Pressure sensor



位移传感器
Displacement sensor



蓄能器及胶囊
Accumulator



压机密封圈
Seal



键盘
Keyboard



液压阀
Hydraulic valve



比例阀
Proportional valve



主油泵
Main oil pump



穆格阀
Moog valve



放大器
Amplifier



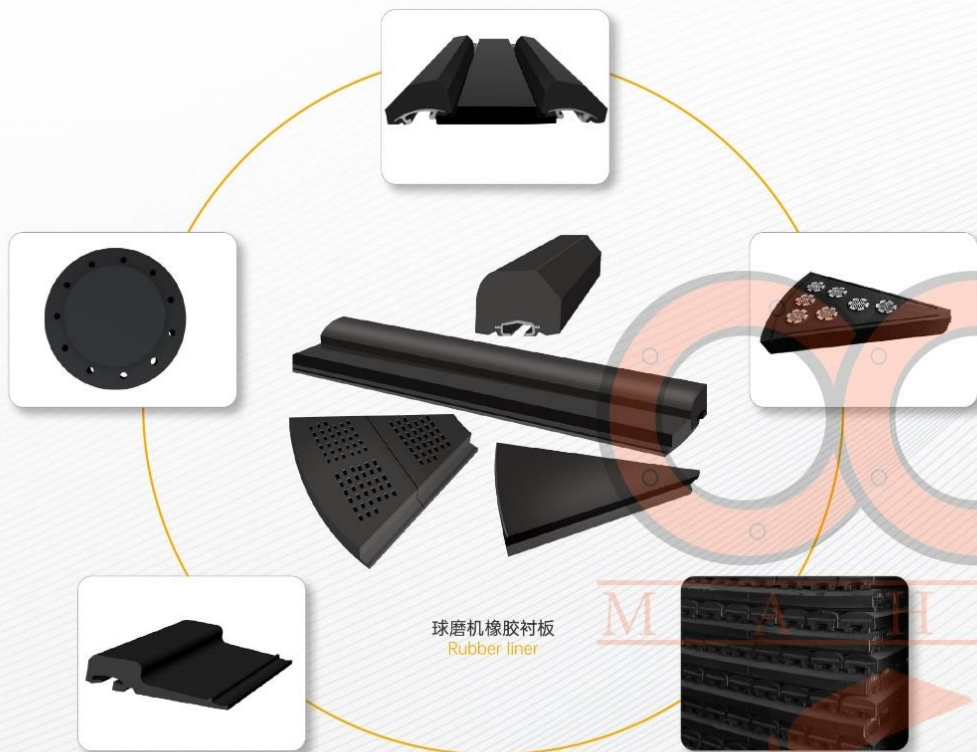
减速机
Reducer



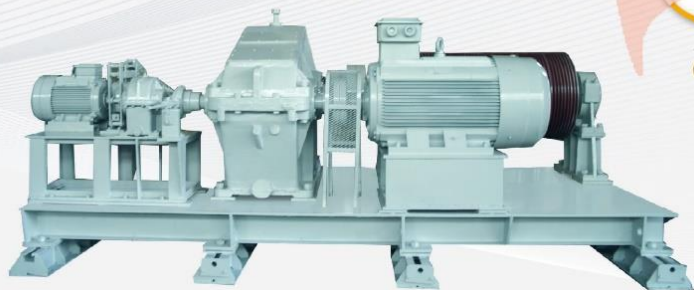
滤芯
Filter element

原料车间

Raw material workshop



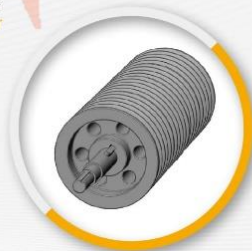
球磨机橡胶衬板
Rubber liner



球磨机主动主机
Main transmission device of ball mill



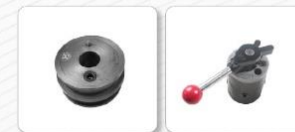
偶合器
Coupler



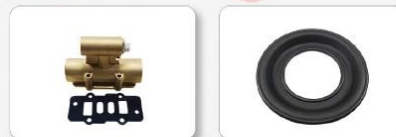
皮带轮
Pulley



柱塞泵
Piston pump



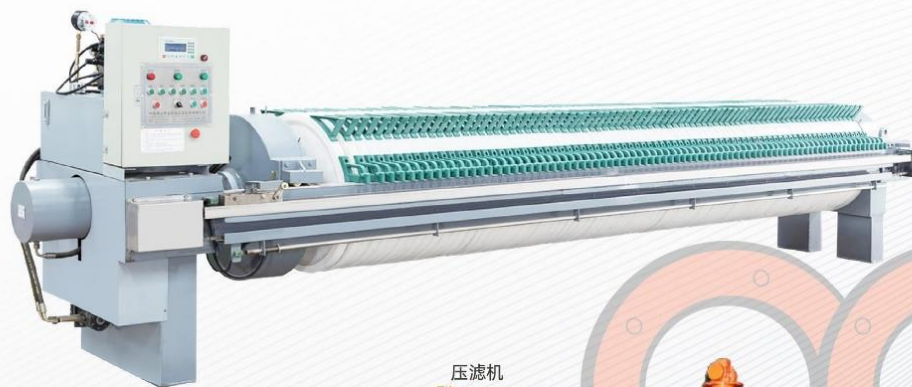
柱塞泵配件
Spare parts for piston pump



隔膜泵配件
Spare parts for pump



隔膜泵
Diaphragm pump



压滤机
Filter press



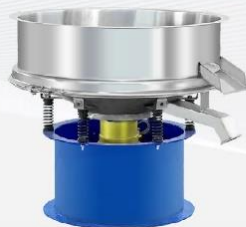
高压泵
High pressure pump



电磁除铁机
Electromagnetic iron remover



永磁除铁机
Permanent magnet iron remover



振动筛
Vibrating screen



立式泵 / Vertical pump



搅拌机 / Mixer



喂料机 / Feeder



喂料机配件
Spare parts for feeder

煤气站配件 Gas station spare parts



炉箅
Grate



探火阀
Checking fire valve



油缸
Oil cylinder



气动蝶阀
Pneumatic butterfly valve



气动法兰球阀
Pneumatic flange ball valve



四氟蝶阀
Butterfly valve



截止阀
Globe valve



两片式球阀
Two-piece ball valve



蜗轮蝶阀
Worm wheel butterfly valve



高压硅整流设备
High voltage silicon rectifier equipment



高压硅整流控制柜
High voltage silicon rectifier control cabinet



电瓷瓶
Porcelain insulator



绝缘瓷套
Insulating porcelain sleeve



标准件 / Standard parts



变频器 / Inverter



空气开关 / Air switch



电流表 / Ammeter



减速机 / Reducer



油封 / Oil seal



气缸电磁阀 / Cylinder and solenoid valve



电机 / Motors



轴承 / Bearing

工业皮带

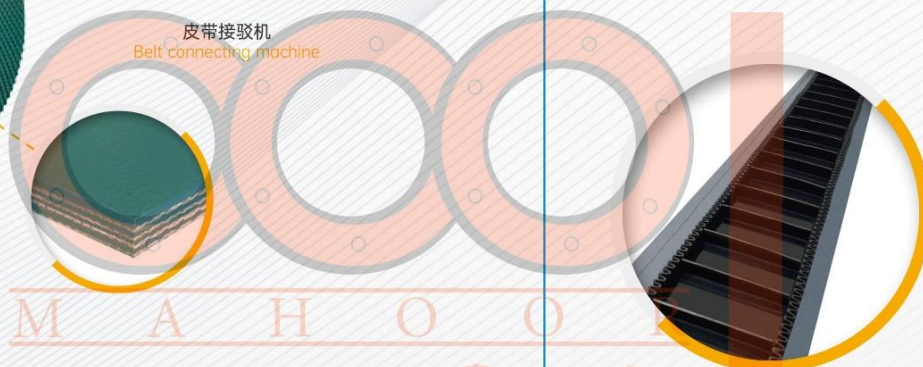
Industrial Belt



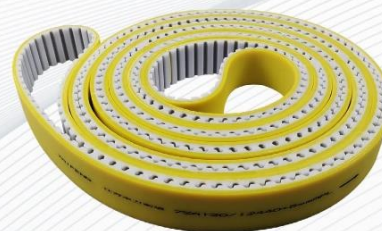
PVC 输送带 / PVC belt



皮带接驳机
Belt connecting machine



PU 皮带 / PU Belt



同步带 / Timing belt



橡胶三角带
Rubber belt

橡胶裙边带
Rubber charging belt

橡胶皮带合集
Rubber belts



高精度 · 耐磨损

HIGH PRECISION AND WEAR RESISTANCE

COOPERATIVE CLIENTS

合作客户



WORK PROCESS

工作流程



01 质量检查
Quality inspection



02 产品拍照
Product photography



03 打包装
Packaging



04 入箱
Inbound



05 封箱
Sealing the box



06 装柜
Loading



07 发货
Send out goods