

# Sheikh Bahaei

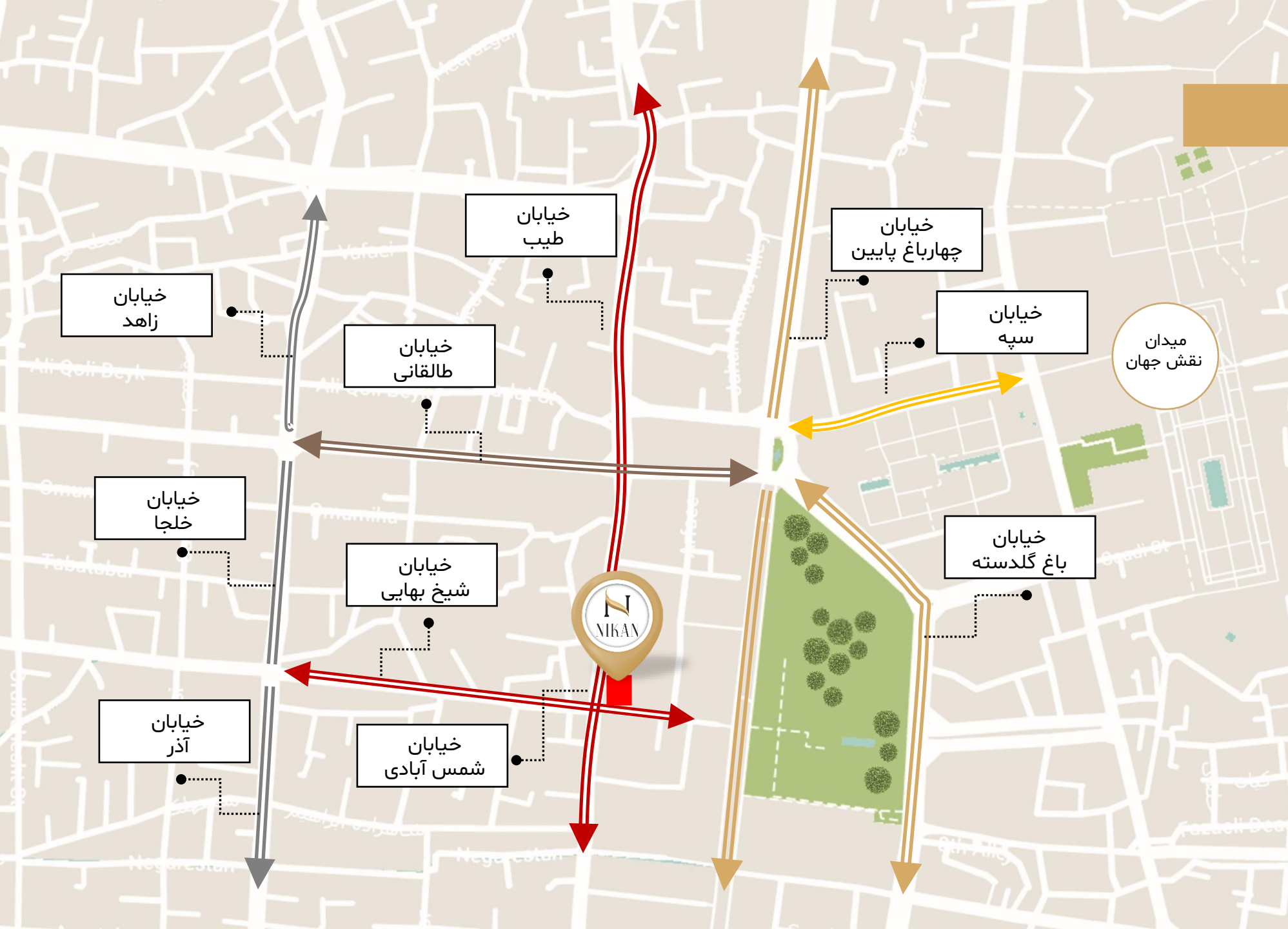
## Commercial Building

- Architect: Eng Masjedi
- Area :4300
- Number of Commercial Units :4
- Number of Administrative Units :12
- Number of Ceilings :9





# لوکیشن







# لوکیشن

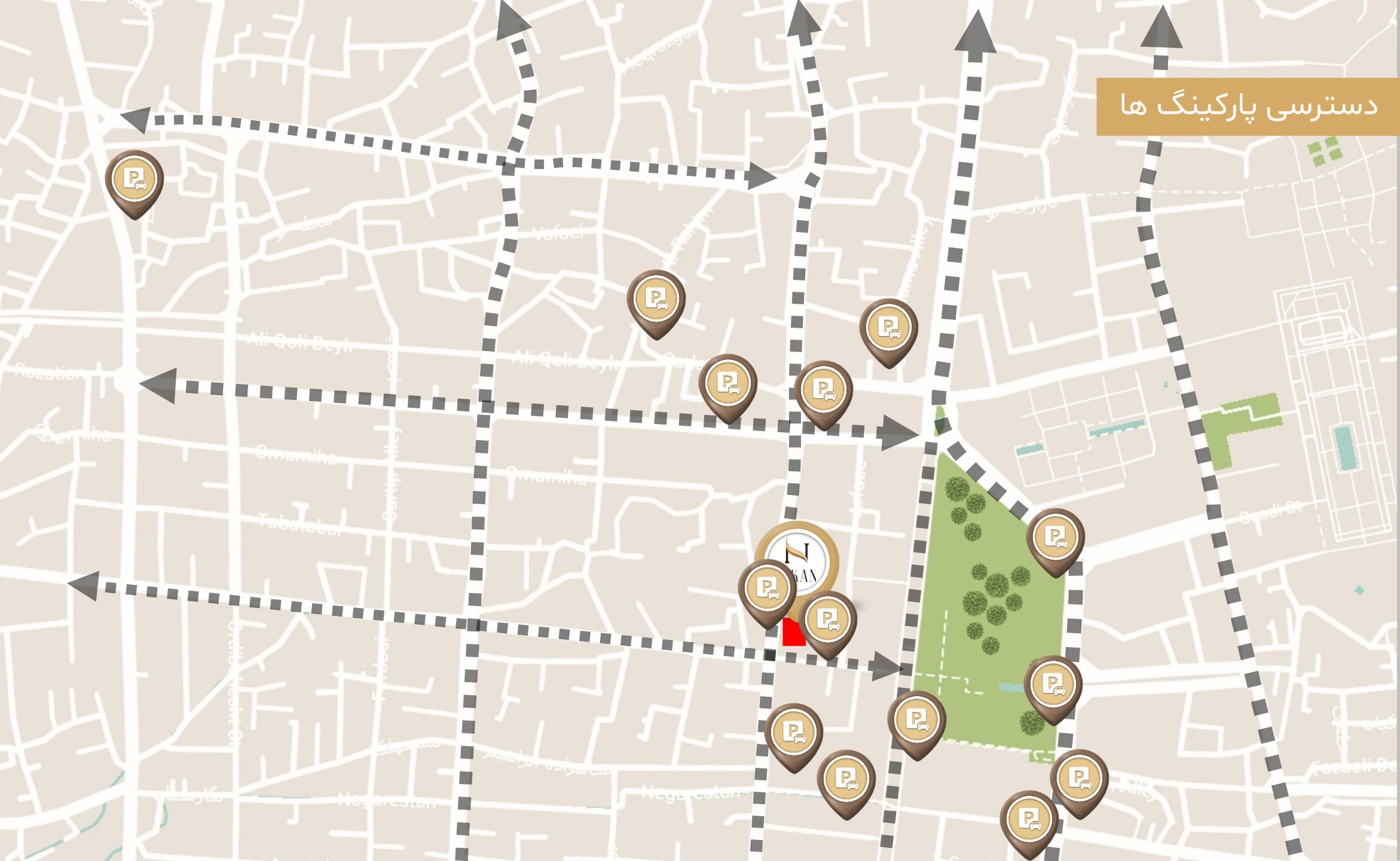
خیابان  
طالقانی

خیابان  
شیخ بهایی

خیابان  
شمس آبادی



# دسترسى پارکینگ ها



# بیمارستان ها





بیمارستان شهید بهشتی

بیمارستان عیسی بن مریم





- Roof
- Level+3
- Level+2
- Level+1
- Semi Floor
- Ground Floor
- Level -1
- Level -2
- Level -3
- Level -4

اداری

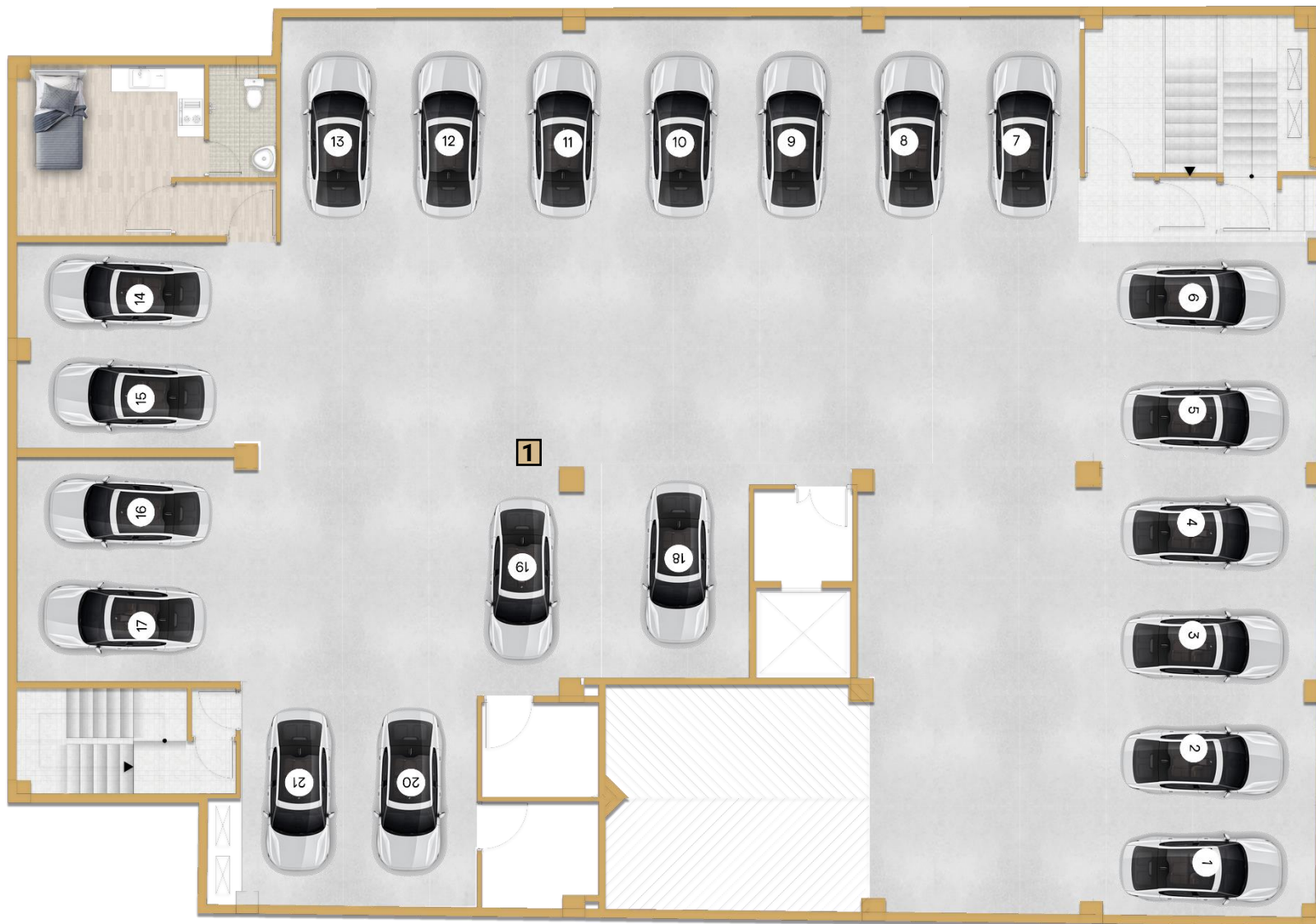
تجاری

پارکینگ


برش

# طبقه ی منفی چهار

## 1. پارکینگ





 Sheykhbahayi  
Residential Complex  
Parking design  
Owner : Eng.Rafizadeh  
Architect : Eng.Masjedi  
3D Artist : M.Mansouri



 Sheykhbahayi  
Residential Complex  
Parking design  
Owner : Eng.Rafizadeh  
Architect : Eng.Masjedi  
3D Artist : M.Mansouri



 Sheykhbahayi  
Residential Complex  
Parking design  
Owner : Eng.Rafizadeh  
Architect : Eng.Masjedi  
3D Artist : M.Mansouri

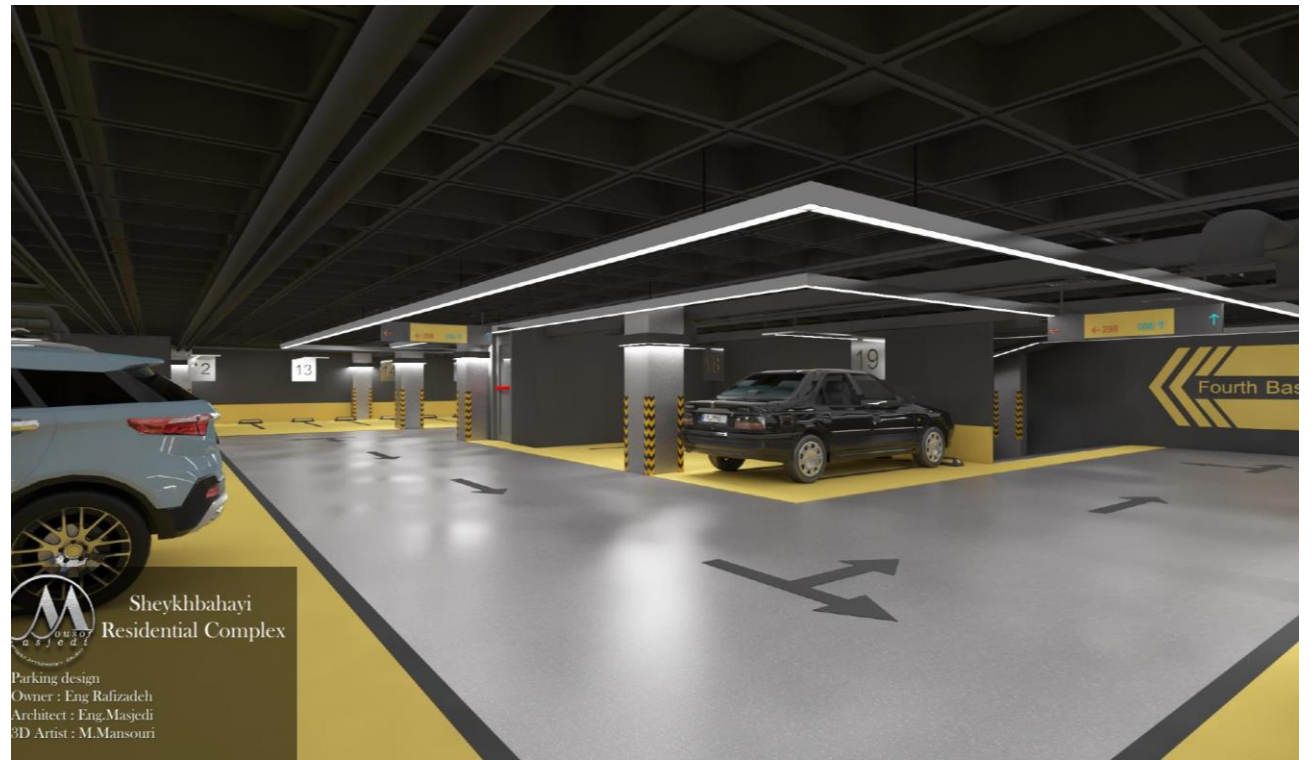
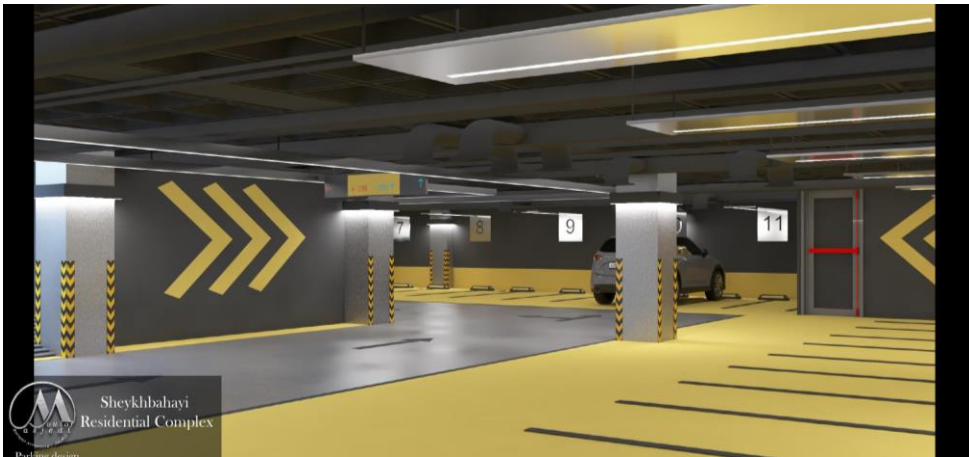
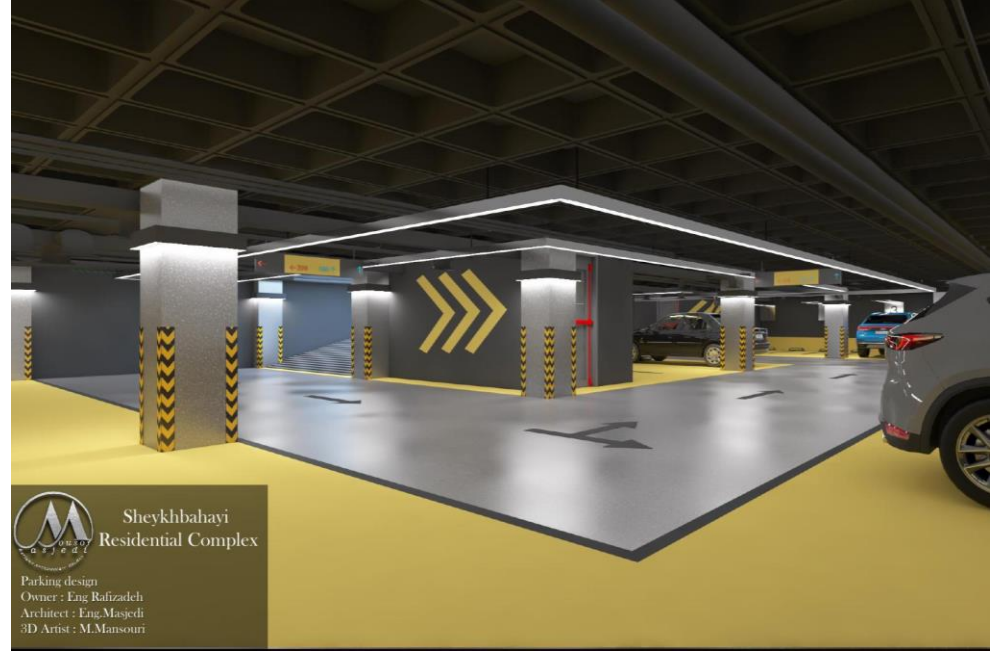


 Sheykhbahayi  
Residential Complex  
Parking design  
Owner : Eng.Rafizadeh  
Architect : Eng.Masjedi  
3D Artist : M.Mansouri

# طبقه ی منفی سه

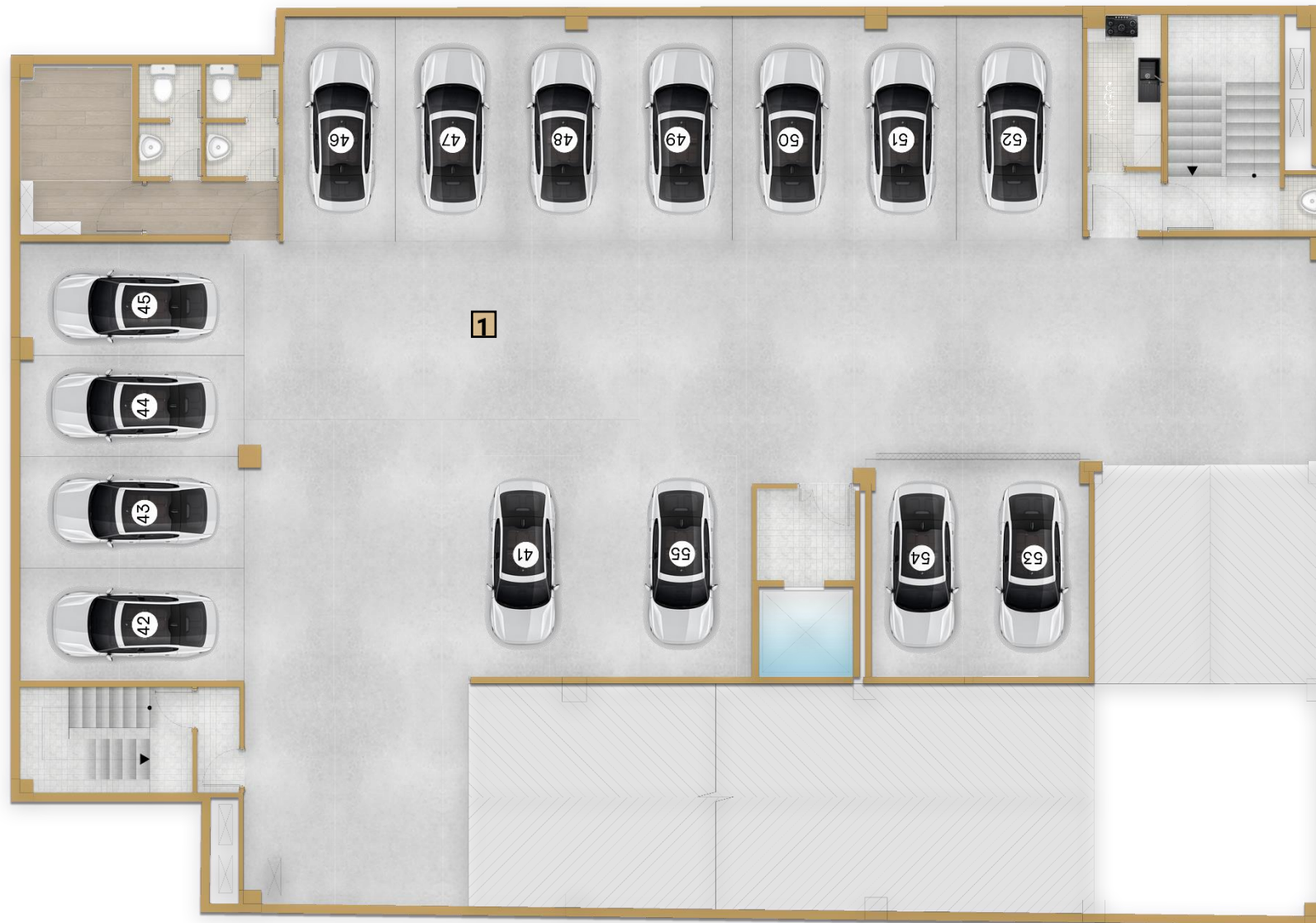
## 1. پارکینگ





# طبقه ی منفی دو

## 1. پارکینگ





**Sheykhbahayi Residential Complex**  
Parking design  
Owner: Eng.Rafizadeh  
Architect: Eng.Masjedi  
3D Artist: M.Mansouri



**Sheykhbahayi Residential Complex**  
Parking design  
Owner: Eng.Rafizadeh  
Architect: Eng.Masjedi  
3D Artist: M.Mansouri



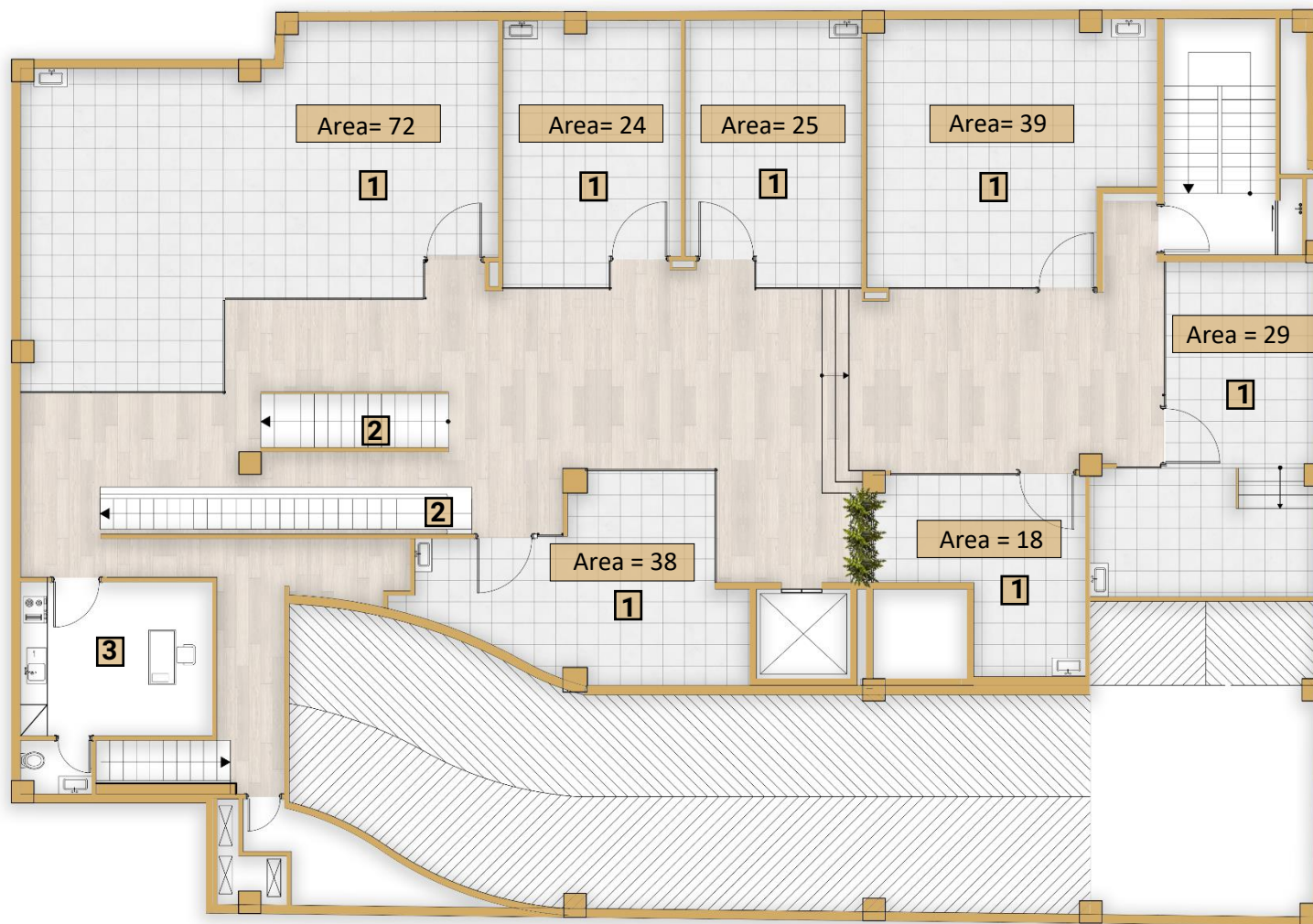
**Sheykhbahayi Residential Complex**  
Parking design  
Owner: Eng.Rafizadeh  
Architect: Eng.Masjedi  
3D Artist: M.Mansouri



**Sheykhbahayi Residential Complex**  
Parking design  
Owner: Eng.Rafizadeh  
Architect: Eng.Masjedi  
3D Artist: M.Mansouri

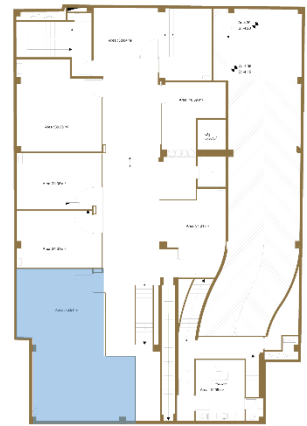
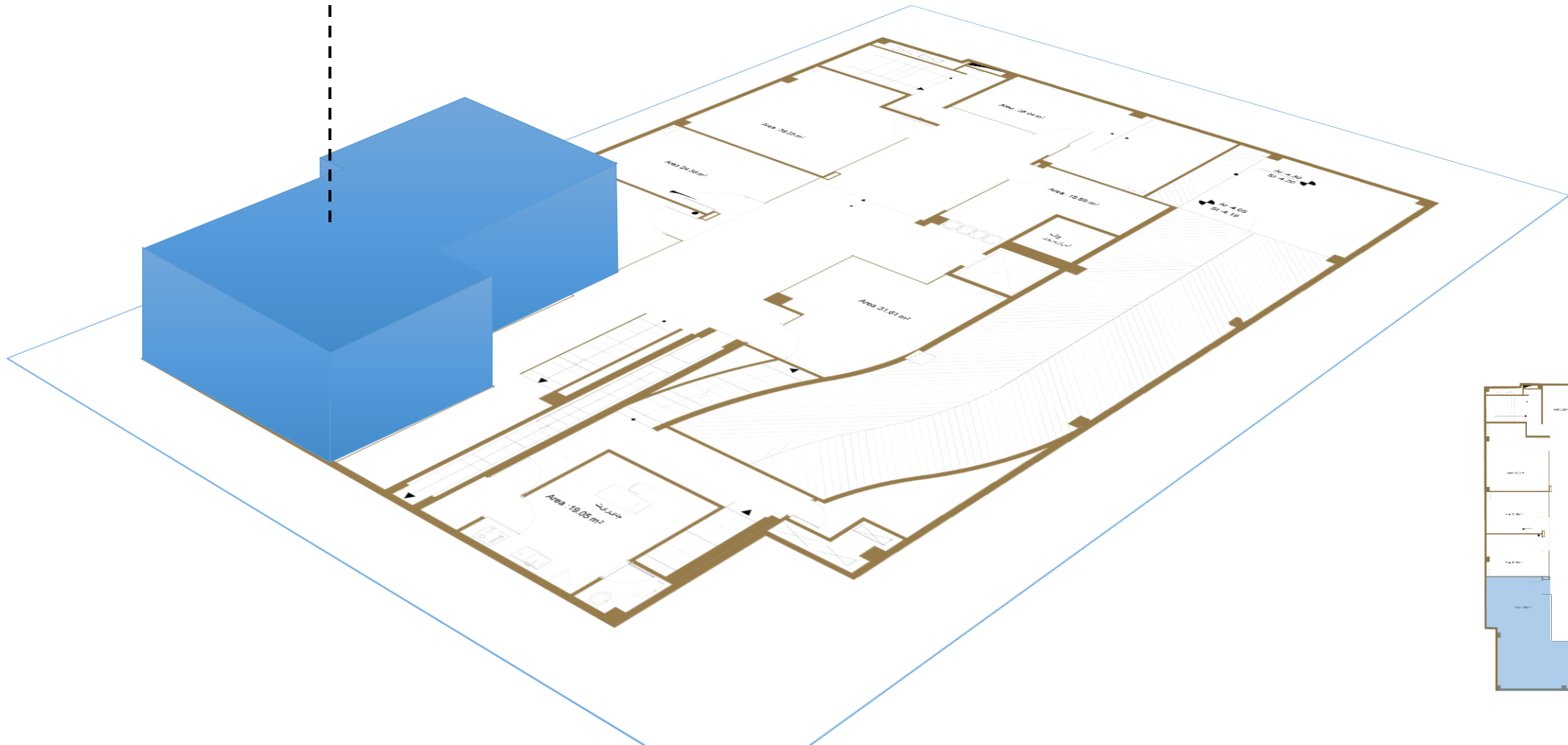


## طبقه ی منفی یک

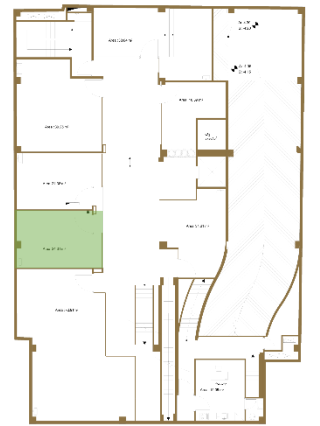
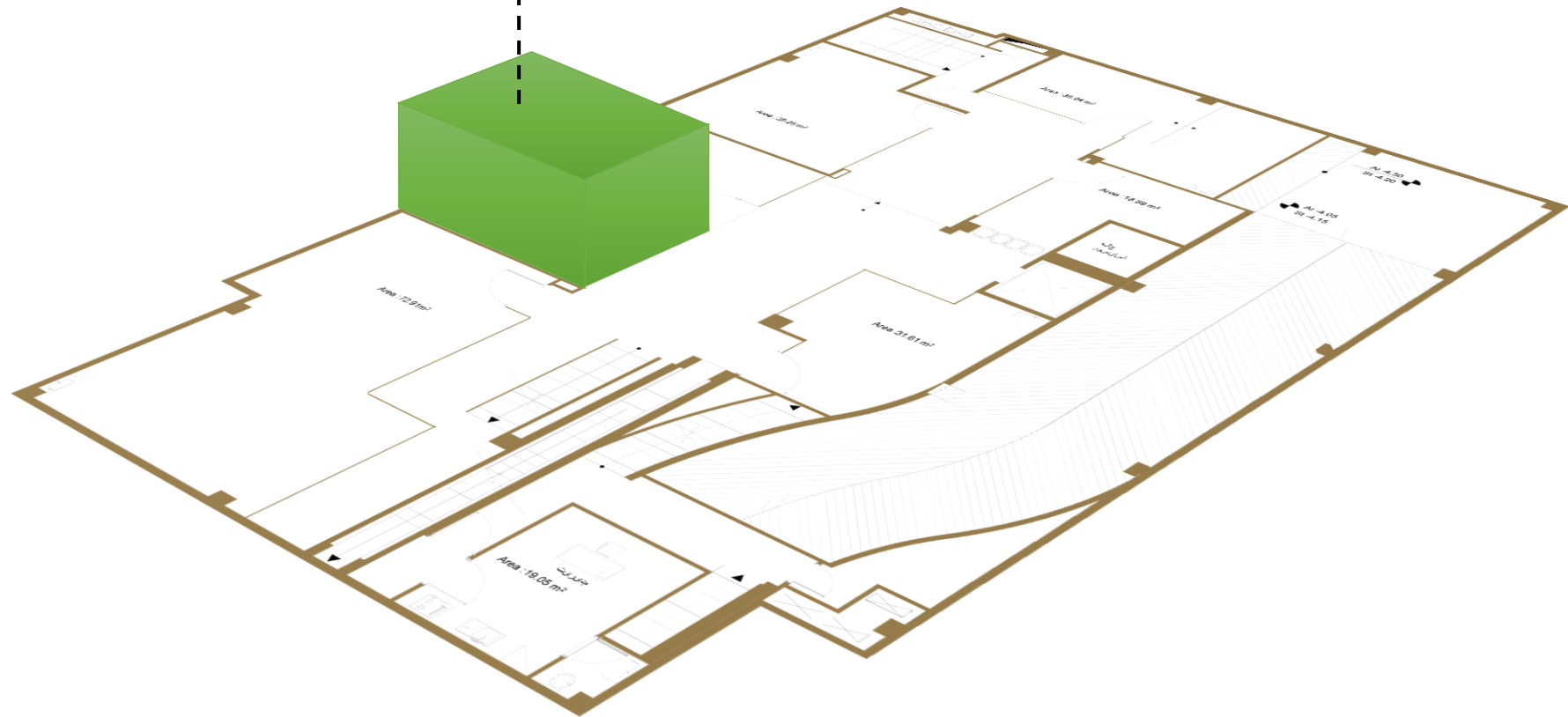


- 1. تجاری
- 2. پله برقی
- 3. اتاق سرویس

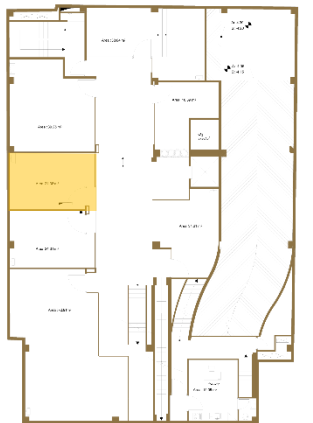
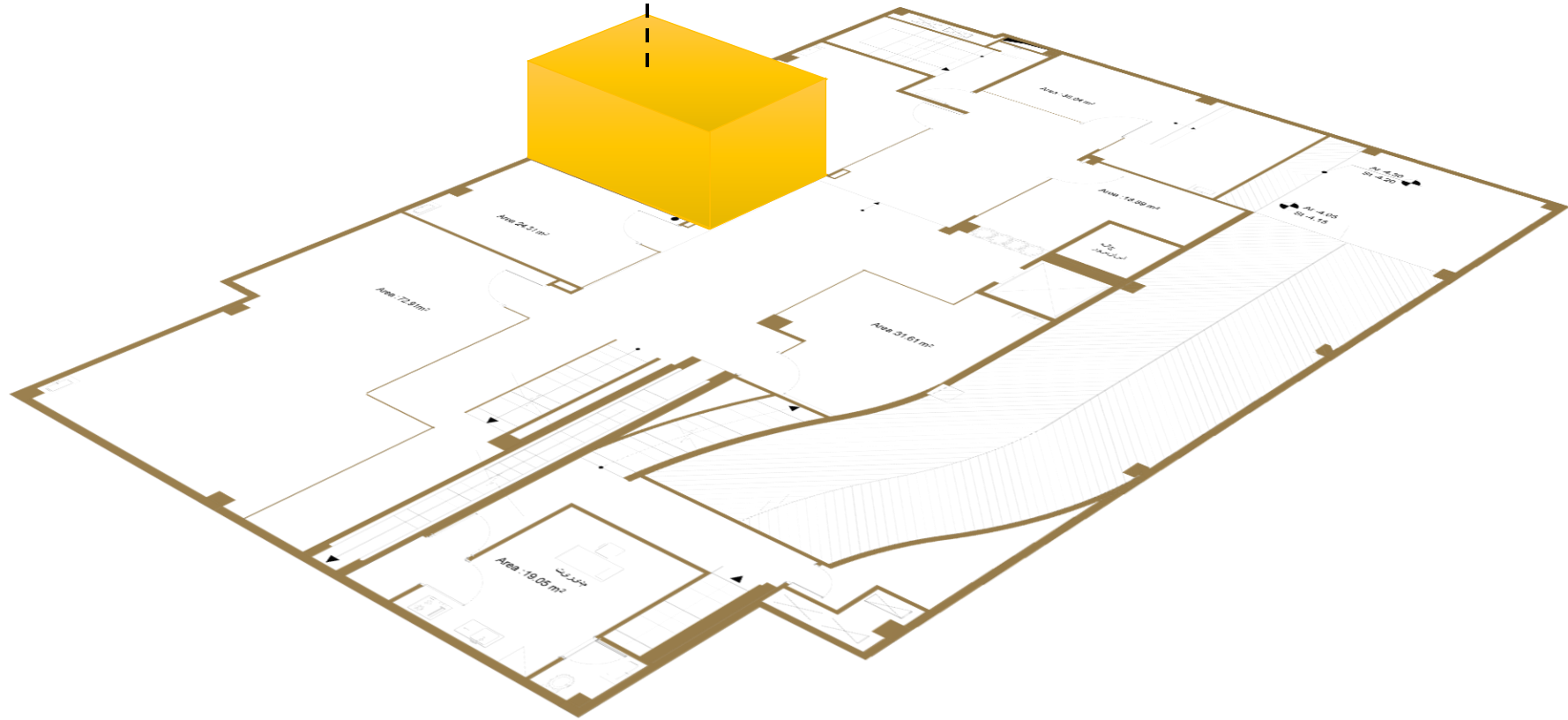
$S = 72 \text{ m}$



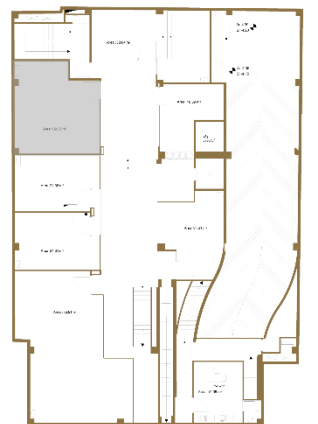
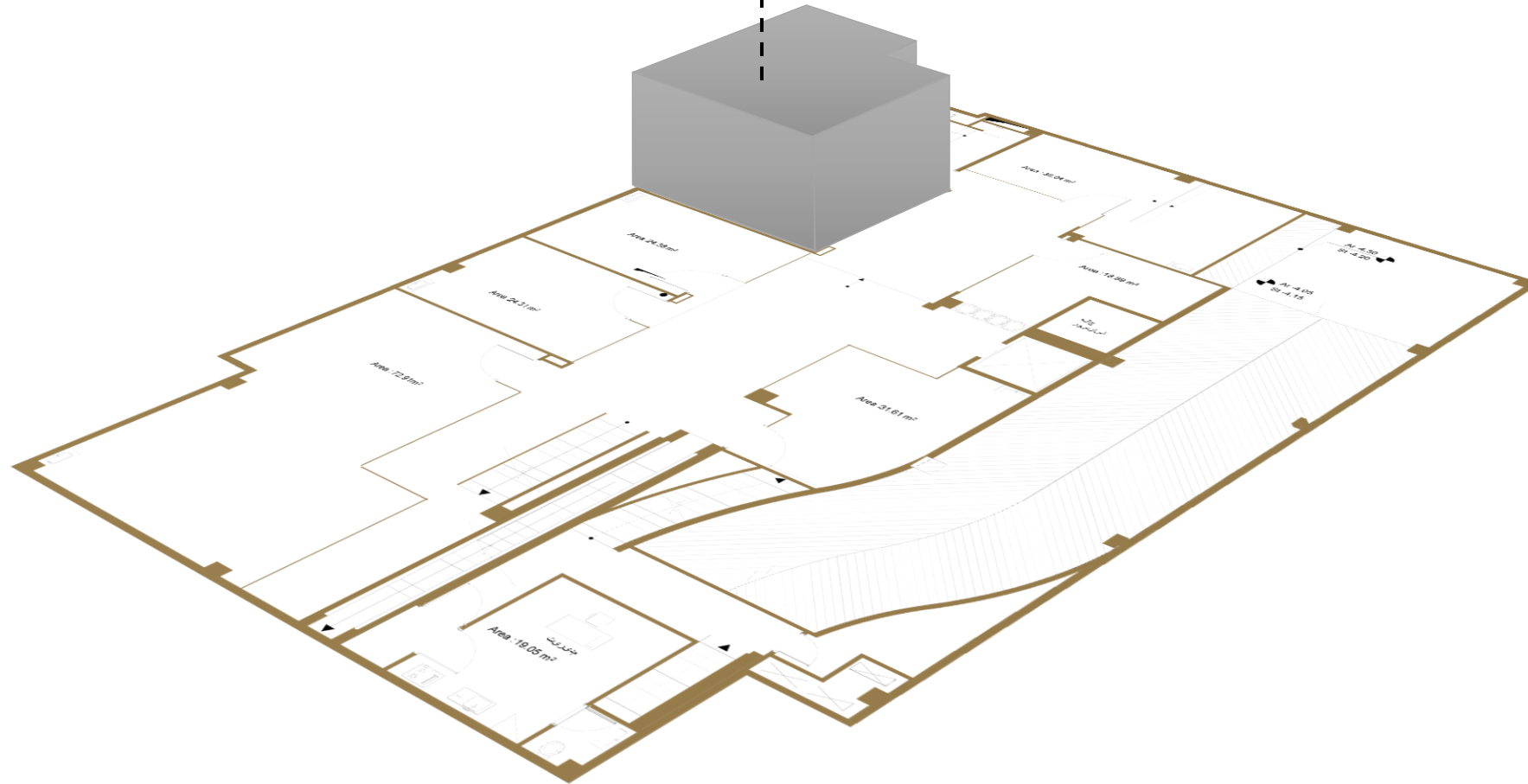
$S = 24 \text{ m}$

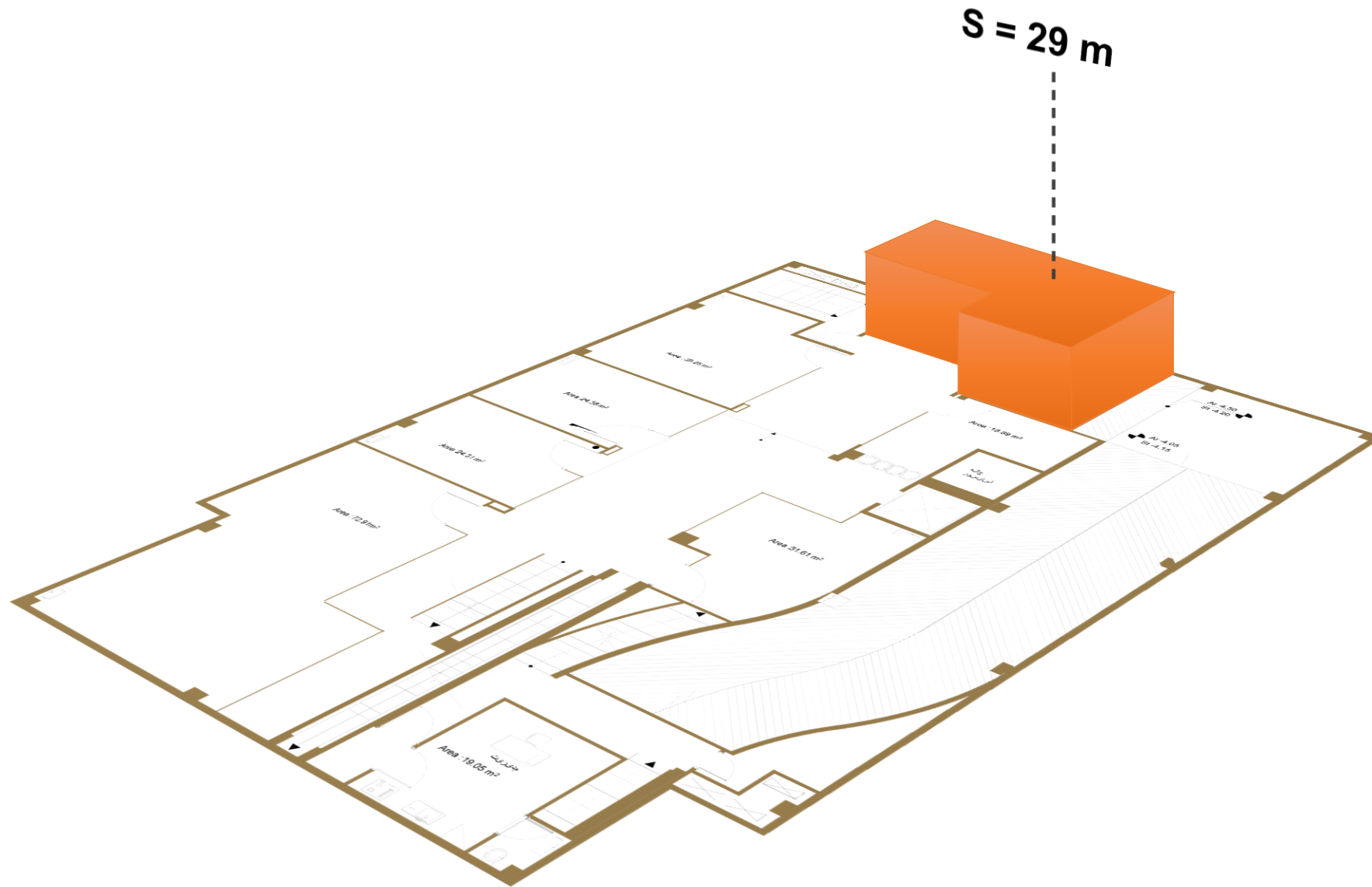


S = 25 m



$S = 39 \text{ m}$









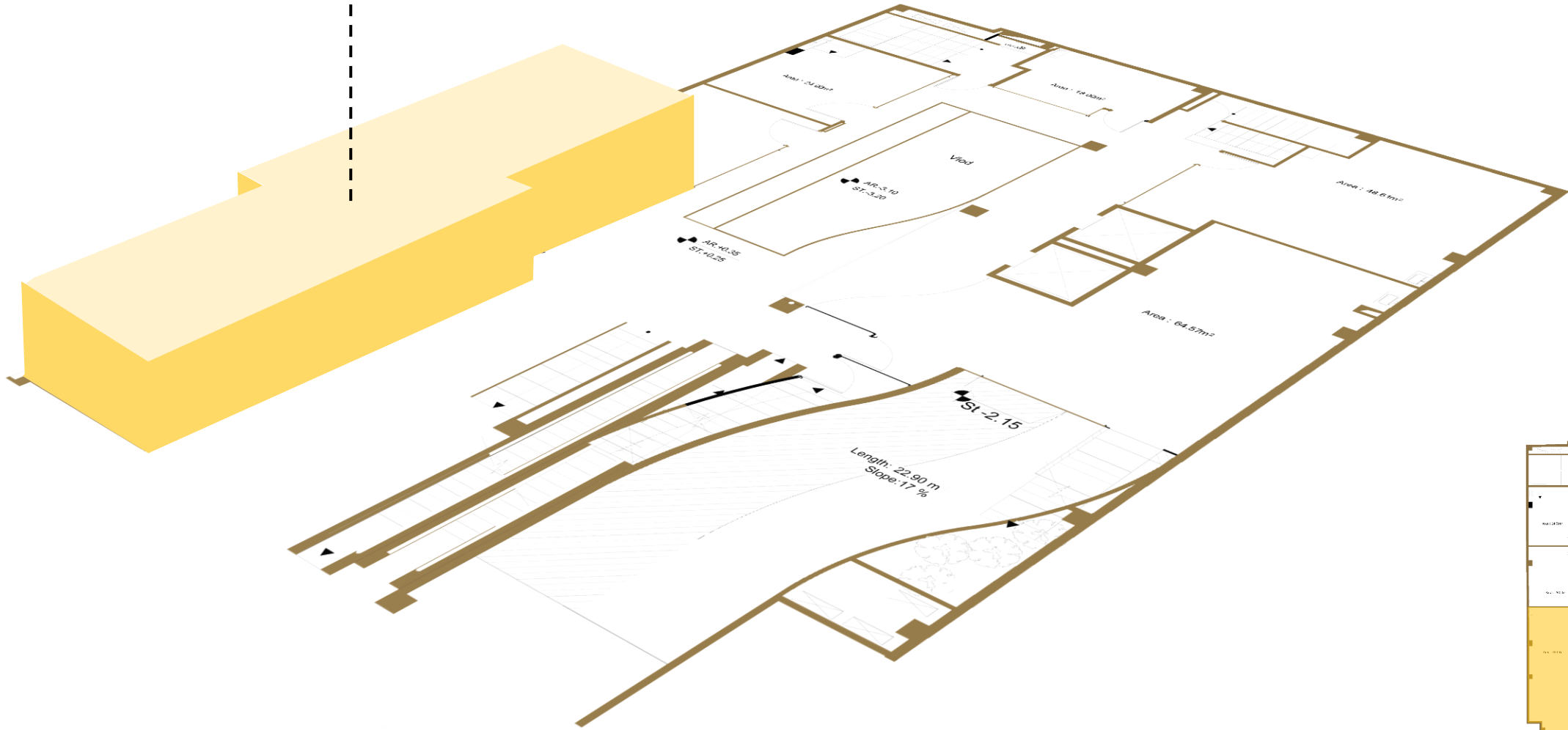


# طبقه ی همکف

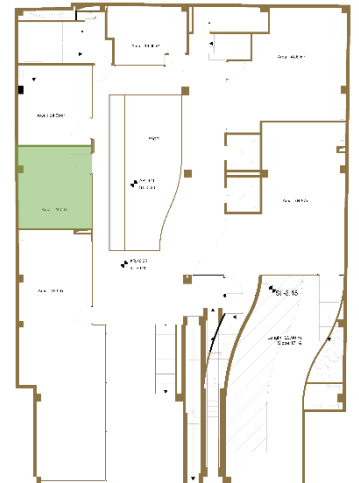
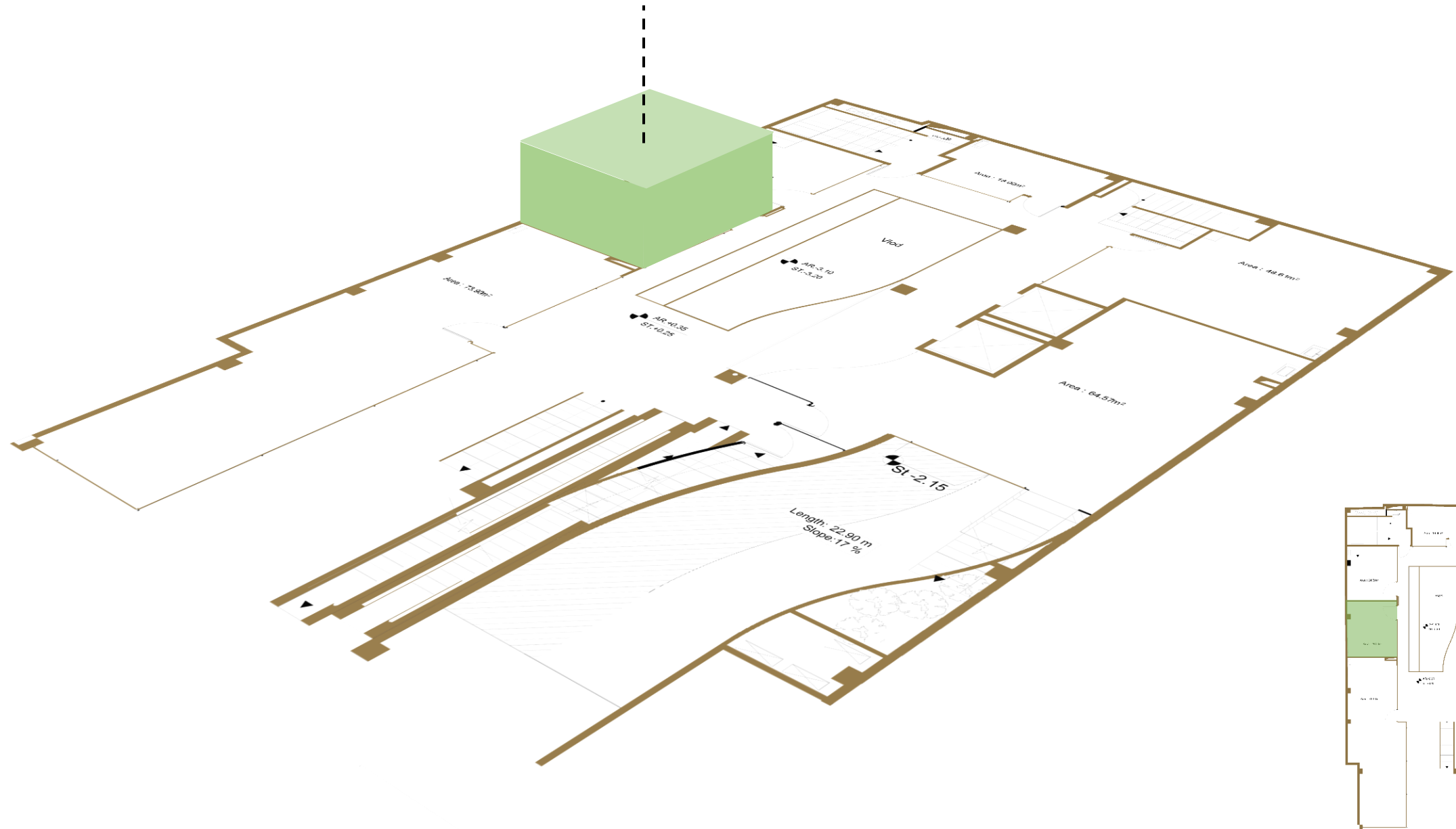
## 1. تجاری



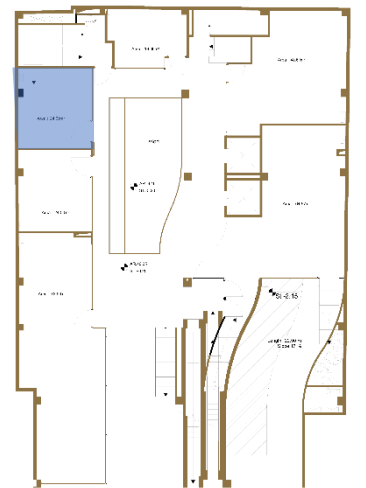
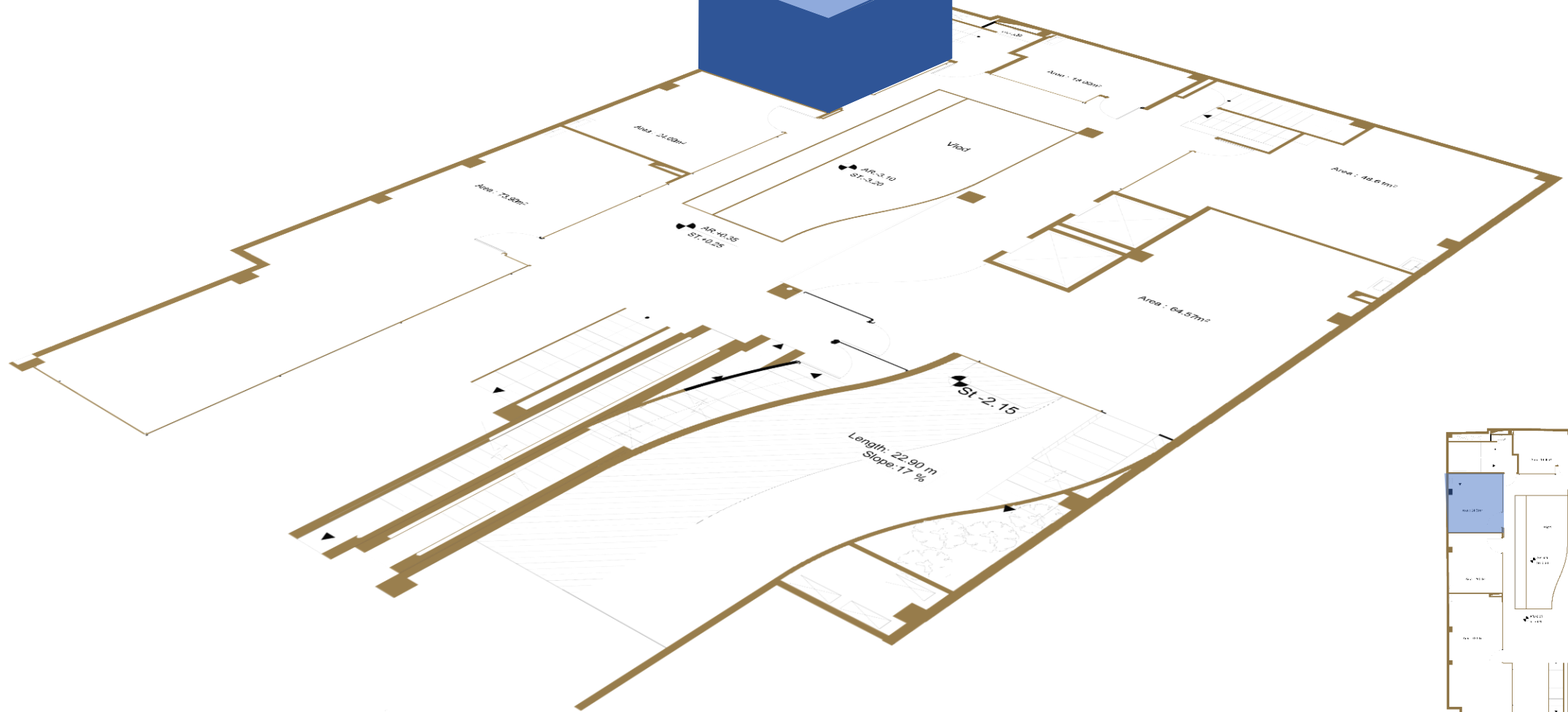
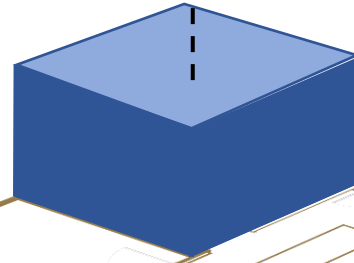
$$S = 74 \text{ m}^2$$



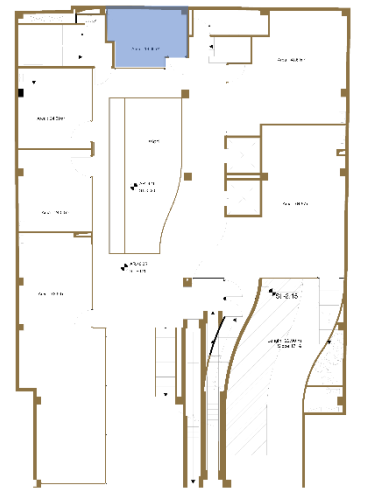
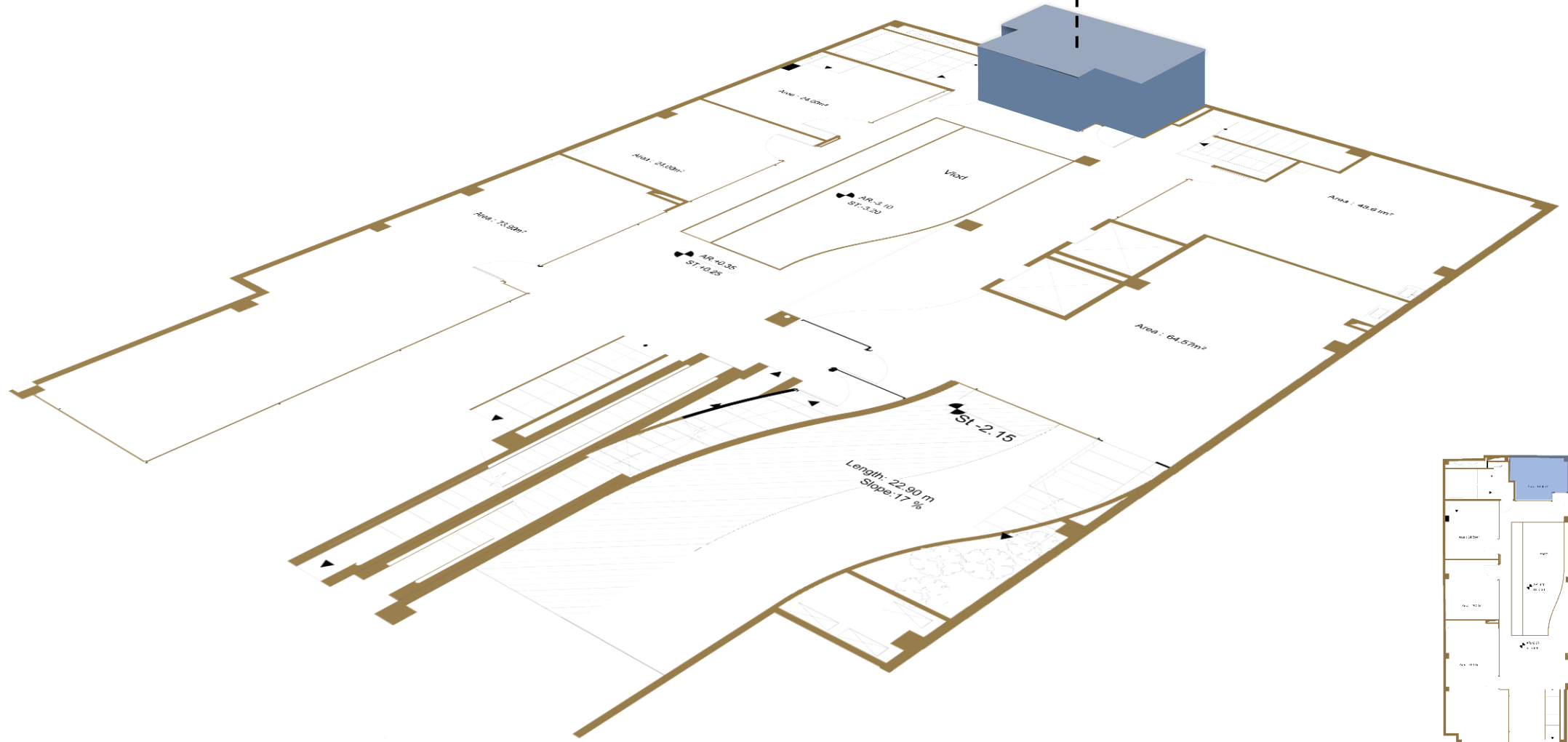
$S = 24.00 \text{ m}^2$



$$S = 24.00 \text{ m}^2$$

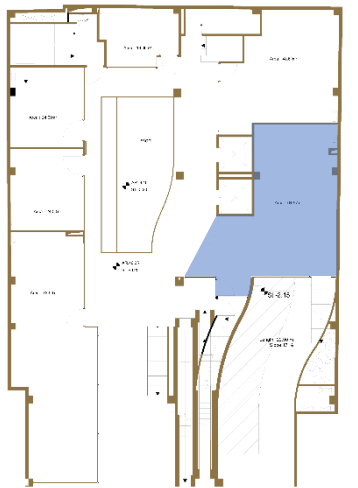
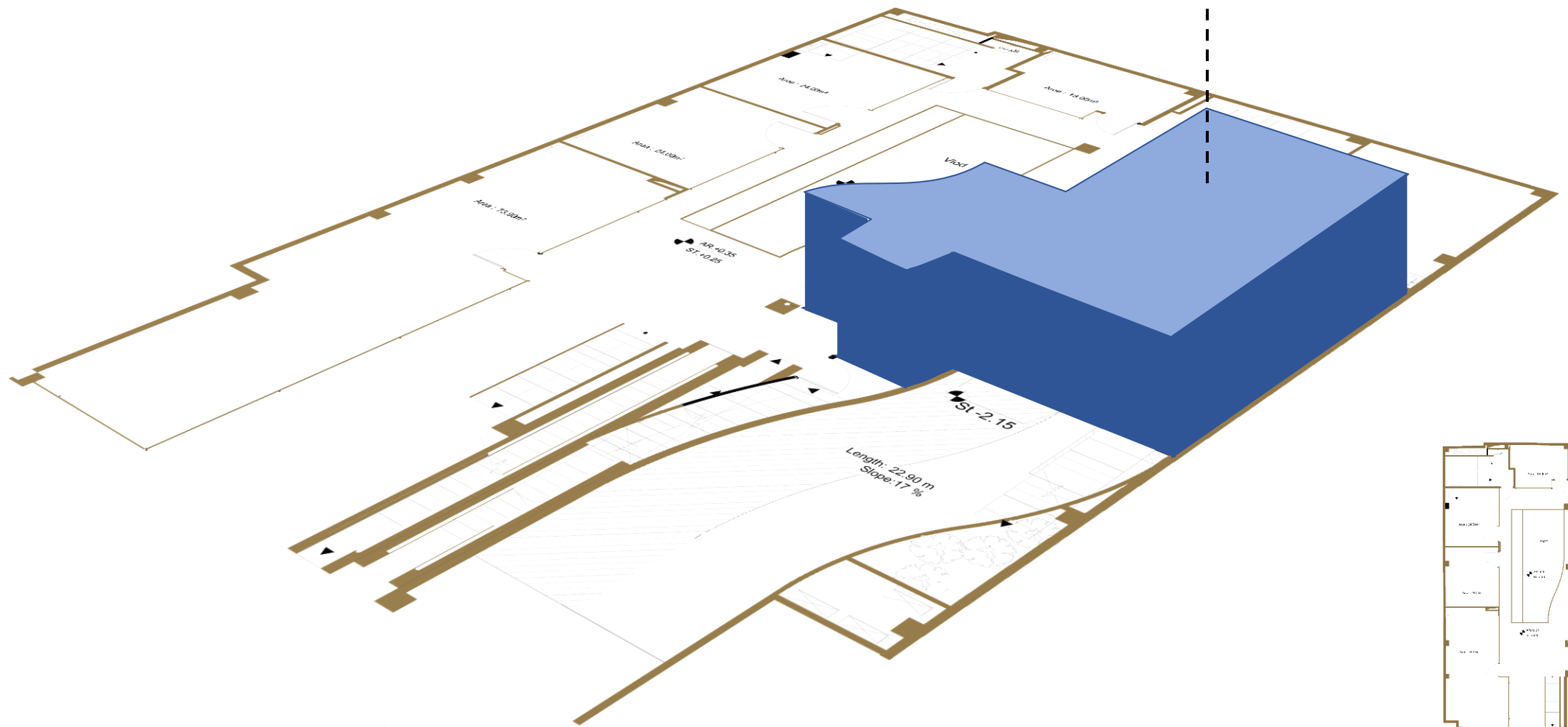


$$S = 18.00 \text{ m}^2$$



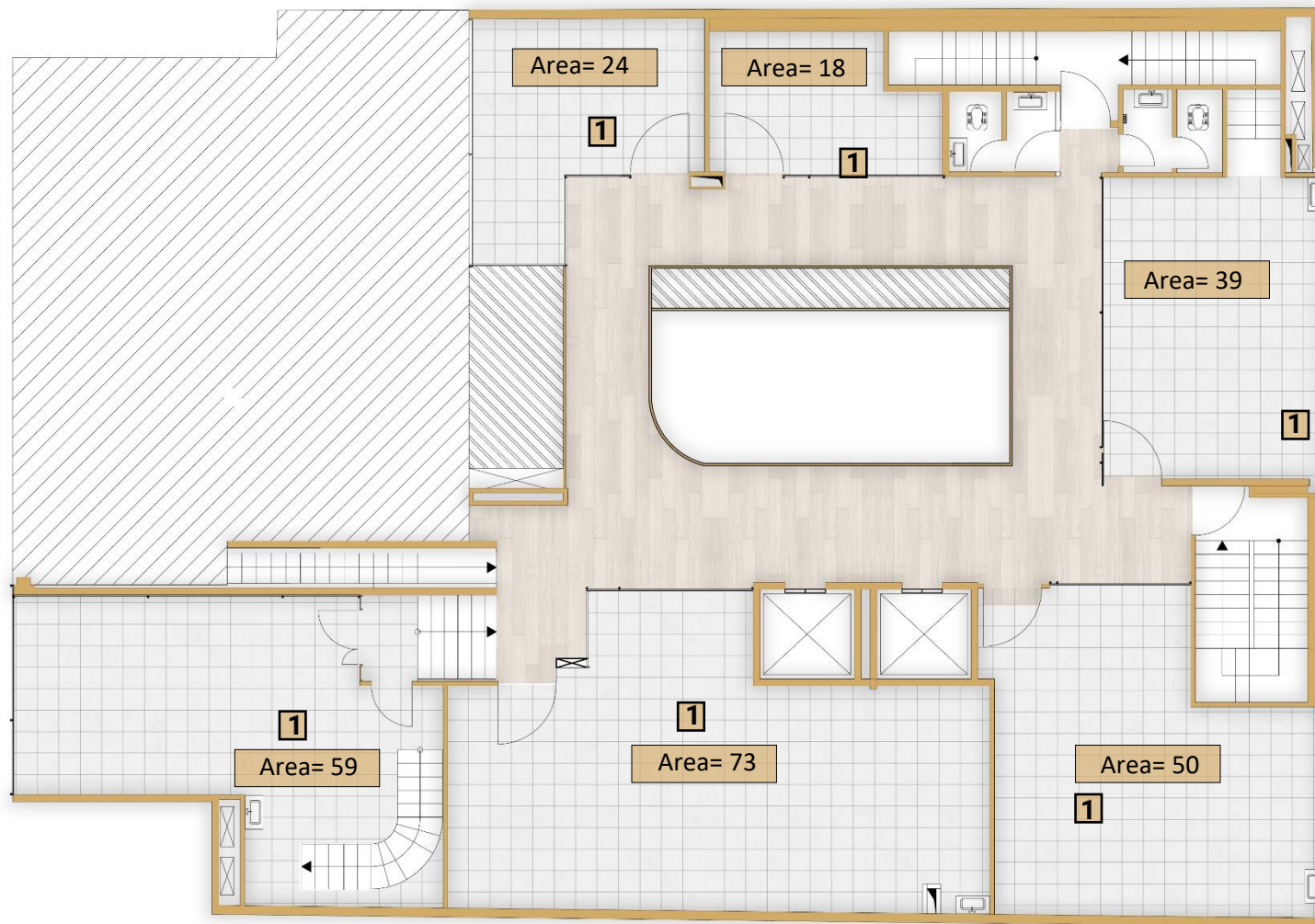


$$S = 71 \text{ m}^2$$



# نیم طبقه

1. تجاری





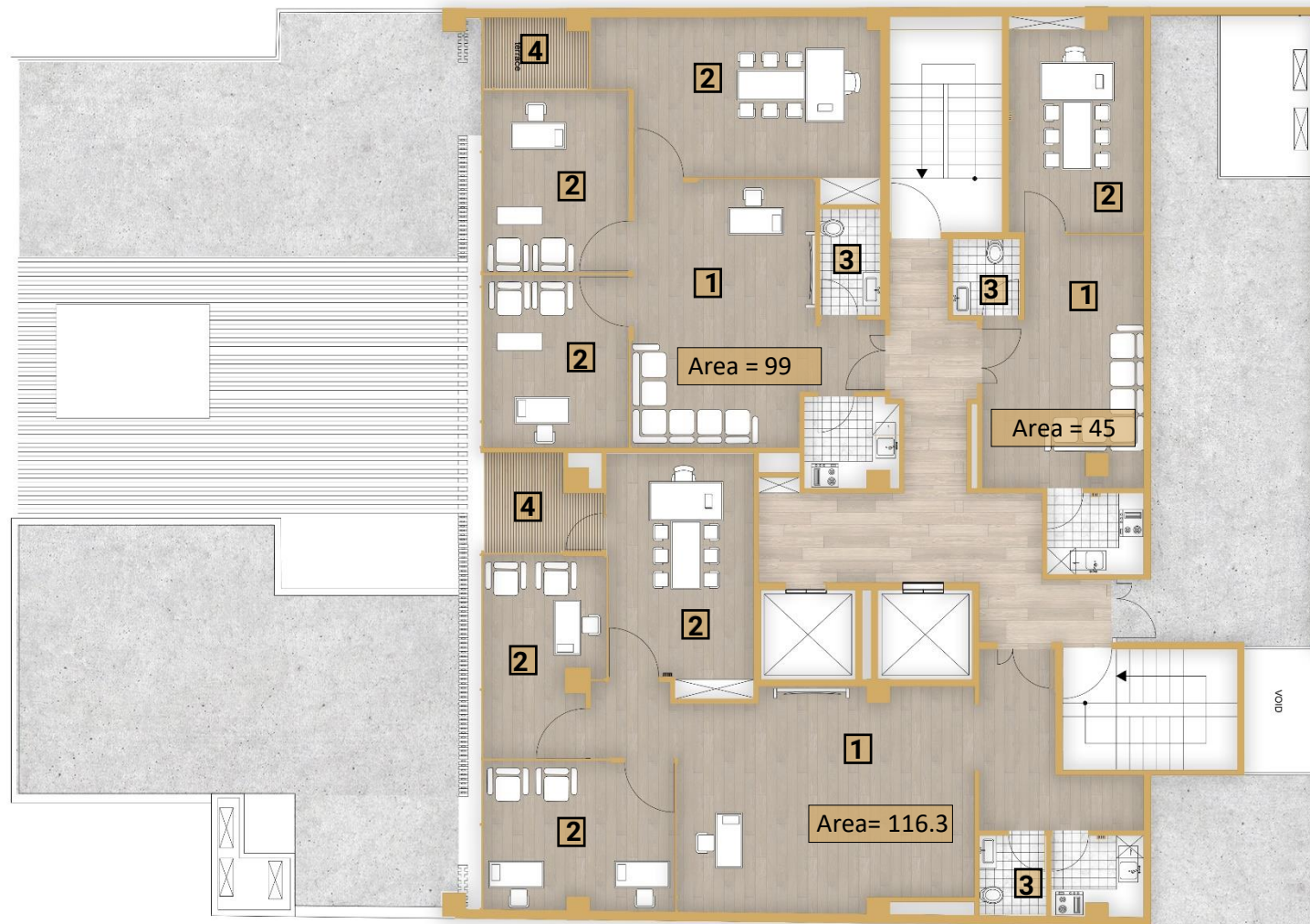
## طبقه ی تیپ



- 1. لابی
- 2. اداری
- 3. سرویس بهداشتی
- 4. تراس



## طبقه ی سوم



- 1. لابی
- 2. اداری
- 3. سرویس بهداشتی
- 4. تراس



