



Iran Winch Engineering Co.



Email: info@iranwinch.com

Telephone: 021-88881963-64

Fax: 021-88881965

Address: No.11, Sattari Ave, Nelson Mandela Exp. Way, Tehran, Iran

About US

Iran Winch engineering Company was established in 1974 with the aim of supplying equipment for oil, gas and petrochemical projects. Since 1995, with the approach of domestic production and creating national production in the field of industry, it has started to manufacture steel equipment and electrical parts of petrochemicals, Oil, gas, refiners as well as steel industry. In addition, to supplying equipment to its parents Company (Tehran Javan Co.), it was also participated in projects in the mentioned fields in phases 8, 6-7 of South Pars, DARKHOEIN, also had cooperation with foreign contractors such as DAELIM, Toyo-GGC and ENI. It has also completed.

Several projects with domestic contractors and employers, including SAZEH, TEHRAN JONOOB, MAPNA, CHAGALESH, DORRIZ, NIOEC, NISOC and etc.

We are proud to offer the best product suiting your demand in different fields such as Electrical, Instrument and Telecom.

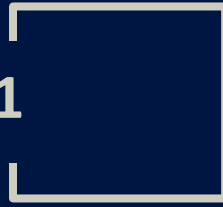
About US

Our Products

Our Products

Cable Tray System

1



2

Cable Ladder System



Support & Bracket

3



4

Conduit & Accessories



Installation Tool

5



1

Cable Tray system

We offer a wide range of cable tray systems to support tubing, electrical cables and instrumentation. Our cable trays are produced in fit for purpose materials like stainless steel, galvanized and aluminum to suit any project type both offshore and onshore. We also offer a range of cable ladder systems for heavier cable support. Cable trays are produced in different heights and widths to give more choice for loading space availability. The cable trays feature slot patterns allowing for optimal and efficient positioning of equipment and easy access for cable ties and other fixings such as tubing clamps. Cable tray products are complemented with a wide selection of brackets and fitting solutions enabling compact and stable fitting in all possible configurations and scenarios. A comprehensive range of standard and specialized accessories and fittings is also available for smart fitting solutions for standard to the most diverse types of equipment.



Straight



C type Inside



Return Flange Inside



C type Outside



Return Flange Outside

Prefabricated metal structure consists of a bottom with openings within the cable bearing surface. Solid bottom cable trays completely eliminate cable sagging and offer maximum protection for the cables.

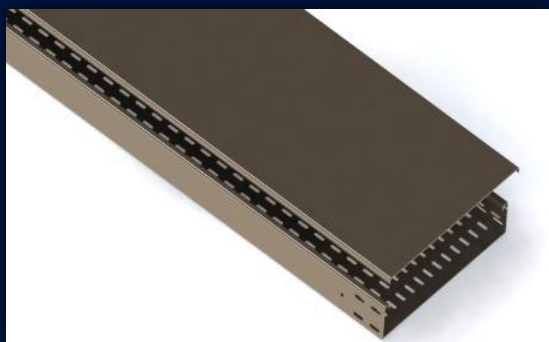
Cable tray covers shall be considered for any of the following purpose:

- Protection from falling objects or debris as many occur beneath personal wall ways.
- Shielding from ultra-violet rays of the sun and guarding against other weathering elements.
- Minimizing accumulation of foreign contaminants such as ash or other industrial deposits.
- Protection of cables and personnel where a riser tray penetrates a floor or grating.

Cable Tray system & Cover



| Width | Height | Thickness | Length |
|-------|---------|-----------|-----------|
| 50 | 50~100 | 1.5~3 | 2000~3000 |
| 100 | 50~100 | 1.5~3 | 2000~3000 |
| 150 | 50~100 | 1.5~3 | 2000~3000 |
| 200 | 100~150 | 1.5~3 | 2000~3000 |
| 300 | 100~150 | 1.5~3 | 2000~3000 |
| 400 | 100~150 | 1.5~3 | 2000~3000 |
| 500 | 100~150 | 1.5~3 | 2000~3000 |
| 600 | 100~150 | 1.5~3 | 2000~3000 |
| 700 | 100~150 | 1.5~3 | 2000~3000 |
| 800 | 100~150 | 1.5~3 | 2000~3000 |
| 900 | 100~150 | 1.5~3 | 2000~3000 |
| 1000 | 100~150 | 1.5~3 | 2000~3000 |



| Width | Height | Thickness | Length |
|-------|--------|-----------|-----------|
| 56 | 15 | 1.5~3 | 2000~3000 |
| 106 | 15 | 1.5~3 | 2000~3000 |
| 156 | 15 | 1.5~3 | 2000~3000 |
| 206 | 15 | 1.5~3 | 2000~3000 |
| 306 | 15 | 1.5~3 | 2000~3000 |
| 406 | 15 | 1.5~3 | 2000~3000 |
| 506 | 15 | 1.5~3 | 2000~3000 |
| 606 | 15 | 1.5~3 | 2000~3000 |
| 706 | 15 | 1.5~3 | 2000~3000 |
| 806 | 15 | 1.5~3 | 2000~3000 |
| 906 | 15 | 1.5-3 | 2000~3000 |
| 1006 | 15 | 1.5-3 | 2000~3000 |

Horizontal Cable Tray Elbow 90° & Cover

Horizontal bend cable tray is used for bending of cable tray.



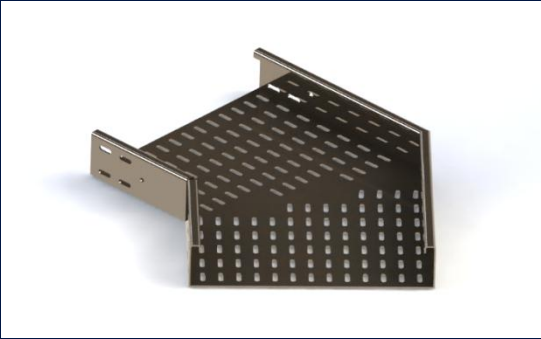
| Width | Height | Thickness | Radius |
|-------|---------|-----------|--------|
| 50 | 50~100 | 1.5~3 | 150 |
| 100 | 50~100 | 1.5~3 | 150 |
| 150 | 50~100 | 1.5~3 | 150 |
| 200 | 100~150 | 1.5~3 | 200 |
| 300 | 100~150 | 1.5~3 | 300 |
| 400 | 100~150 | 1.5~3 | 400 |
| 500 | 100~150 | 1.5~3 | 500 |
| 600 | 100~150 | 1.5~3 | 600 |
| 700 | 100~150 | 1.5~3 | 700 |
| 800 | 100~150 | 1.5~3 | 800 |
| 900 | 100-150 | 1.5~3 | 900 |
| 1000 | 100-150 | 1.5-3 | 1000 |



| Width | Height | Thickne ss | Radius |
|-------|--------|---------------|--------|
| 56 | 15 | 1.5~3 | 150 |
| 106 | 15 | 1.5~3 | 150 |
| 156 | 15 | 1.5~3 | 150 |
| 206 | 15 | 1.5~3 | 200 |
| 306 | 15 | 1.5~3 | 300 |
| 406 | 15 | 1.5~3 | 400 |
| 506 | 15 | 1.5~3 | 500 |
| 606 | 15 | 1.5~3 | 600 |
| 706 | 15 | 1.5~3 | 700 |
| 806 | 15 | 1.5~3 | 800 |
| 906 | 15 | 1.5-3 | 900 |
| 1006 | 15 | 1.5-3 | 1000 |

Horizontal Cable Tray Elbow 45° & 30° & Cover

Horizontal bend cable tray is used for the bending of cable tray.



| Width | Height | Thickness |
|-------|---------|-----------|
| 50 | 50~100 | 1.5~3 |
| 100 | 50~100 | 1.5~3 |
| 150 | 50~100 | 1.5~3 |
| 200 | 100~150 | 1.5~3 |
| 300 | 100~150 | 1.5~3 |
| 400 | 100~150 | 1.5~3 |
| 500 | 100~150 | 1.5~3 |
| 600 | 100~150 | 1.5~3 |
| 700 | 100~150 | 1.5~3 |
| 800 | 100~150 | 1.5~3 |
| 900 | 100-150 | 1.5~3 |
| 1000 | 100-150 | 1.5-3 |



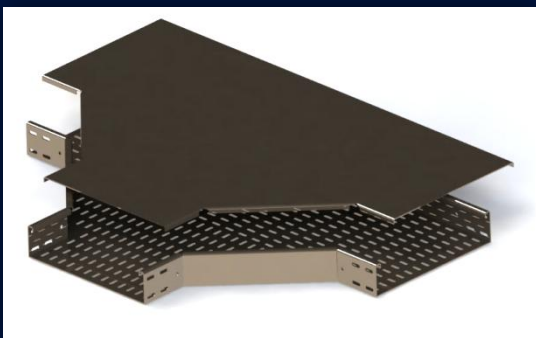
| Width | Height | Thickness |
|-------|--------|-----------|
| 56 | 15 | 1.5~3 |
| 106 | 15 | 1.5~3 |
| 156 | 15 | 1.5~3 |
| 206 | 15 | 1.5~3 |
| 306 | 15 | 1.5~3 |
| 406 | 15 | 1.5~3 |
| 506 | 15 | 1.5~3 |
| 606 | 15 | 1.5~3 |
| 706 | 15 | 1.5~3 |
| 806 | 15 | 1.5~3 |
| 906 | 15 | 1.5-3 |
| 1006 | 15 | 1.5-3 |

Horizontal Cable Tray Tee & Cover

It is used for joining four cable trays in four directions at 90 degree between each tray and other in the same plane.



| Width | Height | Thickness | Radius |
|-------|---------|-----------|--------|
| 50 | 50~100 | 1.5~3 | 150 |
| 100 | 50~100 | 1.5~3 | 150 |
| 150 | 50~100 | 1.5~3 | 150 |
| 200 | 100~150 | 1.5~3 | 200 |
| 300 | 100~150 | 1.5~3 | 300 |
| 400 | 100~150 | 1.5~3 | 400 |
| 500 | 100~150 | 1.5~3 | 500 |
| 600 | 100~150 | 1.5~3 | 600 |
| 700 | 100~150 | 1.5~3 | 700 |
| 800 | 100~150 | 1.5~3 | 800 |
| 900 | 100~150 | 1.5~3 | 900 |
| 1000 | 100~150 | 1.5~3 | 1000 |



| Width | Height | Thickness | Radius |
|-------|--------|-----------|--------|
| 56 | 15 | 1.5~3 | 150 |
| 106 | 15 | 1.5~3 | 150 |
| 156 | 15 | 1.5~3 | 150 |
| 206 | 15 | 1.5~3 | 200 |
| 306 | 15 | 1.5~3 | 300 |
| 406 | 15 | 1.5~3 | 400 |
| 506 | 15 | 1.5~3 | 500 |
| 606 | 15 | 1.5~3 | 600 |
| 706 | 15 | 1.5~3 | 700 |
| 806 | 15 | 1.5~3 | 800 |
| 906 | 15 | 1.5~3 | 900 |
| 1006 | 15 | 1.5~3 | 1000 |

Horizontal Cable Tray Cross & Cover

It is used for joining four cable trays in four directions at 90 degree between each tray and other in the same plane.



| Width | Height | Thickness | Radius |
|-------|---------|-----------|--------|
| 50 | 50~100 | 1.5~3 | 150 |
| 100 | 50~100 | 1.5~3 | 150 |
| 150 | 50~100 | 1.5~3 | 150 |
| 200 | 100~150 | 1.5~3 | 200 |
| 300 | 100~150 | 1.5~3 | 300 |
| 400 | 100~150 | 1.5~3 | 400 |
| 500 | 100~150 | 1.5~3 | 500 |
| 600 | 100~150 | 1.5~3 | 600 |
| 700 | 100~150 | 1.5~3 | 700 |
| 800 | 100~150 | 1.5~3 | 800 |
| 900 | 100~150 | 1.5~3 | 900 |
| 1000 | 100~150 | 1.5~3 | 1000 |



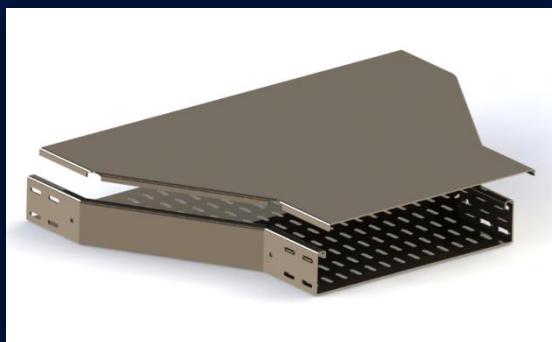
| Width | Height | Thickness | Radius |
|-------|--------|-----------|--------|
| 56 | 15 | 1.5~3 | 150 |
| 106 | 15 | 1.5~3 | 150 |
| 156 | 15 | 1.5~3 | 150 |
| 206 | 15 | 1.5~3 | 200 |
| 306 | 15 | 1.5~3 | 300 |
| 406 | 15 | 1.5~3 | 400 |
| 506 | 15 | 1.5~3 | 500 |
| 606 | 15 | 1.5~3 | 600 |
| 706 | 15 | 1.5~3 | 700 |
| 806 | 15 | 1.5~3 | 800 |
| 906 | 15 | 1.5~3 | 900 |
| 1006 | 15 | 1.5~3 | 1000 |

Horizontal Cable Tray Straight Reducer & Cover

In order to join two cable trays in different widths in the same plane



| Width 1 | Width 2 | Height | Thickness |
|---------|-----------|---------|-----------|
| 50 | 50 ~ 150 | 50~100 | 1.5~3 |
| 100 | 50 ~ 200 | 50~100 | 1.5~3 |
| 150 | 100 ~ 300 | 50~100 | 1.5~3 |
| 200 | 100 ~ 400 | 100~150 | 1.5~3 |
| 300 | 100 ~ 500 | 100~150 | 1.5~3 |
| 400 | 100 ~ 600 | 100~150 | 1.5~3 |
| 500 | 200 ~ 700 | 100~150 | 1.5~3 |
| 600 | 300 ~ 800 | 100~150 | 1.5~3 |
| 700 | 400 ~ 900 | 100~150 | 1.5~3 |
| 800 | 500~1000 | 100~150 | 1.5~3 |
| 900 | 700~1000 | 100~150 | 1.5~3 |
| 1000 | 800~1000 | 100~150 | 1.5~3 |



| Width 1 | Width 2 | Height | Thickness |
|---------|-----------|--------|-----------|
| 56 | 56 ~ 156 | 15 | 1.5~3 |
| 106 | 56 ~ 206 | 15 | 1.5~3 |
| 156 | 106 ~ 306 | 15 | 1.5~3 |
| 206 | 106 ~ 406 | 15 | 1.5~3 |
| 306 | 106 ~ 506 | 15 | 1.5~3 |
| 406 | 106 ~ 606 | 15 | 1.5~3 |
| 506 | 206 ~ 706 | 15 | 1.5~3 |
| 606 | 306 ~ 806 | 15 | 1.5~3 |
| 706 | 406 ~ 906 | 15 | 1.5~3 |
| 806 | 506~1006 | 15 | 1.5~3 |
| 906 | 706~1006 | 15 | 1.5~3 |
| 1006 | 806~1006 | 15 | 1.5~3 |

Horizontal Cable Tray Right hand Reducer & Cover

In order to join two cable trays in different widths in the same plane.



| Width 1 | Width 2 | Height | Thickness |
|---------|-----------|---------|-----------|
| 50 | 50 ~ 150 | 50~100 | 1.5~3 |
| 100 | 50 ~ 200 | 50~100 | 1.5~3 |
| 150 | 100 ~ 300 | 50~100 | 1.5~3 |
| 200 | 100 ~400 | 100~150 | 1.5~3 |
| 300 | 100 ~500 | 100~150 | 1.5~3 |
| 400 | 100 ~600 | 100~150 | 1.5~3 |
| 500 | 200 ~700 | 100~150 | 1.5~3 |
| 600 | 300 ~ 800 | 100~150 | 1.5~3 |
| 700 | 400 ~ 900 | 100~150 | 1.5~3 |
| 800 | 500~1000 | 100~150 | 1.5~3 |
| 900 | 700~1000 | 100~150 | 1.5~3 |
| 1000 | 800~1000 | 100~150 | 1.5~3 |



| Width 1 | Width 2 | Height | Thickness |
|---------|-----------|--------|-----------|
| 56 | 56 ~ 156 | 15 | 1.5~3 |
| 106 | 56 ~ 206 | 15 | 1.5~3 |
| 156 | 106 ~ 306 | 15 | 1.5~3 |
| 206 | 106 ~406 | 15 | 1.5~3 |
| 306 | 106 ~506 | 15 | 1.5~3 |
| 406 | 106 ~606 | 15 | 1.5~3 |
| 506 | 206 ~706 | 15 | 1.5~3 |
| 606 | 306 ~ 806 | 15 | 1.5~3 |
| 706 | 406 ~ 906 | 15 | 1.5~3 |
| 806 | 506~1006 | 15 | 1.5~3 |
| 906 | 706~1006 | 15 | 1.5~3 |
| 1006 | 806~1006 | 15 | 1.5~3 |

Horizontal Cable Tray Left hand Reducer & Cover

In order to join two cable trays in different widths in the same plane.



| Width 1 | Width 2 | Height | Thickness |
|---------|-----------|---------|-----------|
| 50 | 50 ~ 150 | 50~100 | 1.5~3 |
| 100 | 50 ~ 200 | 50~100 | 1.5~3 |
| 150 | 100 ~ 300 | 50~100 | 1.5~3 |
| 200 | 100 ~ 400 | 100~150 | 1.5~3 |
| 300 | 100 ~ 500 | 100~150 | 1.5~3 |
| 400 | 100 ~ 600 | 100~150 | 1.5~3 |
| 500 | 200 ~ 700 | 100~150 | 1.5~3 |
| 600 | 300 ~ 800 | 100~150 | 1.5~3 |
| 700 | 400 ~ 900 | 100~150 | 1.5~3 |
| 800 | 500~1000 | 100~150 | 1.5~3 |
| 900 | 700~1000 | 100~150 | 1.5~3 |
| 1000 | 800~1000 | 100~150 | 1.5~3 |



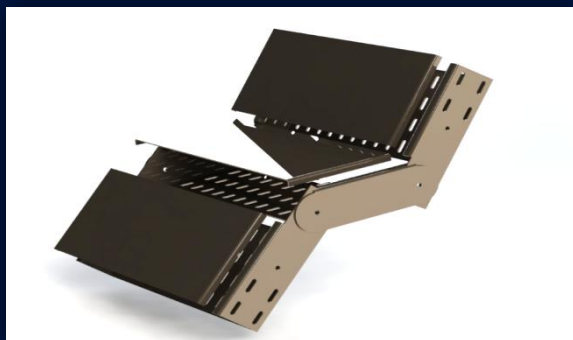
| Width 1 | Width 2 | Height | Thickness |
|---------|-----------|--------|-----------|
| 56 | 56 ~ 156 | 15 | 1.5~3 |
| 106 | 56 ~ 206 | 15 | 1.5~3 |
| 156 | 106 ~ 306 | 15 | 1.5~3 |
| 206 | 106 ~ 406 | 15 | 1.5~3 |
| 306 | 106 ~ 506 | 15 | 1.5~3 |
| 406 | 106 ~ 606 | 15 | 1.5~3 |
| 506 | 206 ~ 706 | 15 | 1.5~3 |
| 606 | 306 ~ 806 | 15 | 1.5~3 |
| 706 | 406 ~ 906 | 15 | 1.5~3 |
| 806 | 506~1006 | 15 | 1.5~3 |
| 906 | 706~1006 | 15 | 1.5~3 |
| 1006 | 806~1006 | 15 | 1.5~3 |

Horizontal Cable Tray Left hand Reducer & Cover

In order to join two cable trays in different widths in the same plane.



| Width | Height | Thickness |
|-------|---------|-----------|
| 50 | 50~100 | 1.5~3 |
| 100 | 50~100 | 1.5~3 |
| 150 | 50~100 | 1.5~3 |
| 200 | 100~150 | 1.5~3 |
| 300 | 100~150 | 1.5~3 |
| 400 | 100~150 | 1.5~3 |
| 500 | 100~150 | 1.5~3 |
| 600 | 100~150 | 1.5~3 |
| 700 | 100~150 | 1.5~3 |
| 800 | 100~150 | 1.5~3 |
| 900 | 100~150 | 1.5~3 |
| 1000 | 100~150 | 1.5~3 |



| Width | Height | Thickness |
|-------|--------|-----------|
| 56 | 15 | 1.5~3 |
| 106 | 15 | 1.5~3 |
| 156 | 15 | 1.5~3 |
| 206 | 15 | 1.5~3 |
| 306 | 15 | 1.5~3 |
| 406 | 15 | 1.5~3 |
| 506 | 15 | 1.5~3 |
| 606 | 15 | 1.5~3 |
| 706 | 15 | 1.5~3 |
| 806 | 15 | 1.5~3 |
| 906 | 15 | 1.5~3 |
| 1006 | 15 | 1.5~3 |

Fixed Inside Vertical Cable Tray Elbow 90° & Cover

It is used for changing the direction of the cable tray to different plane. Inside vertical elbow changes direction upward from the horizontal plane.



| Width | Height | Thickness |
|-------|---------|-----------|
| 50 | 50~100 | 1.5~3 |
| 100 | 50~100 | 1.5~3 |
| 150 | 50~100 | 1.5~3 |
| 200 | 100~150 | 1.5~3 |
| 300 | 100~150 | 1.5~3 |
| 400 | 100~150 | 1.5~3 |
| 500 | 100~150 | 1.5~3 |
| 600 | 100~150 | 1.5~3 |
| 700 | 100~150 | 1.5~3 |
| 800 | 100~150 | 1.5~3 |
| 900 | 100~150 | 1.5~3 |
| 1000 | 100~150 | 1.5~3 |



| Width | Height | Thickness |
|-------|--------|-----------|
| 56 | 15 | 1.5~3 |
| 106 | 15 | 1.5~3 |
| 156 | 15 | 1.5~3 |
| 206 | 15 | 1.5~3 |
| 306 | 15 | 1.5~3 |
| 406 | 15 | 1.5~3 |
| 506 | 15 | 1.5~3 |
| 606 | 15 | 1.5~3 |
| 706 | 15 | 1.5~3 |
| 806 | 15 | 1.5~3 |
| 906 | 15 | 1.5~3 |
| 1006 | 15 | 1.5~3 |

Fixed Outside Vertical Cable Tray Elbow 90° & Cover

It is used for changing the direction of the cable tray to different plane. Outside vertical elbow changes direction upward from the horizontal plane.



| Width | Height | Thickness |
|-------|---------|-----------|
| 50 | 50~100 | 1.5~3 |
| 100 | 50~100 | 1.5~3 |
| 150 | 50~100 | 1.5~3 |
| 200 | 100~150 | 1.5~3 |
| 300 | 100~150 | 1.5~3 |
| 400 | 100~150 | 1.5~3 |
| 500 | 100~150 | 1.5~3 |
| 600 | 100~150 | 1.5~3 |
| 700 | 100~150 | 1.5~3 |
| 800 | 100~150 | 1.5~3 |
| 900 | 100~150 | 1.5~3 |
| 1000 | 100~150 | 1.5~3 |



| Width | Height | Thickness |
|-------|--------|-----------|
| 56 | 15 | 1.5~3 |
| 106 | 15 | 1.5~3 |
| 156 | 15 | 1.5~3 |
| 206 | 15 | 1.5~3 |
| 306 | 15 | 1.5~3 |
| 406 | 15 | 1.5~3 |
| 506 | 15 | 1.5~3 |
| 606 | 15 | 1.5~3 |
| 706 | 15 | 1.5~3 |
| 806 | 15 | 1.5~3 |
| 906 | 15 | 1.5~3 |
| 1006 | 15 | 1.5~3 |

Fixed Inside Vertical Cable Tray Elbow 45° & Cover

It is used for changing the direction of the cable tray to different plane. Inside vertical elbow changes direction upward from the horizontal plane.



| Width | Height | Thickness |
|-------|---------|-----------|
| 50 | 50~100 | 1.5~3 |
| 100 | 50~100 | 1.5~3 |
| 150 | 50~100 | 1.5~3 |
| 200 | 100~150 | 1.5~3 |
| 300 | 100~150 | 1.5~3 |
| 400 | 100~150 | 1.5~3 |
| 500 | 100~150 | 1.5~3 |
| 600 | 100~150 | 1.5~3 |
| 700 | 100~150 | 1.5~3 |
| 800 | 100~150 | 1.5~3 |
| 900 | 100~150 | 1.5~3 |
| 1000 | 100~150 | 1.5~3 |



| Width | Height | Thickness |
|-------|--------|-----------|
| 56 | 15 | 1.5~3 |
| 106 | 15 | 1.5~3 |
| 156 | 15 | 1.5~3 |
| 206 | 15 | 1.5~3 |
| 306 | 15 | 1.5~3 |
| 406 | 15 | 1.5~3 |
| 506 | 15 | 1.5~3 |
| 606 | 15 | 1.5~3 |
| 706 | 15 | 1.5~3 |
| 806 | 15 | 1.5~3 |
| 906 | 15 | 1.5~3 |
| 1006 | 15 | 1.5~3 |

Fixed Outside Vertical Cable Tray Elbow 45° & Cover

It is used for changing the direction of the cable tray to different plane. Outside vertical elbow changes direction upward from the horizontal plane.



| Width | Height | Thickness |
|-------|---------|-----------|
| 50 | 50~100 | 1.5~3 |
| 100 | 50~100 | 1.5~3 |
| 150 | 50~100 | 1.5~3 |
| 200 | 100~150 | 1.5~3 |
| 300 | 100~150 | 1.5~3 |
| 400 | 100~150 | 1.5~3 |
| 500 | 100~150 | 1.5~3 |
| 600 | 100~150 | 1.5~3 |
| 700 | 100~150 | 1.5~3 |
| 800 | 100~150 | 1.5~3 |
| 900 | 100~150 | 1.5~3 |
| 1000 | 100~150 | 1.5~3 |



| Width | Height | Thickness |
|-------|--------|-----------|
| 56 | 15 | 1.5~3 |
| 106 | 15 | 1.5~3 |
| 156 | 15 | 1.5~3 |
| 206 | 15 | 1.5~3 |
| 306 | 15 | 1.5~3 |
| 406 | 15 | 1.5~3 |
| 506 | 15 | 1.5~3 |
| 606 | 15 | 1.5~3 |
| 706 | 15 | 1.5~3 |
| 806 | 15 | 1.5~3 |
| 906 | 15 | 1.5~3 |
| 1006 | 15 | 1.5~3 |

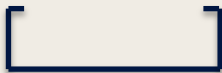
Cable Ladder

2

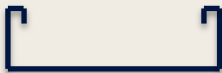
We offer a wide range of cable ladder systems produced in fit for purpose materials like stainless steel, galvanized and Aluminum to suit any project type, industry requirement and corrosive environmental. Cable ladders are typically available in straight lengths of 3 and 6 meters, complimented by a comprehensive offering of fittings such as tees, bends, risers and reducers to easily change level or direction. Covers, fixings, cable cleats, light fittings, system dividers and other accessories are also available for easy installation of the complete cable management system. The cable ladder systems come with a range of loading depths and load capacities.



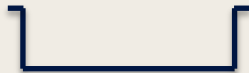
Straight



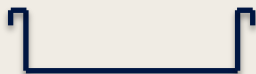
C type Inside



Return Flange Inside



C type Outside



Return Flange Outside

A prefabricated metal structure consists of two side rails connected by individual transverse rungs. Cable ladders are the most common and the most economical types of ladder

Cable Ladder covers shall be considered for any of the following purpose:

- Protection from falling objects or debris as many occur beneath personal wall ways.
- Shielding from ultra-violet rays of the sun and guarding against other weathering elements.
- Minimizing accumulation of foreign contaminants such as ash or other industrial deposits.
- Protection of cables and personnel where a riser tray penetrates a floor or grating.

Straight Cable Ladder & Cover



| Width | Height | Thickness | Length |
|-------|---------|-----------|-----------|
| 50 | 50~100 | 1.5~3 | 2000~3000 |
| 100 | 50~100 | 1.5~3 | 2000~3000 |
| 150 | 50~100 | 1.5~3 | 2000~3000 |
| 200 | 100~150 | 1.5~3 | 2000~3000 |
| 300 | 100~150 | 1.5~3 | 2000~3000 |
| 400 | 100~150 | 1.5~3 | 2000~3000 |
| 500 | 100~150 | 1.5~3 | 2000~3000 |
| 600 | 100~150 | 1.5~3 | 2000~3000 |
| 700 | 100~150 | 1.5~3 | 2000~3000 |
| 800 | 100~150 | 1.5~3 | 2000~3000 |
| 900 | 100-150 | 1.5~3 | 2000~3000 |
| 1000 | 100-150 | 1.5-3 | 2000~3000 |



| Width | Height | Thickness | Length |
|-------|--------|-----------|-----------|
| 56 | 15 | 1.5~3 | 2000~3000 |
| 106 | 15 | 1.5~3 | 2000~3000 |
| 156 | 15 | 1.5~3 | 2000~3000 |
| 206 | 15 | 1.5~3 | 2000~3000 |
| 306 | 15 | 1.5~3 | 2000~3000 |
| 406 | 15 | 1.5~3 | 2000~3000 |
| 506 | 15 | 1.5~3 | 2000~3000 |
| 606 | 15 | 1.5~3 | 2000~3000 |
| 706 | 15 | 1.5~3 | 2000~3000 |
| 806 | 15 | 1.5~3 | 2000~3000 |
| 906 | 15 | 1.5~3 | 2000~3000 |
| 1006 | 15 | 1.5-3 | 2000~3000 |

Horizontal Cable Ladder Elbow 90° & Cover

Horizontal bend cable Ladder is used for bending of cable tray.



| Width | Height | Thickne ss | Radius |
|-------|---------|---------------|--------|
| 50 | 50~100 | 1.5~3 | 150 |
| 100 | 50~100 | 1.5~3 | 150 |
| 150 | 50~100 | 1.5~3 | 150 |
| 200 | 100~150 | 1.5~3 | 200 |
| 300 | 100~150 | 1.5~3 | 300 |
| 400 | 100~150 | 1.5~3 | 400 |
| 500 | 100~150 | 1.5~3 | 500 |
| 600 | 100~150 | 1.5~3 | 600 |
| 700 | 100~150 | 1.5~3 | 700 |
| 800 | 100~150 | 1.5~3 | 800 |
| 900 | 100-150 | 1.5~3 | 900 |
| 1000 | 100-150 | 1.5-3 | 1000 |



| Width | Height | Thickne ss | Radius |
|-------|--------|---------------|--------|
| 56 | 15 | 1.5~3 | 150 |
| 106 | 15 | 1.5~3 | 150 |
| 156 | 15 | 1.5~3 | 150 |
| 206 | 15 | 1.5~3 | 200 |
| 306 | 15 | 1.5~3 | 300 |
| 406 | 15 | 1.5~3 | 400 |
| 506 | 15 | 1.5~3 | 500 |
| 606 | 15 | 1.5~3 | 600 |
| 706 | 15 | 1.5~3 | 700 |
| 806 | 15 | 1.5~3 | 800 |
| 906 | 15 | 1.5-3 | 900 |
| 1006 | 15 | 1.5-3 | 1000 |

Horizontal Cable Ladder Elbow 45° & 30° & Cover

Horizontal bend cable ladder is used for the bending of cable tray.



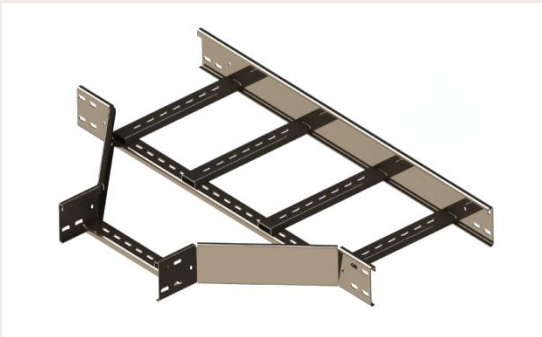
| Width | Height | Thickness |
|-------|---------|-----------|
| 50 | 50~100 | 1.5~3 |
| 100 | 50~100 | 1.5~3 |
| 150 | 50~100 | 1.5~3 |
| 200 | 100~150 | 1.5~3 |
| 300 | 100~150 | 1.5~3 |
| 400 | 100~150 | 1.5~3 |
| 500 | 100~150 | 1.5~3 |
| 600 | 100~150 | 1.5~3 |
| 700 | 100~150 | 1.5~3 |
| 800 | 100~150 | 1.5~3 |
| 900 | 100-150 | 1.5~3 |
| 1000 | 100-150 | 1.5-3 |



| Width | Height | Thickness |
|-------|--------|-----------|
| 56 | 15 | 1.5~3 |
| 106 | 15 | 1.5~3 |
| 156 | 15 | 1.5~3 |
| 206 | 15 | 1.5~3 |
| 306 | 15 | 1.5~3 |
| 406 | 15 | 1.5~3 |
| 506 | 15 | 1.5~3 |
| 606 | 15 | 1.5~3 |
| 706 | 15 | 1.5~3 |
| 806 | 15 | 1.5~3 |
| 906 | 15 | 1.5-3 |
| 1006 | 15 | 1.5-3 |

Horizontal Cable Ladder Tee & Cover

It is a fitting that is used for joining three cable ladders in three directions at 90 degree between each ladder and other in the same plane.



| Width | Height | Thickness | Radius |
|-------|---------|-----------|--------|
| 50 | 50~100 | 1.5~3 | 150 |
| 100 | 50~100 | 1.5~3 | 150 |
| 150 | 50~100 | 1.5~3 | 150 |
| 200 | 100~150 | 1.5~3 | 200 |
| 300 | 100~150 | 1.5~3 | 300 |
| 400 | 100~150 | 1.5~3 | 400 |
| 500 | 100~150 | 1.5~3 | 500 |
| 600 | 100~150 | 1.5~3 | 600 |
| 700 | 100~150 | 1.5~3 | 700 |
| 800 | 100~150 | 1.5~3 | 800 |
| 900 | 100~150 | 1.5~3 | 900 |
| 1000 | 100~150 | 1.5~3 | 1000 |



| Width | Height | Thickness | Radius |
|-------|--------|-----------|--------|
| 56 | 15 | 1.5~3 | 150 |
| 106 | 15 | 1.5~3 | 150 |
| 156 | 15 | 1.5~3 | 150 |
| 206 | 15 | 1.5~3 | 200 |
| 306 | 15 | 1.5~3 | 300 |
| 406 | 15 | 1.5~3 | 400 |
| 506 | 15 | 1.5~3 | 500 |
| 606 | 15 | 1.5~3 | 600 |
| 706 | 15 | 1.5~3 | 700 |
| 806 | 15 | 1.5~3 | 800 |
| 906 | 15 | 1.5~3 | 900 |
| 1006 | 15 | 1.5~3 | 1000 |

Horizontal Cable Ladder Cross & Cover

It is used for joining four cable trays in four directions at 90 degree between each tray and other in the same plane.



| Width | Height | Thickness | Radius |
|-------|---------|-----------|--------|
| 50 | 50~100 | 1.5~3 | 150 |
| 100 | 50~100 | 1.5~3 | 150 |
| 150 | 50~100 | 1.5~3 | 150 |
| 200 | 100~150 | 1.5~3 | 200 |
| 300 | 100~150 | 1.5~3 | 300 |
| 400 | 100~150 | 1.5~3 | 400 |
| 500 | 100~150 | 1.5~3 | 500 |
| 600 | 100~150 | 1.5~3 | 600 |
| 700 | 100~150 | 1.5~3 | 700 |
| 800 | 100~150 | 1.5~3 | 800 |
| 900 | 100~150 | 1.5~3 | 900 |
| 1000 | 100~150 | 1.5~3 | 1000 |



| Width | Height | Thickness | Radius |
|-------|--------|-----------|--------|
| 56 | 15 | 1.5~3 | 150 |
| 106 | 15 | 1.5~3 | 150 |
| 156 | 15 | 1.5~3 | 150 |
| 206 | 15 | 1.5~3 | 200 |
| 306 | 15 | 1.5~3 | 300 |
| 406 | 15 | 1.5~3 | 400 |
| 506 | 15 | 1.5~3 | 500 |
| 606 | 15 | 1.5~3 | 600 |
| 706 | 15 | 1.5~3 | 700 |
| 806 | 15 | 1.5~3 | 800 |
| 906 | 15 | 1.5~3 | 900 |
| 1006 | 15 | 1.5~3 | 1000 |

Horizontal Cable Ladder Straight Reducer & Cover

In order to join two cable Ladders in different widths in the same plane.



| Width 1 | Width 2 | Height | Thickness |
|---------|-----------|---------|-----------|
| 50 | 50 ~ 150 | 50~100 | 1.5~3 |
| 100 | 50 ~ 200 | 50~100 | 1.5~3 |
| 150 | 100 ~ 300 | 50~100 | 1.5~3 |
| 200 | 100 ~400 | 100~150 | 1.5~3 |
| 300 | 100 ~500 | 100~150 | 1.5~3 |
| 400 | 100 ~600 | 100~150 | 1.5~3 |
| 500 | 200 ~700 | 100~150 | 1.5~3 |
| 600 | 300 ~ 800 | 100~150 | 1.5~3 |
| 700 | 400 ~ 900 | 100~150 | 1.5~3 |
| 800 | 500~1000 | 100~150 | 1.5~3 |
| 900 | 700~1000 | 100~150 | 1.5~3 |
| 1000 | 800~1000 | 100~150 | 1.5~3 |



| Width 1 | Width 2 | Height | Thickness |
|---------|-----------|--------|-----------|
| 56 | 56 ~ 156 | 15 | 1.5~3 |
| 106 | 56 ~ 206 | 15 | 1.5~3 |
| 156 | 106 ~ 306 | 15 | 1.5~3 |
| 206 | 106 ~406 | 15 | 1.5~3 |
| 306 | 106 ~506 | 15 | 1.5~3 |
| 406 | 106 ~606 | 15 | 1.5~3 |
| 506 | 206 ~706 | 15 | 1.5~3 |
| 606 | 306 ~ 806 | 15 | 1.5~3 |
| 706 | 406 ~ 906 | 15 | 1.5~3 |
| 806 | 506~1006 | 15 | 1.5~3 |
| 906 | 706~1006 | 15 | 1.5~3 |
| 1006 | 806~1006 | 15 | 1.5~3 |

Horizontal Cable Ladder Right hand Reducer & Cover

In order to join two cable Ladders in different widths in the same plane.



| Width 1 | Width 2 | Height | Thickness |
|---------|-----------|---------|-----------|
| 50 | 50 ~ 150 | 50~100 | 1.5~3 |
| 100 | 50 ~ 200 | 50~100 | 1.5~3 |
| 150 | 100 ~ 300 | 50~100 | 1.5~3 |
| 200 | 100 ~400 | 100~150 | 1.5~3 |
| 300 | 100 ~500 | 100~150 | 1.5~3 |
| 400 | 100 ~600 | 100~150 | 1.5~3 |
| 500 | 200 ~700 | 100~150 | 1.5~3 |
| 600 | 300 ~ 800 | 100~150 | 1.5~3 |
| 700 | 400 ~ 900 | 100~150 | 1.5~3 |
| 800 | 500~1000 | 100~150 | 1.5~3 |
| 900 | 700~1000 | 100~150 | 1.5~3 |
| 1000 | 800~1000 | 100~150 | 1.5~3 |



| Width 1 | Width 2 | Height | Thickness |
|---------|-----------|--------|-----------|
| 56 | 56 ~ 156 | 15 | 1.5~3 |
| 106 | 56 ~ 206 | 15 | 1.5~3 |
| 156 | 106 ~ 306 | 15 | 1.5~3 |
| 206 | 106 ~406 | 15 | 1.5~3 |
| 306 | 106 ~506 | 15 | 1.5~3 |
| 406 | 106 ~606 | 15 | 1.5~3 |
| 506 | 206 ~706 | 15 | 1.5~3 |
| 606 | 306 ~ 806 | 15 | 1.5~3 |
| 706 | 406 ~ 906 | 15 | 1.5~3 |
| 806 | 506~1006 | 15 | 1.5~3 |
| 906 | 706~1006 | 15 | 1.5~3 |
| 1006 | 806~1006 | 15 | 1.5~3 |

Horizontal Cable Ladder Left hand Reducer & Cover

In order to join two cable Ladders in different widths in the same plane.



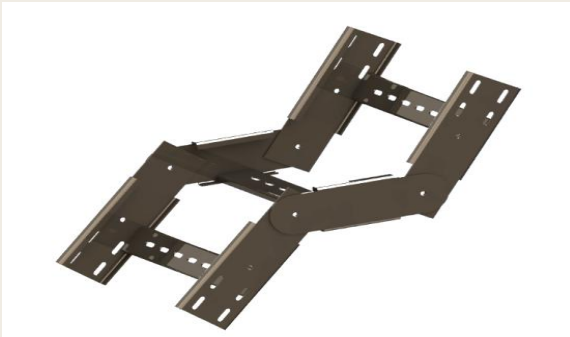
| Width 1 | Width 2 | Height | Thickness |
|---------|-----------|---------|-----------|
| 50 | 50 ~ 150 | 50~100 | 1.5~3 |
| 100 | 50 ~ 200 | 50~100 | 1.5~3 |
| 150 | 100 ~ 300 | 50~100 | 1.5~3 |
| 200 | 100 ~ 400 | 100~150 | 1.5~3 |
| 300 | 100 ~ 500 | 100~150 | 1.5~3 |
| 400 | 100 ~ 600 | 100~150 | 1.5~3 |
| 500 | 200 ~ 700 | 100~150 | 1.5~3 |
| 600 | 300 ~ 800 | 100~150 | 1.5~3 |
| 700 | 400 ~ 900 | 100~150 | 1.5~3 |
| 800 | 500~1000 | 100~150 | 1.5~3 |
| 900 | 700~1000 | 100~150 | 1.5~3 |
| 1000 | 800~1000 | 100~150 | 1.5~3 |



| Width 1 | Width 2 | Height | Thickness |
|---------|-----------|--------|-----------|
| 56 | 56 ~ 156 | 15 | 1.5~3 |
| 106 | 56 ~ 206 | 15 | 1.5~3 |
| 156 | 106 ~ 306 | 15 | 1.5~3 |
| 206 | 106 ~ 406 | 15 | 1.5~3 |
| 306 | 106 ~ 506 | 15 | 1.5~3 |
| 406 | 106 ~ 606 | 15 | 1.5~3 |
| 506 | 206 ~ 706 | 15 | 1.5~3 |
| 606 | 306 ~ 806 | 15 | 1.5~3 |
| 706 | 406 ~ 906 | 15 | 1.5~3 |
| 806 | 506~1006 | 15 | 1.5~3 |
| 906 | 706~1006 | 15 | 1.5~3 |
| 1006 | 806~1006 | 15 | 1.5~3 |

Adjustable Inside & Outside Vertical Cable Ladder Elbow 30°, 45°, 60° & 90° & Cover

It is used for changing the direction of the cable tray to different plane. Inside vertical elbow changes direction upward from the horizontal plane. As its name suggests, these types of risers can be changed to desired direction.



| Width | Height | Thickness |
|-------|---------|-----------|
| 50 | 50~100 | 1.5~3 |
| 100 | 50~100 | 1.5~3 |
| 150 | 50~100 | 1.5~3 |
| 200 | 100~150 | 1.5~3 |
| 300 | 100~150 | 1.5~3 |
| 400 | 100~150 | 1.5~3 |
| 500 | 100~150 | 1.5~3 |
| 600 | 100~150 | 1.5~3 |
| 700 | 100~150 | 1.5~3 |
| 800 | 100~150 | 1.5~3 |
| 900 | 100~150 | 1.5~3 |
| 1000 | 100~150 | 1.5~3 |



| Width | Height | Thickness |
|-------|--------|-----------|
| 56 | 15 | 1.5~3 |
| 106 | 15 | 1.5~3 |
| 156 | 15 | 1.5~3 |
| 206 | 15 | 1.5~3 |
| 306 | 15 | 1.5~3 |
| 406 | 15 | 1.5~3 |
| 506 | 15 | 1.5~3 |
| 606 | 15 | 1.5~3 |
| 706 | 15 | 1.5~3 |
| 806 | 15 | 1.5~3 |
| 906 | 15 | 1.5~3 |
| 1006 | 15 | 1.5~3 |

Fixed Inside Vertical Cable Ladder Elbow 90° & Cover

It is used for changing the direction of the cable ladder to different plane. Inside vertical elbow changes direction upward from the horizontal plane.



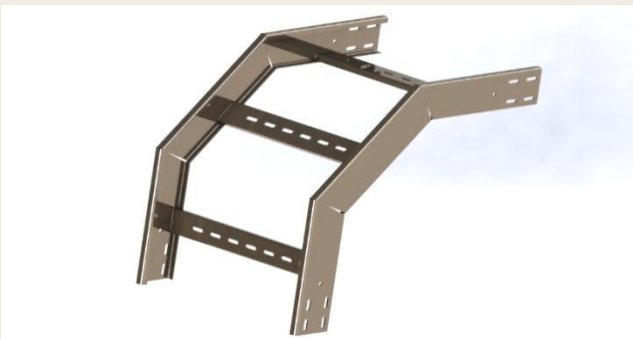
| Width | Height | Thickness |
|-------|---------|-----------|
| 50 | 50~100 | 1.5~3 |
| 100 | 50~100 | 1.5~3 |
| 150 | 50~100 | 1.5~3 |
| 200 | 100~150 | 1.5~3 |
| 300 | 100~150 | 1.5~3 |
| 400 | 100~150 | 1.5~3 |
| 500 | 100~150 | 1.5~3 |
| 600 | 100~150 | 1.5~3 |
| 700 | 100~150 | 1.5~3 |
| 800 | 100~150 | 1.5~3 |
| 900 | 100~150 | 1.5~3 |
| 1000 | 100~150 | 1.5~3 |



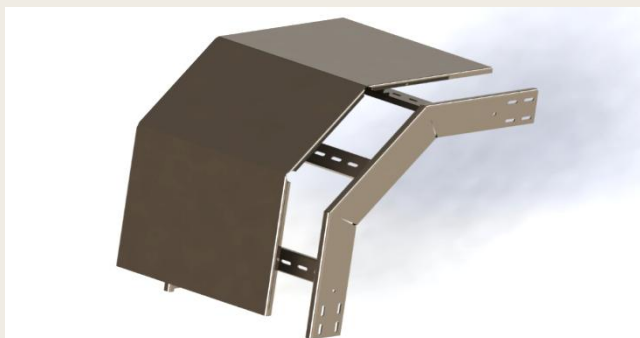
| Width | Height | Thickness |
|-------|--------|-----------|
| 56 | 15 | 1.5~3 |
| 106 | 15 | 1.5~3 |
| 156 | 15 | 1.5~3 |
| 206 | 15 | 1.5~3 |
| 306 | 15 | 1.5~3 |
| 406 | 15 | 1.5~3 |
| 506 | 15 | 1.5~3 |
| 606 | 15 | 1.5~3 |
| 706 | 15 | 1.5~3 |
| 806 | 15 | 1.5~3 |
| 906 | 15 | 1.5~3 |
| 1006 | 15 | 1.5~3 |

Fixed Outside Vertical Cable Ladder Elbow 90° & Cover

It is used for changing the direction of the cable ladder to different plane. Outside vertical elbow changes direction upward from the horizontal plane.



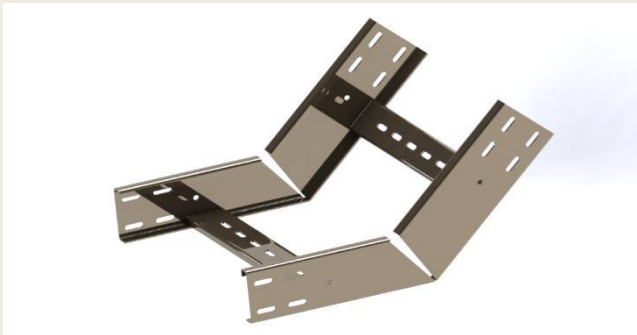
| Width | Height | Thickness |
|-------|---------|-----------|
| 50 | 50~100 | 1.5~3 |
| 100 | 50~100 | 1.5~3 |
| 150 | 50~100 | 1.5~3 |
| 200 | 100~150 | 1.5~3 |
| 300 | 100~150 | 1.5~3 |
| 400 | 100~150 | 1.5~3 |
| 500 | 100~150 | 1.5~3 |
| 600 | 100~150 | 1.5~3 |
| 700 | 100~150 | 1.5~3 |
| 800 | 100~150 | 1.5~3 |
| 900 | 100~150 | 1.5~3 |
| 1000 | 100~150 | 1.5~3 |



| Width | Height | Thickness |
|-------|--------|-----------|
| 56 | 15 | 1.5~3 |
| 106 | 15 | 1.5~3 |
| 156 | 15 | 1.5~3 |
| 206 | 15 | 1.5~3 |
| 306 | 15 | 1.5~3 |
| 406 | 15 | 1.5~3 |
| 506 | 15 | 1.5~3 |
| 606 | 15 | 1.5~3 |
| 706 | 15 | 1.5~3 |
| 806 | 15 | 1.5~3 |
| 906 | 15 | 1.5~3 |
| 1006 | 15 | 1.5~3 |

Fixed Inside Vertical Cable Ladder Elbow 45° & Cover

It is used for changing the direction of the cable ladder to different plane. Inside vertical elbow changes direction upward from the horizontal plane.



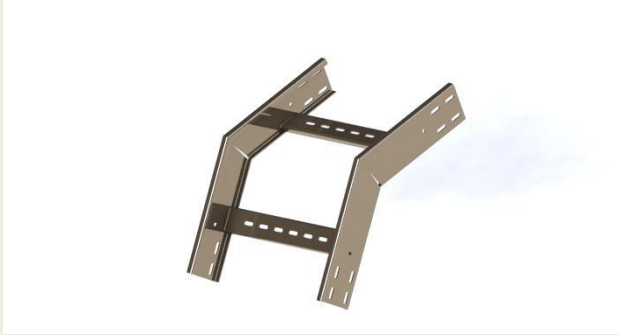
| Width | Height | Thickness |
|-------|---------|-----------|
| 50 | 50~100 | 1.5~3 |
| 100 | 50~100 | 1.5~3 |
| 150 | 50~100 | 1.5~3 |
| 200 | 100~150 | 1.5~3 |
| 300 | 100~150 | 1.5~3 |
| 400 | 100~150 | 1.5~3 |
| 500 | 100~150 | 1.5~3 |
| 600 | 100~150 | 1.5~3 |
| 700 | 100~150 | 1.5~3 |
| 800 | 100~150 | 1.5~3 |
| 900 | 100~150 | 1.5~3 |
| 1000 | 100~150 | 1.5~3 |



| Width | Height | Thickness |
|-------|--------|-----------|
| 56 | 15 | 1.5~3 |
| 106 | 15 | 1.5~3 |
| 156 | 15 | 1.5~3 |
| 206 | 15 | 1.5~3 |
| 306 | 15 | 1.5~3 |
| 406 | 15 | 1.5~3 |
| 506 | 15 | 1.5~3 |
| 606 | 15 | 1.5~3 |
| 706 | 15 | 1.5~3 |
| 806 | 15 | 1.5~3 |
| 906 | 15 | 1.5~3 |
| 1006 | 15 | 1.5~3 |

Fixed Outside Vertical Cable Ladder Elbow 45° & Cover

It is used for changing the direction of the cable ladder to different plane. Outside vertical elbow changes direction upward from the horizontal plane.



| Width | Height | Thickness |
|-------|---------|-----------|
| 50 | 50~100 | 1.5~3 |
| 100 | 50~100 | 1.5~3 |
| 150 | 50~100 | 1.5~3 |
| 200 | 100~150 | 1.5~3 |
| 300 | 100~150 | 1.5~3 |
| 400 | 100~150 | 1.5~3 |
| 500 | 100~150 | 1.5~3 |
| 600 | 100~150 | 1.5~3 |
| 700 | 100~150 | 1.5~3 |
| 800 | 100~150 | 1.5~3 |
| 900 | 100~150 | 1.5~3 |
| 1000 | 100~150 | 1.5~3 |



| Width | Height | Thickness |
|-------|--------|-----------|
| 56 | 15 | 1.5~3 |
| 106 | 15 | 1.5~3 |
| 156 | 15 | 1.5~3 |
| 206 | 15 | 1.5~3 |
| 306 | 15 | 1.5~3 |
| 406 | 15 | 1.5~3 |
| 506 | 15 | 1.5~3 |
| 606 | 15 | 1.5~3 |
| 706 | 15 | 1.5~3 |
| 806 | 15 | 1.5~3 |
| 906 | 15 | 1.5~3 |
| 1006 | 15 | 1.5~3 |



3 Support & Bracket

Cable tray brackets and supports can be used for cable baskets or trucking. They are often used for suspending trays from the ceiling, fixing them to a wall or securely mounting them on the floor.

Support



C-Support



I-Support



L-Support



Double U-Support



Support



Box



Ground Support

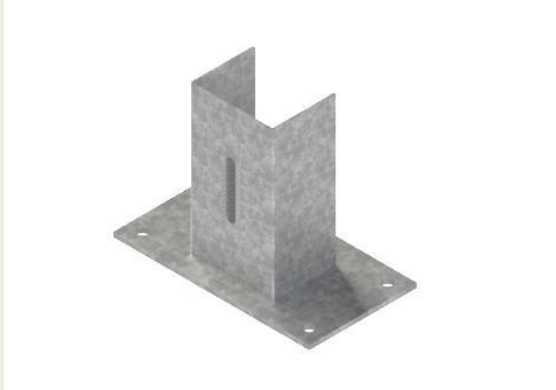
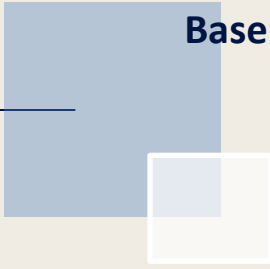


Double C Support

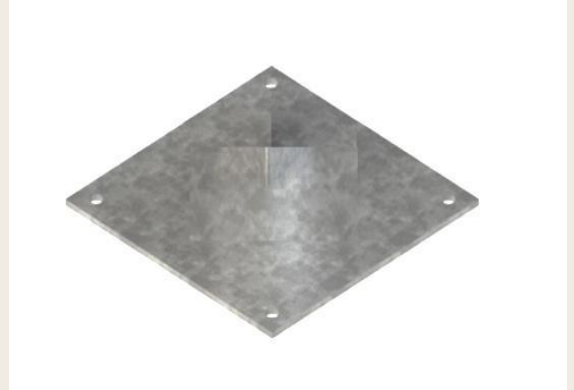


Ceiling Support

Base Plate



BASE PLATE



POST BASE – adjustable



POST BASE – One Side



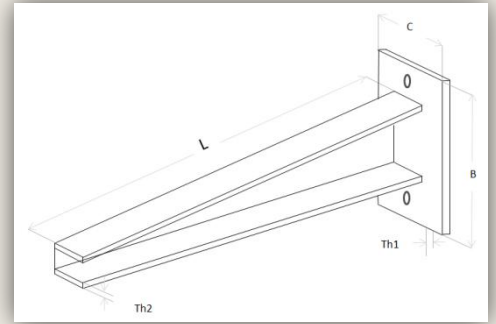
POST BASE – Tow Side

| Code | Thickness 1 | Thickness 2 (Base plate) |
|-------------------------------|-------------|-----------------------------|
| BASE PLATE | | |
| POST BASE – adjustable | | |
| POST BASE – One Side | | |
| POST BASE – Tow Side | | |

Bracket

Brackets are used for supporting cable trays & ladders on walls, ceiling, and top floor and under floor.

| Code | Length | Thickness |
|-----------------|------------------------|--------------------|
| UNP Bracket | $70 \leq TH \leq 1020$ | $2 \leq TH \leq 4$ |
| General Bracket | $70 \leq TH \leq 1020$ | $2 \leq TH \leq 4$ |
| I Bracket | $70 \leq TH \leq 1020$ | $2 \leq TH \leq 4$ |
| L Bracket | $70 \leq TH \leq 1020$ | $2 \leq TH \leq 4$ |



General Bracket



I Bracket



L Bracket



UNP Bracket



Dimension

All sizes are in millimeters

H: Height

L: Length

Th: Thickness

D: Diameter

W: Weight

Materials

1. Aluminum
2. ST 37
3. Stainless steel

Coating

1. Hot Dip Galvanized Zinc After fabrication
2. Sandblast

Specifying hot-dip galvanizing is simply done by using ASTM specifications developed to produce high-quality galvanized coatings. The main specifications that pertain to hot-dip galvanizing are:

- ASTM A123 - general iron and steel products
- ASTM A153 - small parts

Conduit

4

Conduit fittings play a critical role in electrical installations, ensuring safety, Organization, and protection of wiring systems. From residential buildings to industrial facilities, conduit fittings are integral components that facilitate the smooth functioning of electrical systems. In this blog, we will explore the world of conduit fittings, exploring their types, functions, across various sectors.

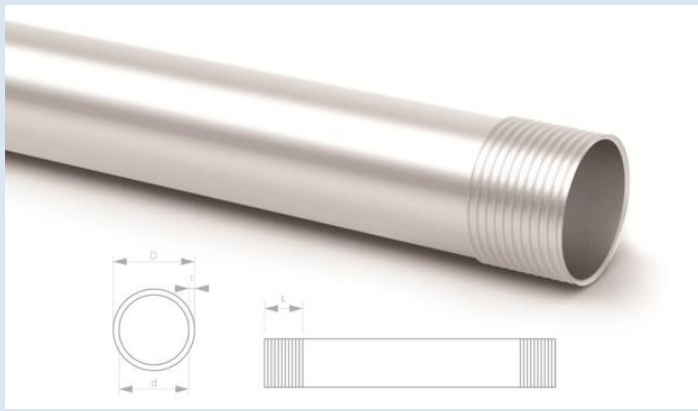
Conduit fittings are components used to connect and secure electrical conduits, which are protective tubing or piping systems used to encase and route electrical wires. These fittings are essential for safeguarding wiring systems against environmental factors, mechanical damage, and ensuring compliance with electrical codes.

Electrical conduit is a tubing system that is designed to route and protect wiring and cabling within a building or fixed structure. Usually installed into a wall rather than being surface mounted, cable conduit is designed to prevent damage from sharp objects impact or moisture.

PG Conduit



- Pipe length is 3000 or 6000 mm
- Coating : HDG. Electro Galvanized and color furnace black
- Thread standard is DIN 40430
- Pipe manufactured according to the standard DIN 49020

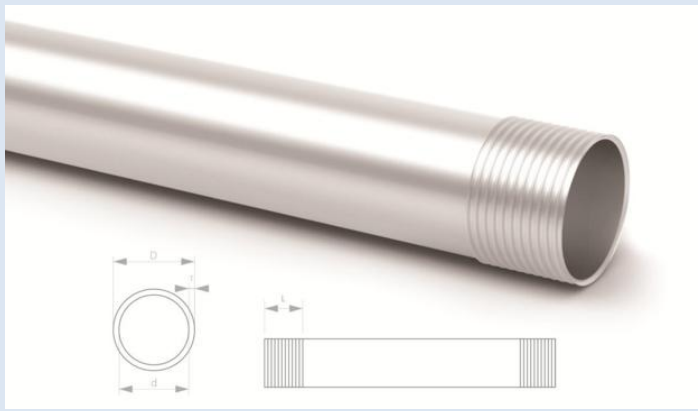


| Size (PG) | Outside Diameter (mm) | Inside Diameter (mm) | Thickness (mm) | Weight (kg/m) |
|-------------|-------------------------|------------------------|------------------|-----------------|
| 7 | 12 | 10 | 1 | 0.294 |
| 9 | 15 | 13 | 1 | 0.392 |
| 11 | 18 | 16 | 1 | 0.441 |
| 13.5 | 20 | 18 | 1 | 0.49 |
| 16 | 22 | 20 | 1 | 0.539 |
| 21 | 28 | 25.5 | 1.25 | 0.857 |
| 29 | 37 | 34 | 1.5 | 1.359 |
| 36 | 47 | 43.5 | 1.75 | 2.015 |
| 42 | 54 | 50 | 2 | 2.646 |
| 48 | 60 | 56 | 2 | 2.94 |

BS Conduit



- Pipe length is 3000 or 6000 mm
- Coating : HDG. Electro Galvanized and color furnace black
- Thread standard is BS /1387
- Pipe manufactured according to the standard BS /1387

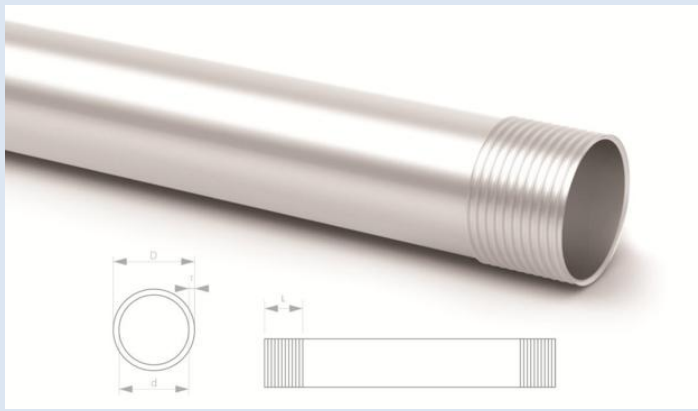


| Size (inch) | Outside Diameter (mm) | Inside Diameter (mm) | Thickness (mm) | Weight (kg/m) |
|---------------|-------------------------|------------------------|------------------|-----------------|
| ½' | 21.3 | 17.3 | 2 | 1.114 |
| ¾' | 26.9 | 22.9 | 2 | 1.407 |
| 1' | 33.7 | 28.7 | 2.5 | 2.204 |
| 1 ¼' | 42.4 | 37.4 | 2.5 | 2.773 |
| 1 ½' | 48.3 | 43.3 | 2.5 | 3.159 |
| 2' | 60.3 | 55.3 | 2.5 | 3.944 |
| 2 ½' | 76.1 | 71.1 | 2.5 | 4.978 |
| 3' | 88.9 | 82.9 | 3 | 6.978 |
| 4' | 114.3 | 107.3 | 3.5 | 10.467 |
| 5' | 139.7 | 130.7 | 4.5 | 16.449 |
| 6' | 165.1 | 155.1 | 5 | 21.6 |

ISO Conduit



- Pipe length is 3000 mm
- Coating : HDG. Electro Galvanized and color furnace black
- Thread standard is BS/4568
- Pipe manufactured according to the standard BS/4568



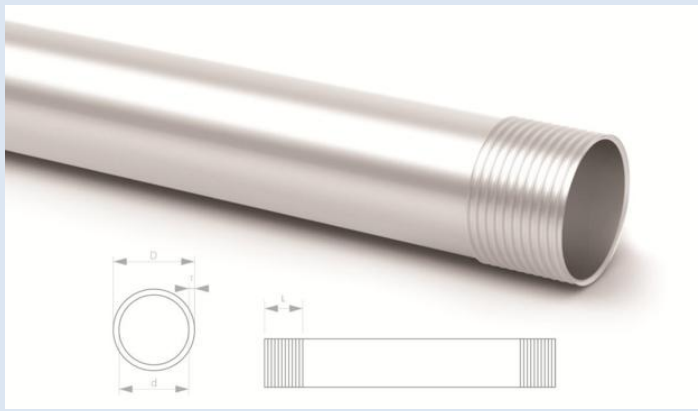
| Size (mm) | Outside Diameter (mm) | Inside Diameter (mm) | Thickness (mm) | Weight (kg/m) |
|-------------|-------------------------|------------------------|------------------|-----------------|
| 16 | 16 | 12 | 2 | 0.837 |
| 20 | 20 | 15 | 2.5 | 1.308 |
| 25 | 25 | 20 | 2.5 | 1.635 |
| 32 | 32 | 26 | 3 | 2.512 |
| 40 | 40 | 34 | 3 | 3.14 |
| 50 | 50 | 44 | 3 | 3.925 |
| 63 | 63 | 55 | 4 | 6.594 |
| 75 | 75 | 66 | 4.5 | 8.831 |
| 100 | 100 | 90 | 5 | 13.083 |
| 150 | 150 | 139 | 5.5 | 21.587 |

Heavy Series

ISO Conduit



- Pipe length is 3000 mm
- Coating : HDG. Electro Galvanized and color furnace black
- Thread standard is BS/4568
- Pipe manufactured according to the standard BS/4568



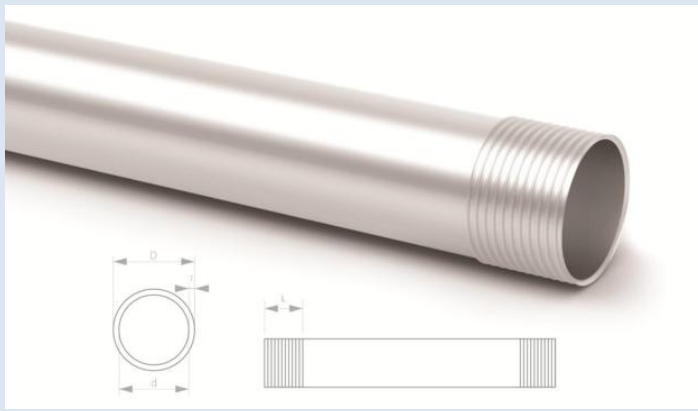
| Size (mm) | Outside Diameter (mm) | Inside Diameter (mm) | Thickness (mm) | Weight (kg/m) |
|-------------|-------------------------|------------------------|------------------|-----------------|
| 16 | 16 | 14 | 1 | 0.418 |
| 20 | 20 | 17 | 1.5 | 0.785 |
| 25 | 25 | 22 | 1.5 | 0.981 |
| 32 | 32 | 29 | 1.5 | 1.256 |
| 40 | 40 | 36 | 2 | 2.093 |
| 50 | 50 | 46 | 2 | 2.616 |
| 63 | 63 | 58 | 2.5 | 4.121 |
| 75 | 75 | 69 | 3 | 5.887 |
| 100 | 100 | 92 | 4 | 10.466 |
| 150 | 150 | 141 | 4.5 | 17.662 |

Medium Series

ISO Conduit



- Pipe length is 3000 mm
- Coating : HDG. Electro Galvanized and color furnace black
- Thread standard is BS/4568
- Pipe manufactured according to the standard BS/4568



| Size (mm) | Outside Diameter (mm) | Inside Diameter (mm) | Thickness (mm) | Weight (mm) |
|-------------|-------------------------|------------------------|------------------|---------------|
| 16 | 16 | 14 | 1 | 0.418 |
| 20 | 20 | 17.5 | 1.25 | 0.654 |
| 25 | 25 | 22.5 | 1.25 | 0.817 |
| 32 | 32 | 29.5 | 1.25 | 1.046 |
| 40 | 40 | 37 | 1.5 | 1.57 |
| 50 | 50 | 47 | 1.5 | 1.962 |
| 63 | 63 | 59 | 2 | 3.297 |
| 75 | 75 | 70 | 2.5 | 4.906 |
| 100 | 100 | 94 | 3 | 7.85 |
| 150 | 150 | 142 | 4 | 15.7 |

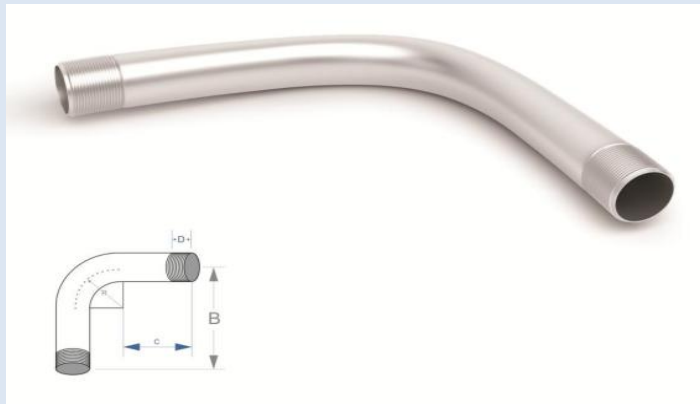
Light Series

Conduit Elbow



A conduit elbow allows you to make a turn in a conduit run so it is easier to place your wiring where you need it.

- Coating : HDG. Electro Galvanized and color furnace black
- standard is DIN 49020



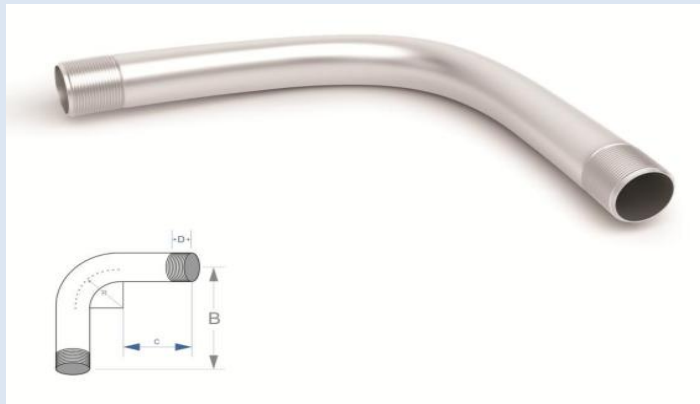
| Size (PG) | B (mm) | C (mm) | D (mm) | R (mm) | Thickness (mm) |
|-------------|----------|----------|----------|----------|------------------|
| 11 | - | - | - | - | - |
| 13.5 | 160 | 160 | 15 | 65 | 1 |
| 16 | 170 | 170 | 15 | 65 | 1 |
| 21 | 180 | 180 | 20 | 78 | 1 |
| 29 | 240 | 240 | 30 | 92 | 1.25 |
| 36 | 260 | 260 | 30 | 95 | 1.5 |
| 48 | 450 | 450 | 40 | 175 | 2 |

Conduit Elbow



A conduit elbow allows you to make a turn in a conduit run so it is easier to place your wiring where you need it.

- Coating : HDG. Electro Galvanized and color furnace black
- standard is DIV 1387



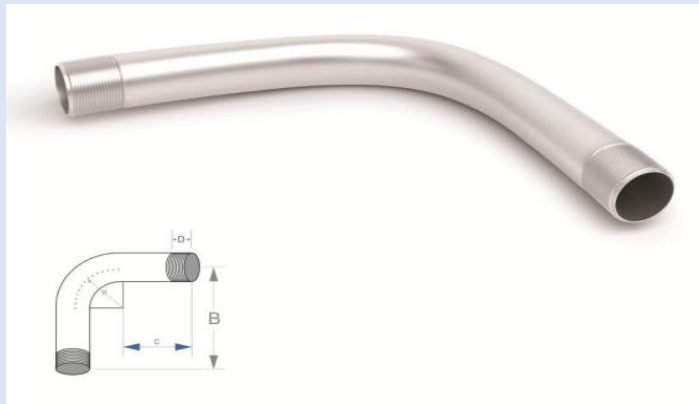
| Size (inch) | A (mm) | C (mm) | D (mm) | Length (mm) |
|---------------|----------|----------|----------|---------------|
| ½' | 100 | 85 | 15 | 320 |
| ¾' | 130 | 90 | 15 | 390 |
| 1' | 150 | 125 | 18 | 470 |
| 1 ¼' | 180 | 130 | 20 | 540 |
| 1 ½' | 200 | 160 | 22 | 620 |
| 2' | 250 | 180 | 20 | 680 |
| 2 ½' | 500 | 200 | 25 | 1200 |
| 3' | 600 | 300 | 32 | 1500 |
| 4' | 600 | 300 | 32 | 1500 |
| 5' | 800 | 300 | 38 | 2000 |
| 6' | 800 | 300 | 38 | 2000 |

Conduit Elbow



A conduit elbow allows you to make a turn in a conduit run so it is easier to place your wiring where you need it.

- Coating : HDG. Electro Galvanized and color furnace black
- standard is BS /4568



| Size (mm) | R (mm) | C (mm) | D (mm) | Length (mm) |
|-------------|----------|----------|----------|---------------|
| 20 | 100 | 85 | 15 | 320 |
| 25 | 130 | 90 | 15 | 390 |
| 32 | 150 | 125 | 18 | 460 |
| 40 | 180 | 130 | 20 | 530 |
| 50 | 200 | 160 | 22 | 600 |
| 63 | 250 | 180 | 22 | 680 |
| 75 | 500 | 300 | 32 | 1200 |
| 100 | 600 | 300 | 32 | 1500 |

PG Coupling



Coupling joins materials of the same type together to form a longer straight line of conduit.

- Coating : HDG. Electro Galvanized and color furnace black
- Thread standard is DIN 40430



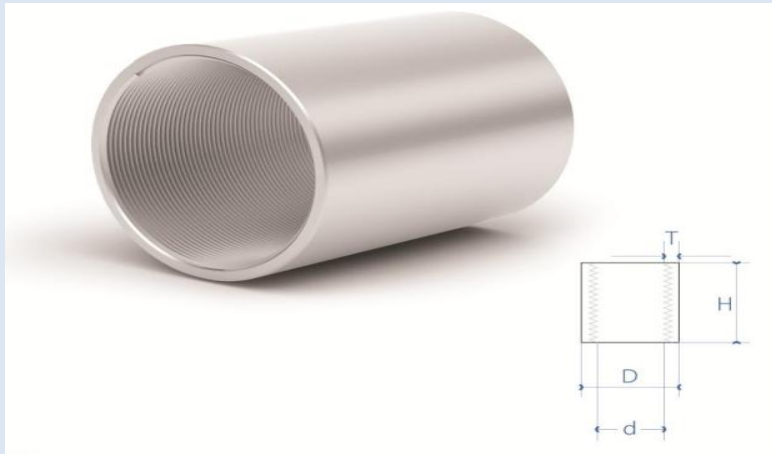
| Size (PG) | H (mm) | D (mm) | Thickness (mm) |
|-------------|----------|----------|------------------|
| 11 | 33 | 21 | 1.5 |
| 13.5 | 33 | 23 | 1.5 |
| 16 | 33 | 25 | 1.5 |
| 21 | 35 | 31 | 1.5 |
| 29 | 40 | 40 | 1.5 |
| 36 | 50 | 50 | 1.5 |
| 48 | 60 | 63 | 2 |

Iso Coupling



Coupling joins materials of the same type together to form a longer straight line of conduit.

- Coating : HDG. Electro Galvanized and color furnace black
- Thread standard is BS 4568



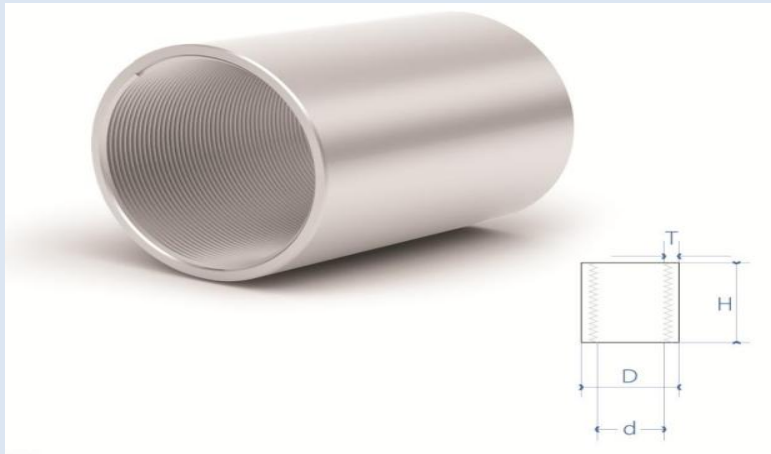
| Size (mm) | H (mm) | D (mm) | Thickness (mm) |
|-------------|----------|----------|------------------|
| M20 | 33 | 23.5 | 2.5 |
| M25 | 33 | 28 | 2.5 |
| M32 | 33 | 36 | 2.5 |
| M40 | 35 | 46 | 3.5 |
| M50 | 40 | 55 | 3.5 |
| M63 | 50 | 70 | 4 |
| M75 | 60 | 82 | 4 |

B.S Coupling



Coupling joins materials of the same type together to form a longer straight line of conduit.

- Coating : HDG. Electro Galvanized and color furnace black
- Thread standard is BS 1387



| Size (inch) | H (mm) | D (mm) | Thickness (mm) |
|------------------|-------------|-------------|---------------------|
| 1/2' | 34 | 25 | 2.5 |
| 3/4' | 35 | 32 | 2.5 |
| 1' | 42 | 34 | 2.5 |
| 1 1/4' | 45 | 48 | 4 |
| 1 1/2' | 50 | 53 | 4 |
| 2' | 60 | 66 | 4 |
| 2 1/2' | 65 | 82 | 4 |
| 3' | 80 | 95 | 4 |
| 4' | 100 | 120 | 4 |

Head Bushing



Head Bushing can be installed on conduits exit to prevent cable damage.

- Coating : HDG. Electro Galvanized and color furnace black
- Thread Standard: DIN 40430



| Size (PG) | W (mm) | d (mm) | H (mm) |
|----------------|-------------|-------------|-------------|
| 11 | 22 | 16 | 10 |
| 13.5 | 27 | 18 | 10 |
| 16 | 27 | 16 | 10 |
| 21 | 32 | 21 | 11 |
| 29 | 42 | 34.5 | 14 |
| 36 | 45 | 38 | 14 |
| 48 | 65 | 52 | 16 |

Head Bushing



Head Bushing can be installed on conduits exit to prevent cable damage.

- Coating : HDG. Electro Galvanized and color furnace black
- Thread Standard: BS 4568



| Size (mm) | H (mm) | d (mm) | H (mm) |
|----------------|-------------|-------------|-------------|
| M20 | 27 | 17.5 | 10 |
| M25 | 32 | 22.5 | 11 |
| M32 | 40 | 29.5 | 13 |
| M40 | 48 | 37.5 | 14 |
| M50 | 54 | 47.5 | 15 |
| M63 | 65 | 60 | 16 |

Head Bushing



Head Bushing can be installed on conduits exit to prevent cable damage.

- Coating : HDG. Electro Galvanized and color furnace black
- Thread Standard: BS 1387



| Size (inch) | H (mm) | d (mm) | H (mm) |
|-------------|----------|----------|----------|
| ½' | 27 | 17.4 | 10 |
| ¾' | 32 | 22 | 11 |
| 1' | 40 | 29.4 | 13 |
| 1 ¼' | 48 | 38.4 | 14 |
| 1 ½' | 54 | 44.3 | 15 |
| 2' | 65 | 51.2 | 16 |
| 2 ½' | 80 | 70.9 | 16 |
| 3' | 98 | 82.5 | 21 |

Saddle



- Coating : HDG. Electro Galvanized and color furnace black



| Size (inch) | Inside Dia. Of thread (mm) | Outside Dia. Of thread (mm) | Length Of Thread (mm) | Inside Dia. Of Tube Place (mm) |
|---------------|------------------------------|-------------------------------|-------------------------|----------------------------------|
| ½' | 73 | 20 | 25 | 50 |
| ¾' | 82 | 20 | 29 | 58 |
| 1' | 86 | 20 | 35 | 64 |
| 1 ¼' | 93 | 20 | 42 | 66 |
| 1 ½' | 100 | 20 | 52 | 76 |
| 2' | 113 | 20 | 61 | 86 |
| 2 ½' | 130 | 24 | 77 | 108 |
| 3' | 147 | 24 | 91 | 120 |
| 4' | 168 | 24 | 112 | 140 |
| 5' | 224 | 34 | 155 | 194 |
| 6' | 253 | 34 | 183 | 218 |

Unistrut Channel



- Coating: HDG. ASTM A123

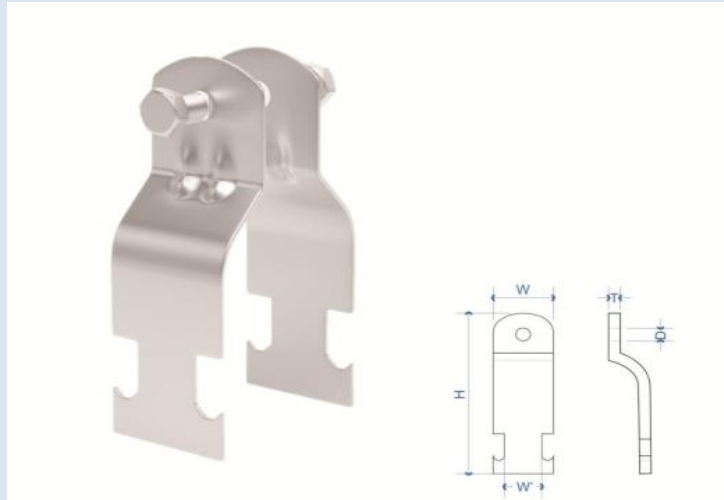


| W (mm) | H (mm) | d (mm) | T (mm) | L (mm) |
|-------------|-------------|-------------|-------------|-------------|
| 41 | 41 | 17 | 2-3 | 2000-3000 |
| 40 | 30 | 20 | 2-3 | 2000-3000 |

Unistrut Clamp



- Pipe length is 2000 or 3000 mm
- Coating: HDG. Electro Galvanized
- Material: Steel

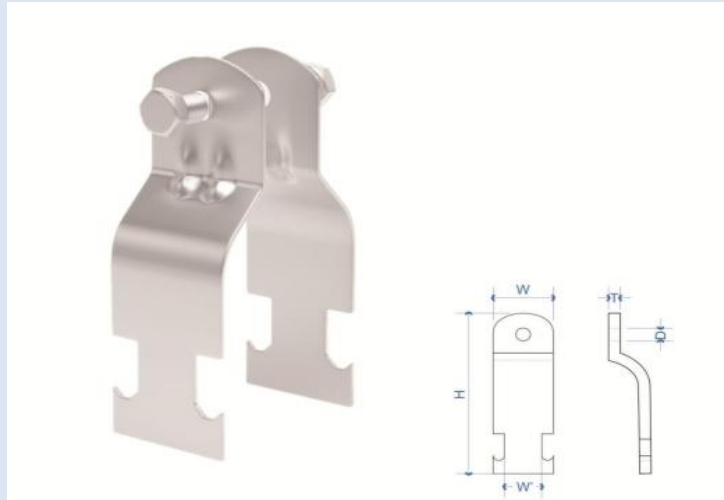


| Size (mm) | W (mm) | H (mm) | W' (mm) | T (mm) |
|----------------|-------------|-------------|--------------|-------------|
| 20 | 35 | 63 | 22 | 2 |
| 25 | 35 | 70 | 22 | 2 |
| 32 | 35 | 80 | 22 | 2 |
| 50 | 35 | 90 | 22 | 2 |
| 63 | 35 | 95 | 22 | 2 |

Unistrut Clamp



- Coating: HDG. ASTM A123

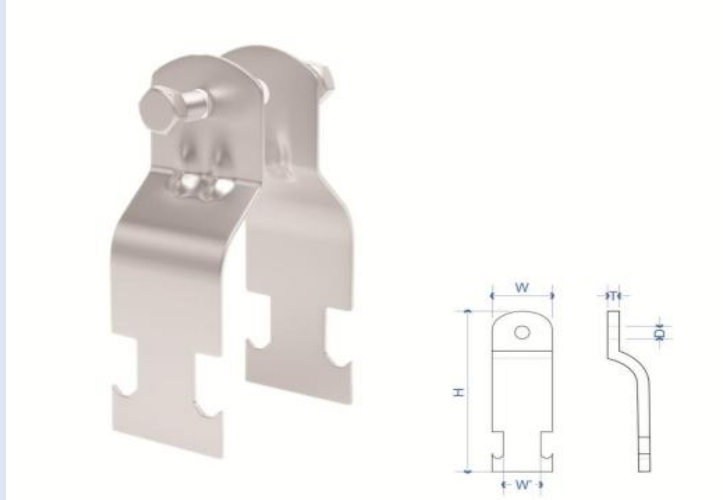


| Size (PG) | W (mm) | H (mm) | W' (mm) | T (mm) |
|----------------|-------------|-------------|--------------|-------------|
| 13.5 | 35 | 63 | 22 | 2 |
| 16 | 35 | 63 | 22 | 2 |
| 21 | 35 | 70 | 22 | 2 |
| 29 | 35 | 80 | 22 | 2 |
| 36 | 35 | 90 | 22 | 2 |
| 48 | 35 | 95 | 22 | 2 |

Unistrut Clamp

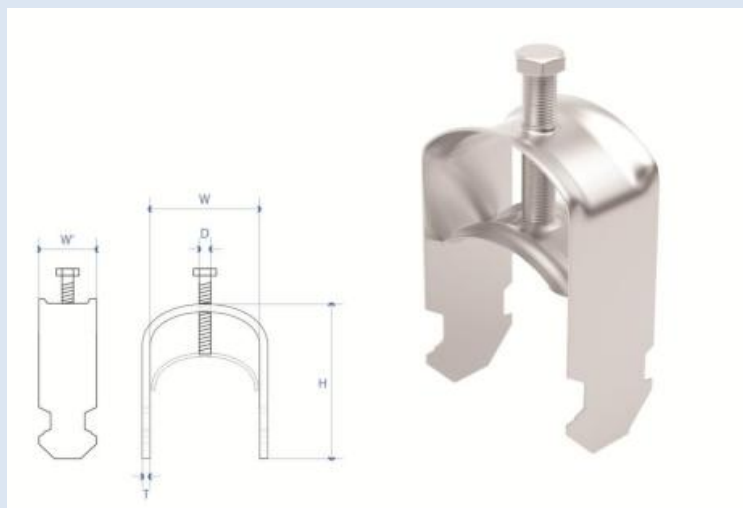


- Coating: HDG. ASTM A123



| Size (inch) | W (mm) | H (mm) | W' (mm) | T (mm) |
|------------------|-------------|-------------|--------------|-------------|
| 1/2' | 35 | 63 | 22 | 2 |
| 3/4' | 35 | 70 | 22 | 2 |
| 1' | 35 | 80 | 22 | 2 |
| 1 1/2' | 35 | 90 | 22 | 2 |
| 2' | 35 | 95 | 22 | 2 |

Fork Clamp



| Size | Height (mm) | Width (mm) | Outside (mm) | Thickness (mm) |
|-------|------------------|-----------------|-------------------|---------------------|
| 8-12 | 34 | 14 | 6 | 2 |
| 12-16 | 35 | 18 | 6 | 2 |
| 16-20 | 44 | 22 | 6 | 2 |
| 20-24 | 49 | 26 | 6 | 2 |
| 24-28 | 57 | 30 | 6 | 2 |
| 28-32 | 63 | 34 | 6 | 2 |
| 32-36 | 65 | 38 | 6 | 2 |
| 36-40 | 70 | 42 | 6 | 2 |
| 40-44 | 73 | 46 | 6 | 2 |
| 44-48 | 75 | 50 | 6 | 2 |
| 48-52 | 80 | 54 | 6 | 2 |

Flexible Metal Conduit

Flexible conduit offers a high degree of flexibility and impact strength and is one of the best ways to keep your cables safe and organized.



| Size | | | In side Dia | Out side Dia of thread (mm) | Length of thread (mm) | Length of thread (mm) |
|------|--------|----|-------------|-------------------------------|-------------------------|-------------------------|
| 11 | 5/16" | 12 | 11*15.5 | 43 | 0.13 | 25 |
| 13 | 3/8" | 16 | 13*17.5 | 50 | 0.16 | 25 |
| 16 | 1/2" | 20 | 16*20.6 | 60 | 0.20 | 25 |
| 21 | 3/4" | 25 | 20*25.6 | 70 | 0.30 | 25 |
| 25 | 1" | - | 26*31.4 | 80 | 0.39 | 25 |
| 29 | - | 32 | 29*35 | 95 | 0.44 | 25 |
| 36 | 1 1/4" | 40 | 36*43.8 | 115 | 0.72 | 25 |
| 42 | 1 1/2" | - | 42*50 | 130 | 0.82 | 25 |
| 48 | 2" | 50 | 48*56 | 140 | 0.93 | 25 |
| 52 | 2" | - | 52*60 | 165 | 1 | 10 |
| 63 | 2 1/2" | 63 | 62*70 | 190 | 1.4 | 10 |
| 75 | 3" | 75 | 76*85 | 230 | 1.77 | 10 |
| 80 | 3" | - | 80*90 | 245 | 1.87 | 5 |

Junction Box



Junction boxes are metal or plastic enclosures used as housing for wiring connections. The connections within are called branch circuits and usually represent the end of a conduit. Junction boxes also protect wiring from the elements or environment, which can sometimes be corrosive or otherwise harmful to wiring material. Finally, junction boxes protect wiring from unwanted tampering, weather malicious or unintentional



U Bolt

| Size (inch) | Width (mm) | Height 1 (mm) | Height 2 (mm) | Thickness (mm) | Diameter (mm) |
|---------------|--------------|-----------------|-----------------|------------------|-----------------|
| ½" | 28 | 49 | 25 | M 6 | 23.7 |
| ¾" | 33 | 54 | 25 | M 6 | 28.4 |
| 1" | 40 | 61 | 25 | M 6 | 34.4 |
| 1 ¼" | 49 | 70 | 25 | M 6 | 45 |
| 1 ½" | 55 | 82 | 30 | M 6 | 52 |
| 2" | 66 | 94 | 30 | M 8 | 62.5 |
| 2 ½" | 85 | 109 | 30 | M 8 | 75 |
| 3" | 97 | 130 | 30 | M 8 | 90 |
| 4" | 123 | 148 | 30 | M 8 | 115 |



Trefoil



| Diameter (mm) | Height (mm) | Length (mm) | Width (mm) |
|-----------------|---------------|---------------|--------------|
| 28-32 | 102 | 114 | 38 |
| 38-42 | 120 | 122 | 38 |
| 41-45 | 122 | 122 | 38 |
| 50-53 | 144 | 151 | 44 |
| 67-72 | 175 | 180 | 36 |

Condulet



The most basic application for condulets is to connect various straight conduit sections of the electrical raceway



Flexible Gland



Flexible Gland



Armoured Cable Gland



Flexible Gland



Cable Gland Reducer

Flexible Connector



Flexible Elbow Connector



Flexible Connector-Female



Flexible Connector-male

Other Accessories



Cable Lug



Coupling Ridge



Cable Connector



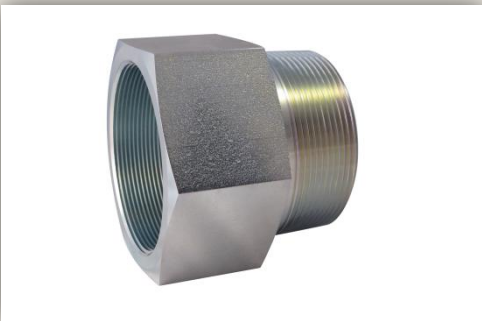
Nipple (male-male)



Cap/Plug



Cap/Plug



Adaptor



Union Female-Male

Other Accessories



Pipe Strap/Clamp



Pipe Strap/Clamp



Locknut




Spring nut



Earth Tag



Polypropylene Head bushing



Dimension

H: Height

L: Length

Th: Thickness

D: Diameter

W: Weight

Materials

1. Aluminum
2. Carbon Steel
3. Stainless steel

Coating

1. Hot Dip Galvanized Zinc After fabrication

Specifying hot-dip galvanizing is simply done by using ASTM specifications developed to produce high-quality galvanized coatings. The main specifications that pertain to hot-dip galvanizing are:

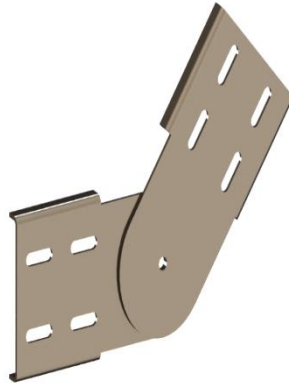
- ASTM A123 - general iron and steel products

5

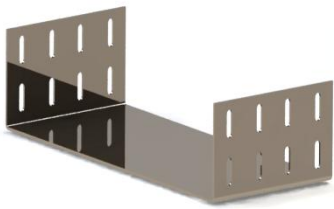


Installation Tool

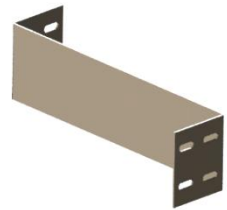
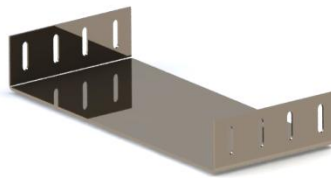
These are fitting that are used to join two sections of cable trays or cable ladders to each other.



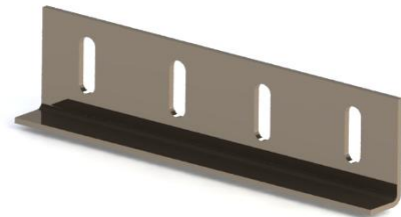
Adjustable Vertical Splice Plate



"U" Type Splice Plate

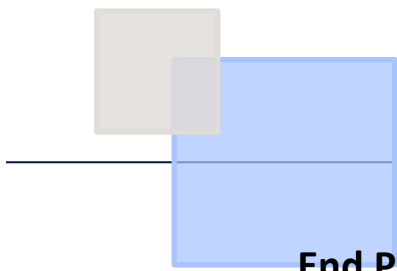


Z-shaped Converter



Straight Splice Plate

| Length | Height | Thickness |
|----------------------|----------------------|----------------------|
| $50 \leq L \leq 200$ | $50 \leq H \leq 100$ | $1.5 \leq TH \leq 3$ |

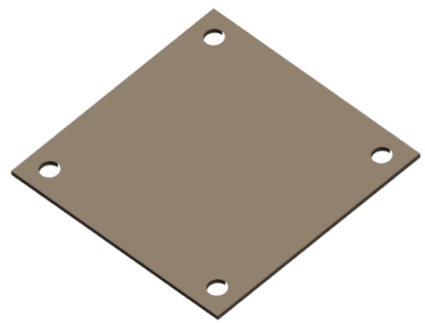


End Plate & Fish Plate



End Plate

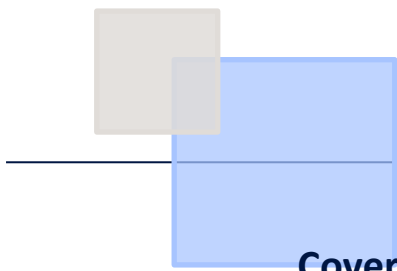
It is a fitting that is fixed to the end of the cable tray or ladder to lock it giving a neater appearance.



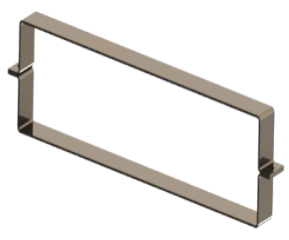
Fish Plate

It is a fitting that is used for extra strength when joining cable tray sections and also can protect cables from cut edges.

| Width | Height | Thickness |
|-----------------------|----------------------|----------------------|
| $50 \leq W \leq 1000$ | $50 \leq H \leq 150$ | $1.5 \leq TH \leq 3$ |



Cover Clamp, Hold Down Clamp & Divider



Loop



U Type



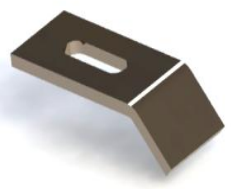
Strip Type



Clips type

Hold down Clamp

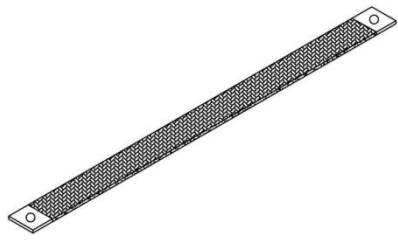
A hold-down or toggling clamp is a piece of equipment that is often used to hold items together or to keep them stable by exerting set pressure.



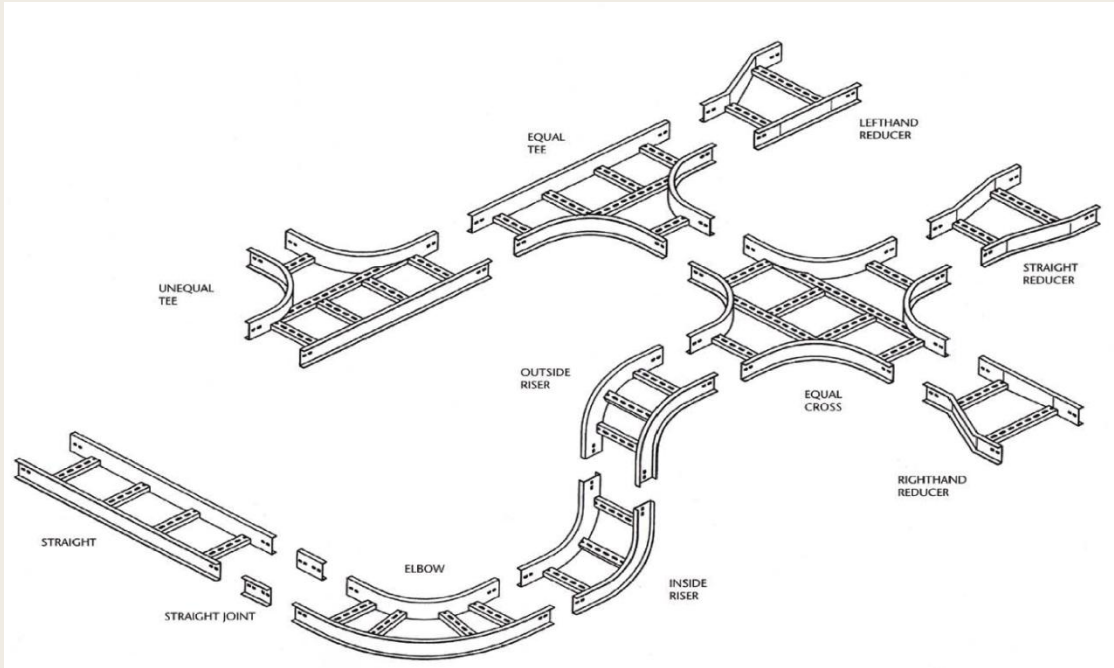
Divider



Flexible copper bonding




Cable Tray & Ladder System Overview



The safety service record of cable tray wiring systems in industrial facilities has been significantly better than those of conduit wiring systems. There have been industrial fires and explosions that have occurred as a direct result of the wiring system being a conduit wiring system. In these cases, cable tray wiring systems would not have provided the fires and explosions that the conduit systems did by providing an explosion gas flow path to the ignition source even though the conduit systems contained seals.

The most significant part of this section is that the metallic cable tray system must have electrical continuity over its entire length and that the support for the cables must be maintained. These requirements can be adequately met even though there will be installation conditions where the cable tray is mechanically discontinuous, such as at a firewall penetration, at an expansion gap in a long straight cable tray run, where there is a change in elevation of a few feet between two horizontal cable tray sections of the same run, or where the cables drop from an overhead cable tray to enter equipment. In all these cases, adequate bonding jumpers must be used to bridge the mechanical discontinuity.



Dimension

H: Height

L: Length

Th: Thickness

D: Diameter

W: Weight

Materials

1. Aluminum
2. Carbon Steel
3. Stainless steel

Coating

1. Hot Dip Galvanized Zinc After fabrication

Specifying hot-dip galvanizing is simply done by using ASTM specifications developed to produce high-quality galvanized coatings. The main specifications that pertain to hot-dip galvanizing are:

- ASTM A123 - general iron and steel products

IRAN WINCH



Email: info@iranwinch.com

Telephone: 021-88881963-64

Fax: 021-88881965

Address: No.11, Sattari Ave, Nelson Mandela
Exp. Way, Tehran, Iran an