



**AZARAKHSH POWER.
GENERATION COMPANY**

**ALI-ABAD B.O.O.
GAS TURBINE POWER PLANT**

KKS CODE	EQUIPMENT	SUPPLIER	CODE
MBN12AA001	START-UP VALVE	ALLWEILER	DVIM47F-W432
MBN12AA001A	SOLENOID VALVE	COAX-MUELLER	MK 15-NC
MBN12AA052	CHECK VALVE	PARKER	RHZ10 PSR ED
MBN12AA103	CONTROL VALVE	PHÖNIX	TYPE 506



ALLWEILER AG

Data sheet

Page 1 of 1

Item

10 2 x Pressure Relief Valve DVIM 47 F 100 bar Ten

Equipment no. 7055120, 7055121

Operating conditions of pump VHF 660 R44

Liquid:	Fuel Oil			Delivery flow:	1.127,3	l / min
Pumping temp.:	53	degr. C		Speed:	2970	min ⁻¹
Viscosity:	2,1	mm ² / s		Power absorbed:	172,2	kW
Inlet pressure:	2,5	Bar		Motor power req.:		kW
Outlet pressure:	80	Bar				
Different. pressure:	77,5	Bar				
NPSH-required:		MWS *)				
Inspection:	Shoptest certificated acc. to DIN 55350/4.2.2.					
Delivery guarantee:	Acc. to VDMA 24284 cl. II gr. II					

Design of Pressure Relief Valve DVIM 47 F

Inl. branch width:	DN 65	Class:	PN 100	Outl. branch width:	DN 80	Class	PN 16
Position:	axial			Position:	side		RF
machined acc. to:	DIN EN standard			machined acc. to:	DIN EN standard		
acc. to Drawing no.	690 0089 671						

Pressures

Set pressure	79 bar
Short-Circuit pressure	About 83 bar
Closing pressure	About 78 bar

Materials

Casing parts:	Welded Steel	Valve cone:	16 MnCrS5
Valve seat bush:	16 MnCrS5	Bush for pilot piston:	16 MnCrS5



MAPNA'S DOC. NO.:
TSM/AA-00/TG-B-38-TGD-369

REV.: 0

FILE NO.:

CONTRACT NO.:

TUGA. NO.: AA-OM-01-9A902-A-369

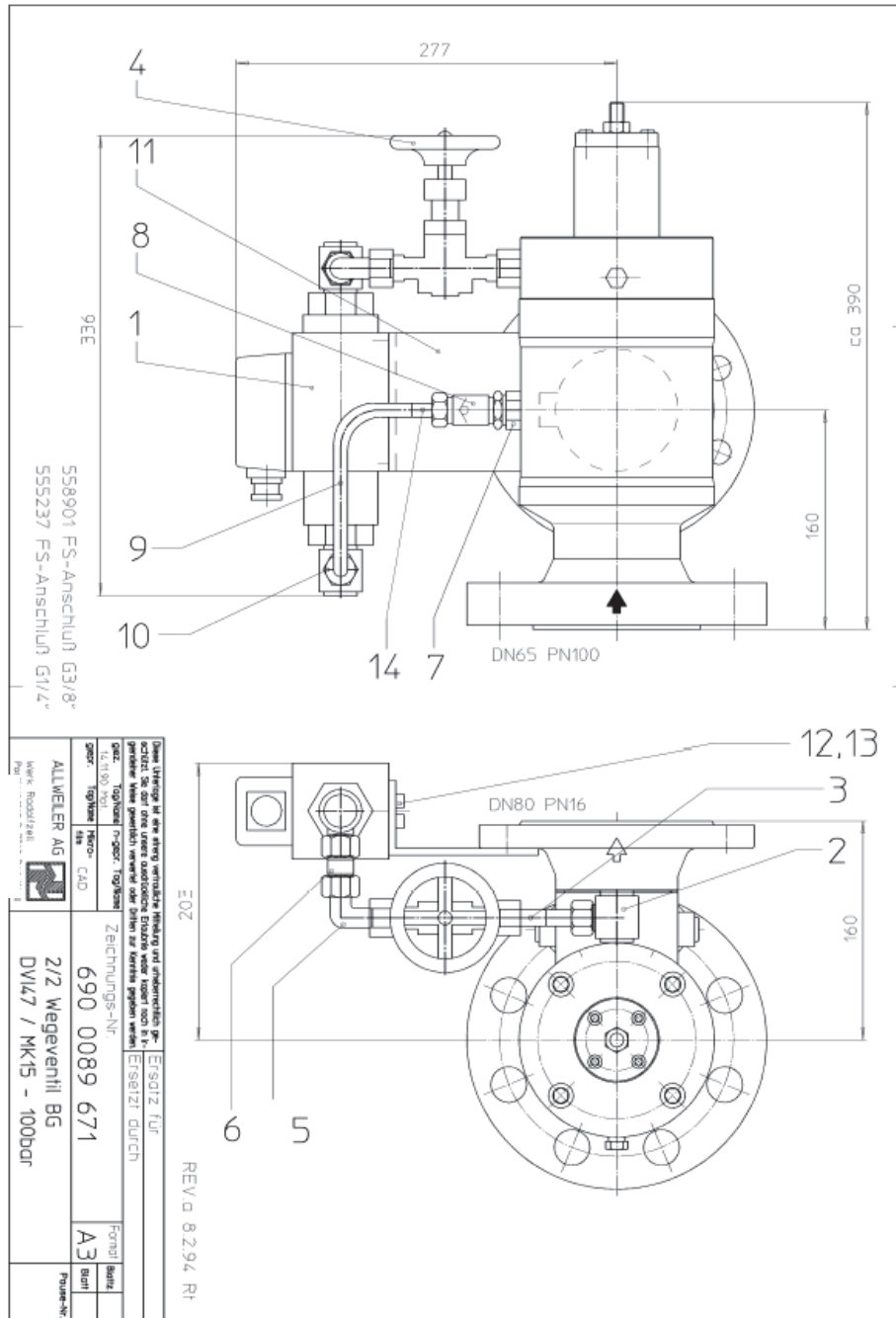
DESIGN STAGE:

Page 131 of 178



AZARAKHSH POWER. GENERATION COMPANY

ALI-ABAD B.O.O. GAS TURBINE POWER PLANT



MAPNA'S DOC. NO.:
TSM/AA-00/TG-B-38-TGD-369

REV.: 0

FILE NO.:

CONTRACT NO.:

TUGA. NO.: AA-OM-01-9A902-A-369

DESIGN STAGE:

Page 132 of 178



AZARAKHSH POWER. GENERATION COMPANY

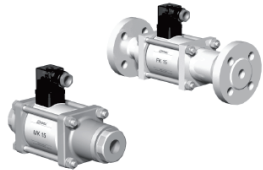
ALI-ABAD B.O.O. GAS TURBINE POWER PLANT

Item 2 Solenoid valve
 Manufacturer Müller
 Type MK 15 - NC
 Power 48 W
 Voltage 220 / 240 V AC
 Protection type IP 65
 Deenergized valve position closed

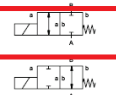
www.co-ax.com **COAX**® data sheet L3.06-01/2008

coaxial valve

type **MK 15**
FK 15



2/2 way valve direct acting
pressure range PN 0-100 bar
orifice DN 15 mm
connection thread/flange
function valve normally closed symbol **NC**
 valve normally open symbol **NO**



design pressure balanced, with spring return
body materials ① brass ② steel, galvanized
 ③ brass, nickel plated ⑤ without non-ferr. metals
 ④ steel, nickel plated ⑥ stainless steel
valve seat synthetic resin on metal
seal materials NBR PTFE, FPM, CR, EPDM

details needed

- orifice
- port
- function N/CNO
- operating pressure
- flow rate
- media
- media temperature
- ambient temperature
- nominal voltage

general specifications

ports	MK threads G 3/8 - G 3/4	special threads
FK	flanges PN 16/40/100	special flanges
function	NC	NO
pressure range	bar 0-16/0-40/0-64/0-100	> 100 bar upon request
Kv value	m ³ /h 4,8	
vacuum	leak rate	≤ 10 ⁻⁴ mbar·h ⁻¹
pressure-vacuum	P ₁ ≤ P ₂	upon request
back pressure	P ₂ > P ₁	available (max. 16 bar)
media	gaseous - liquid - highly viscous - gelatinous - contaminated	upon request
abrasive media		upon request
damping	opening	available
	closing	available
flow direction	A = B as marked	bi-directional (max. 16 bar)
switching cycles	I/min 200	
switching time	ms opening 80 closing 80	
media temperature	°C DC: -40 to +100	-40 to +160
	AC: -40 to +100	-40 to +160
ambient temperature	°C DC: -40 to +80	
	AC: -40 to +80	
limit switches		inductive/mech. (depend. on temperature)
manual override		available
approvals		LR/GL/WAZ
mounting		mounting brackets
weight	kg MK 3,8 FK 5,0	
additional equipment		upon request

electrical specifications

nominal voltage	U _n 24 V DC	special voltage upon request
	230 V 40-60 Hz AC	special voltage upon request
actuation	DC direct-current magnet	
	AC direct-current magnet with integrated rectifier	above 100°C with separate rectifier
insulation rating	H 180°C	
protection	IP65	
energized duty rating	ED 100%	
connection	plug acc. DIN EN 175301-803 form A, 4 positions x 90° / wire diameter 0-8 mm	terminal box M16x1,5
optional	M12x1 connector acc. DES/INA	connector acc. VDMA
additional equipment	illuminated plug with vibrator	
current consumption	N-coil 24 V DC 1,60 A	
	230 V 40-60 Hz AC 0,15 A	
H-coil		24 V DC 2,30 A
		230 V 40-60 Hz AC 0,24 A
explosion proof		
limit switches	inductive (I)	normally open-PNP
	inductive (B)	normally open-PNP
	mechanical	single pole double throw-SPDT

■ specifications not highlighted are standard
 ■ specifications highlighted in grey are optional



MAPNA'S DOC. NO.:
TSM/AA-00/TG-B-38-TGD-369

REV.: 0

FILE NO.:

CONTRACT NO.:

TUGA. NO.: AA-OM-01-9A902-A-369

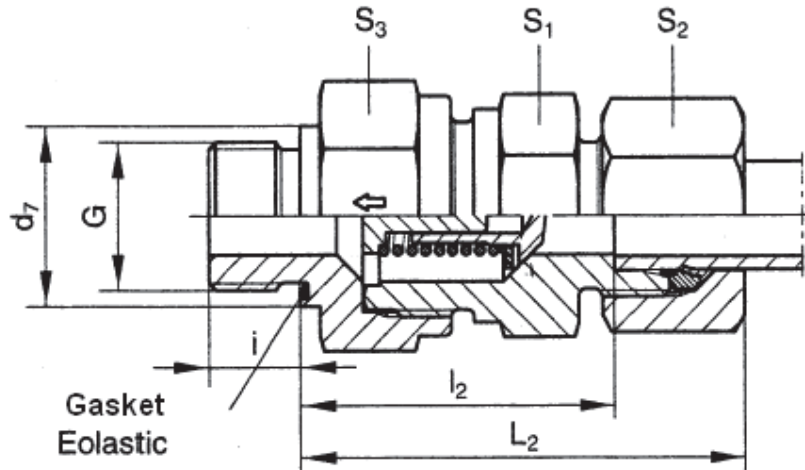
DESIGN STAGE:

Page 133 of 178



**AZARAKHSH POWER.
GENERATION COMPANY**

**ALI-ABAD B.O.O.
GAS TURBINE POWER PLANT**



Manufacturer	Code	Pipe Øe	Thread	PN	P _{max}	S ₁	S ₂	S ₃	L ₂	l ₂	i	D ₇	DN	Øi	Weight
PARKER	RHZ10 PSR ED	10 mm	G 3/8" A	400	500	22	22	24	54	38	12	22	6	5,5	161 g



MAPNA'S DOC. NO.:
TSM/AA-00/TG-B-38-TGD-369

REV.: 0

FILE NO.:

CONTRACT NO.:

TUGA. NO.: AA-OM-01-9A902-A-369

DESIGN STAGE:

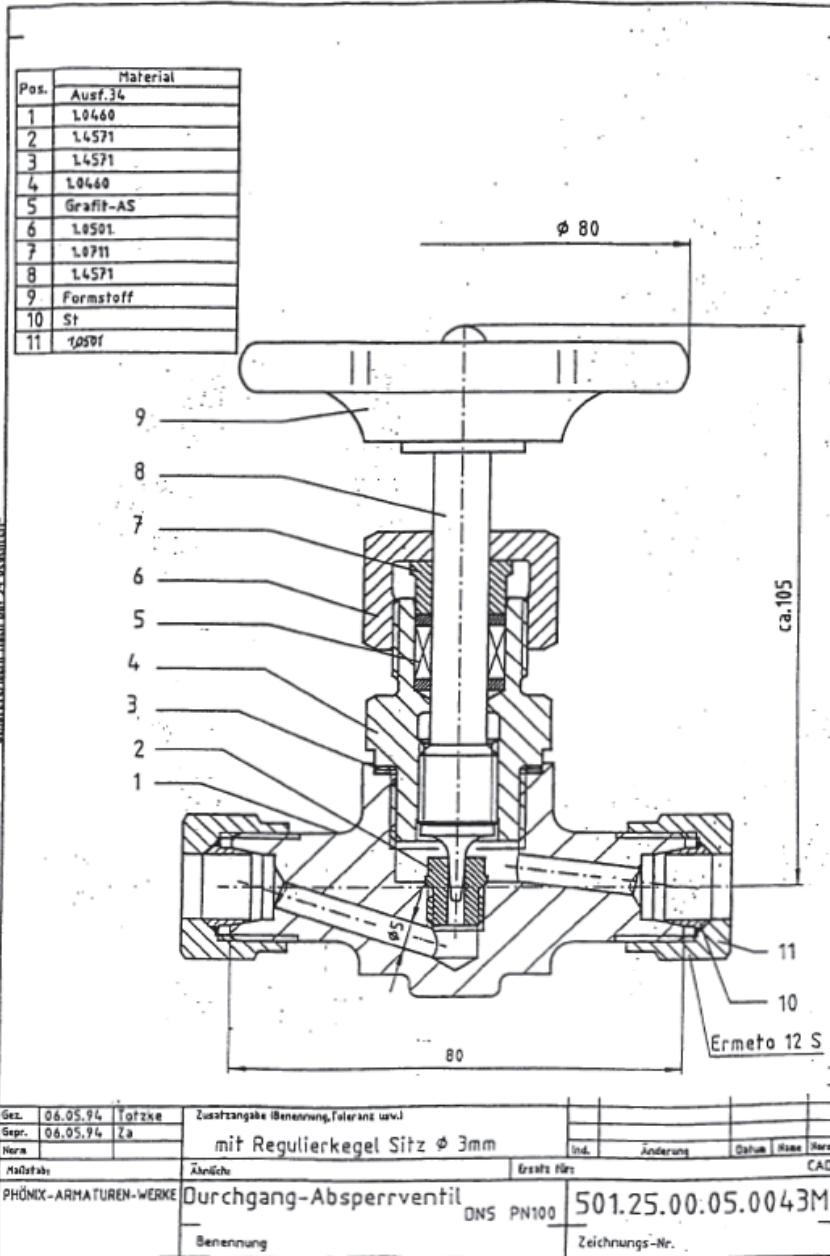
Page 134 of 178



AZARAKHSH POWER. GENERATION COMPANY

ALI-ABAD B.O.O. GAS TURBINE POWER PLANT

Item 3	Control valve	
	Manufacturer	Phönix Armaturenwerke
	Rated pressure	PN 100
	Nominal diameter	DN 5



MAPNA'S DOC. NO.:
TSM/AA-00/TG-B-38-TGD-369

REV.: 0

FILE NO.:

CONTRACT NO.:

TUGA. NO.: AA-OM-01-9A902-A-369

DESIGN STAGE:

Page 135 of 178